

[KD Validated] Anti-CAMK4 Rabbit mAb

Purified Recombinant Rabbit Monoclonal Antibody

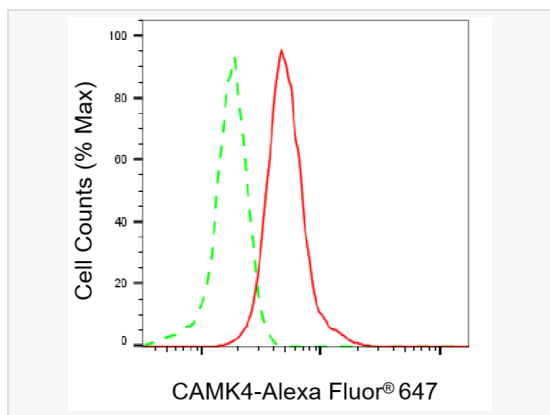
Catalog # R021198

Product Information

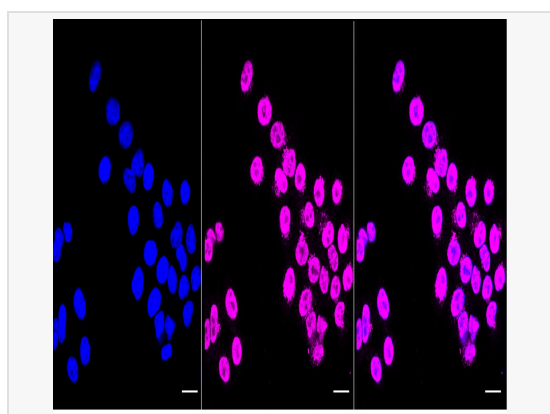
Application	WB, FC, IF (Cell)/ICC
Reactivity	Human, Mouse
Dilution	WB 1:1,000~1:5,000; FC 1:200~1:2,000; IF 1:100~1:1,000
Host	Rabbit
Clonality	Monoclonal
Clone No.	42M18T06
Isotype	IgG
Label	Unconjugated
Immunogen	A synthesized peptide derived from human CAMKIV
Format	Affinity purified monoclonal antibody supplied in PBS with 0.02% sodium azide and 50% glycerol, pH 7.3.
Storage	Shipped on wet ice. Store at -20°C. Stable for 12 months from date of receipt. Aliquoting is unnecessary for -20°C storage.
Precautions	[KD Validated] Anti-CAMK4 Rabbit mAb [42M18T06] is for research use only and not for use in diagnostic or therapeutic procedures.

Protein Information

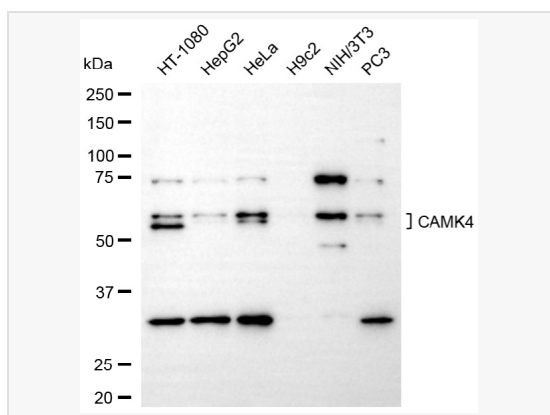
Synonyms	CAMK4; Calcium/Calmodulin Dependent Protein Kinase IV; CaMK-GR; CaMKIV; Calcium/Calmodulin-Dependent Protein Kinase Type IV Catalytic Chain; Brain Ca ⁺⁺ -Calmodulin-Dependent Protein Kinase Type IV; Calcium/Calmodulin-Dependent Protein Kinase Type IV; CAM Kinase- GR; CAM Kinase IV; CaMK IV; Brain Ca(2+)-Calmodulin-Dependent Protein Kinase Type IV; CaM Kinase-GR; EC 2.7.11.17; EC 2.7.11; CAMK-GR; CAMKIV; CaMK; CAMK.
Calculated MW	Calculated MW: 52 kDa; Observed MW: 52,58 kDa
Uniprot ID	Q16566
Gene ID	814
Background	Calcium/calmodulin-dependent protein kinase belonging to a proposed calcium-triggered signaling cascade. May be involved in transcriptional regulation. May be involved in regulation of microtubule dynamics. In vitro, phosphorylates CREB1, CREBBP, PRM2, MEF2A, MEF2D and STMN1/OP18.



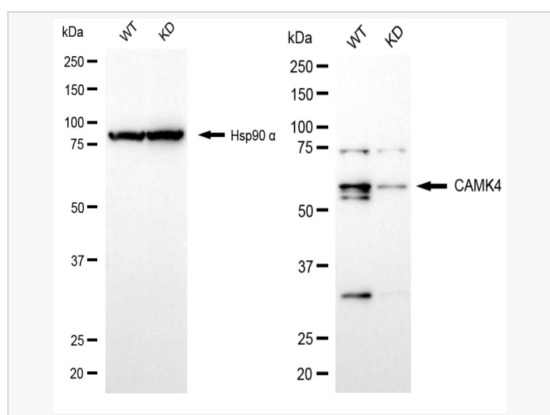
Flow cytometric analysis of CAMK4 expression in HepG2 cells using CAMK4 antibody (R021198, 1:2,000). Green, isotype control; red, CAMK4.



Immunocytochemical staining of HepG2 cells with CAMK4 antibody (R021198, 1:1,000). Nuclei were stained blue with DAPI; CAMK4 was stained magenta with Alexa Fluor® 647. Images were taken using Leica stellaris 5. Protein abundance based on laser Intensity and smart gain: High. Scale bar, 20 µm.



Western blotting analysis using CAMK4 antibody (R021198). Total cell lysates (30 µg) from various cell lines were loaded and separated by SDS-PAGE. The blot was incubated with CAMK4 antibody (R021198, 1:5,000) and HRP-conjugated goat anti-rabbit secondary antibody (1:20,000) respectively. Image was developed using ECL Substrate Kit.



Western blotting analysis using CAMK4 antibody (R021198). CAMK4 expression in wild-type (WT) and CAMK4 knockdown (KD) HT-1080 cells with 20 µg of total cell lysates. Hsp90 α serves as a loading control. The blot was incubated with CAMK4 antibody (R021198, 1:5,000) and HRP-conjugated goat anti-rabbit secondary antibody (1:20,000) respectively. Image was developed using ECL Substrate Kit.