

## [KD Validated] Anti-CTBP2 Rabbit mAb

Purified Recombinant Rabbit Monoclonal Antibody

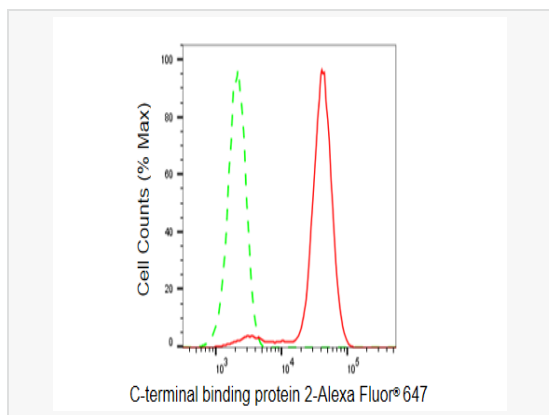
Catalog # R021195

### Product Information

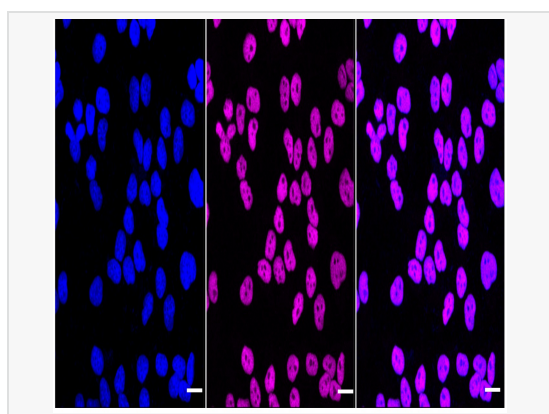
Application	WB, FC, IF (Cell)/ICC
Reactivity	Human, Mouse, Rat
Dilution	WB 1:1,000~1:5,000; FC 1:200~1:2,000; IF 1:100~1:1,000
Host	Rabbit
Clonality	Monoclonal
Clone No.	64H74R66
Isotype	IgG
Label	Unconjugated
Immunogen	A synthesized peptide derived from human CTBP2
Format	Affinity purified monoclonal antibody supplied in PBS with 0.02% sodium azide and 50% glycerol, pH 7.3.
Storage	Shipped on wet ice. Store at -20°C. Stable for 12 months from date of receipt. Aliquoting is unnecessary for -20°C storage.
Precautions	[KD Validated] Anti-CTBP2 Rabbit mAb [64H74R66] is for research use only and not for use in diagnostic or therapeutic procedures.

### Protein Information

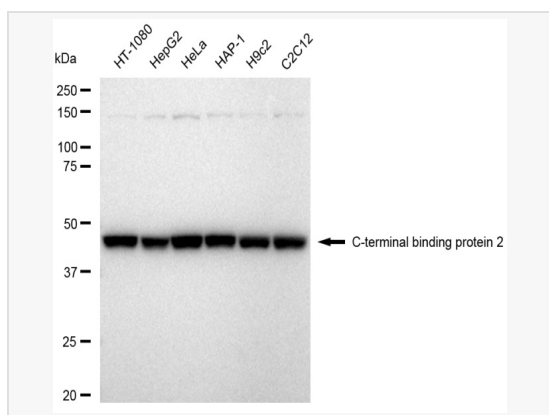
Synonyms	CTBP2; C-Terminal Binding Protein 2; C-Terminal-Binding Protein 2; Ribeye; RIBEYE; CtBP2.
Calculated MW	Calculated MW: 49 kDa, Observed MW: 47 kDa
Uniprot ID	P56545
Gene ID	1488
Background	This gene produces alternative transcripts encoding two distinct proteins. One protein is a transcriptional repressor, while the other isoform is a major component of specialized synapses known as synaptic ribbons. Both proteins contain a NAD <sup>+</sup> binding domain similar to NAD <sup>+</sup> -dependent 2-hydroxyacid dehydrogenases. A portion of the 3' untranslated region was used to map this gene to chromosome 21q21.3; however, it was noted that similar loci elsewhere in the genome are likely. Blast analysis shows that this gene is present on chromosome 10. Several transcript variants encoding two different isoforms have been found for this gene. [provided by RefSeq, Feb 2014]
Cellular Location	Nucleus. Cell junction > synapse.
Tissue Location	Ubiquitous. Highest levels in heart, skeletal muscle, and pancreas.



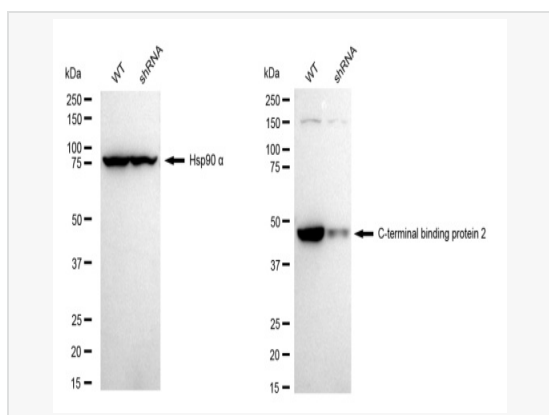
Flow cytometric analysis of C-terminal binding protein 2 expression in HeLa cells using C-terminal binding protein 2 antibody (R021195, 1:2,000). Green, isotype control; red, C-terminal binding protein 2.



Immunocytochemical staining of HeLa cells with C-terminal binding protein 2 antibody (R021195, 1:1,000). Nuclei were stained blue with DAPI; C-terminal binding protein 2 was stained magenta with Alexa Fluor® 647. Images were taken using Leica stellaris 5. Protein abundance based on laser Intensity and smart gain: High. Scale bar, 20 µm.



Western blotting analysis using C-terminal binding protein 2 antibody (R021195). Total cell lysates (30 µg) from various cell lines were loaded and separated by SDS-PAGE. The blot was incubated with C-terminal binding protein 2 antibody (R021195, 1:5,000) and HRP-conjugated goat anti-rabbit secondary antibody (1:20,000) respectively. Image was developed using ECL Substrate Kit.



Western blotting analysis using C-terminal binding protein 2 antibody (R021195). C-terminal binding protein 2 expression in wild type (WT) and C-terminal binding protein 2 shRNA knockdown (KD) HT-1080 cells with 30 µg of total cell lysates. Hsp90 α serves as a loading control. The blot was incubated with C-terminal binding protein 2 antibody (R021195, 1:5,000) and HRP-conjugated goat anti-rabbit secondary antibody (1:20,000) respectively. Image was developed using ECL Substrate Kit.