

[KD Validated] Anti-GOLIM4 Rabbit mAb

Purified Recombinant Rabbit Monoclonal Antibody

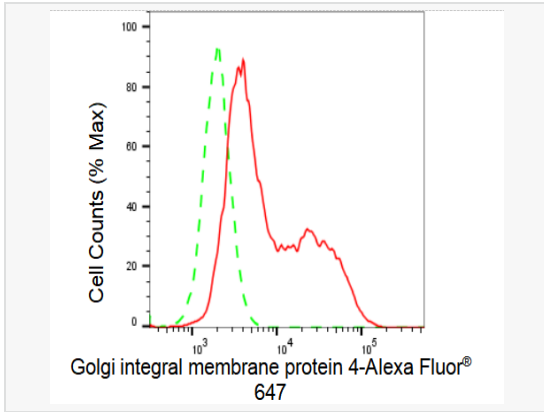
Catalog # R021148

Product Information

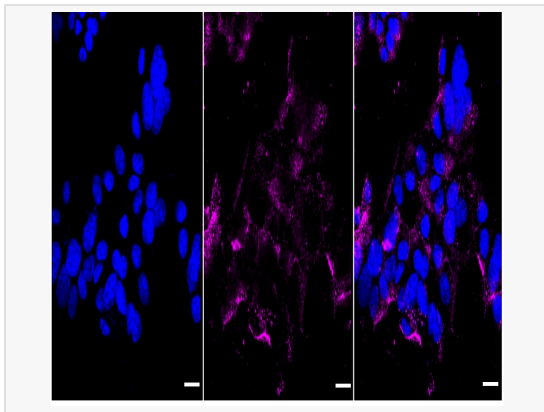
Application	WB, FC, IF (Cell)/ICC
Reactivity	Human, Mouse, Rat
Dilution	WB 1:1,000~1:5,000; FC 1:200~1:2,000; IF 1:100~1:1,000
Host	Rabbit
Clonality	Monoclonal
Clone No.	54H01S22
Isotype	IgG
Label	Unconjugated
Immunogen	A synthesized peptide derived from human GOLPH4
Format	Affinity purified monoclonal antibody supplied in PBS with 0.02% sodium azide and 50% glycerol, pH 7.3.
Storage	Shipped on wet ice. Store at -20°C. Stable for 12 months from date of receipt. Aliquoting is unnecessary for -20°C storage.
Precautions	[KD Validated] Anti-GOLIM4 Rabbit mAb [54H01S22] is for research use only and not for use in diagnostic or therapeutic procedures.

Protein Information

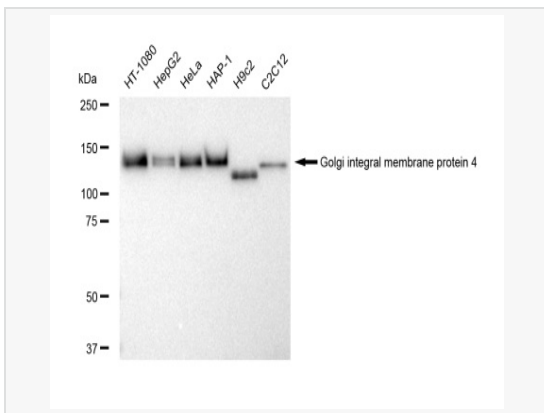
Synonyms	GOLIM4; Golgi Integral Membrane Protein 4; GPP130; GIMPC; Golgi Phosphoprotein 4; GOLPH4; P138; Golgi-Localized Phosphoprotein Of 130 KDa; Golgi Integral Membrane Protein, Cis; Golgi Phosphoprotein Of 130 KDa; Cis Golgi-Localized Calcium-Binding Protein; 130 KDa Golgi-Localized Phosphoprotein; Type II Golgi Membrane Protein; GIMPC.
Calculated MW	Calculated MW: 82 kDa, Observed MW: 130 kDa
Uniprot ID	O00461
Gene ID	27333



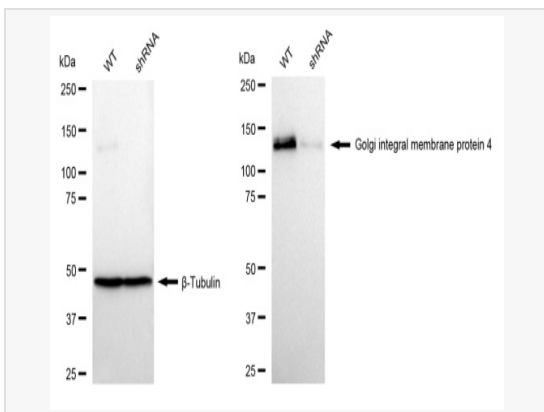
Flow cytometric analysis of Golgi integral membrane protein 4 expression in HAP-1 cells using Golgi integral membrane protein 4 antibody (R021148, 1:2,000). Green, isotype control; red, Golgi integral membrane protein 4.



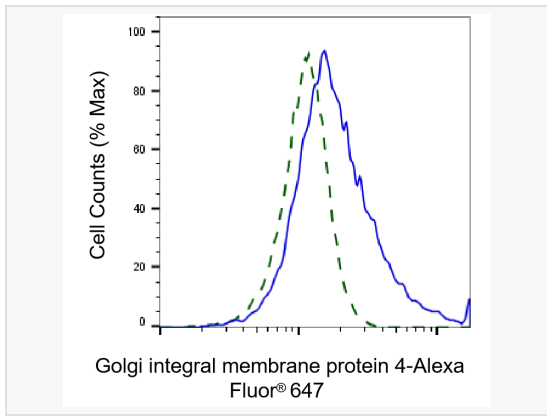
Immunocytochemical staining of HAP-1 cells with Golgi integral membrane protein 4 antibody (R021148, 1:1,000). Nuclei were stained blue with DAPI; Golgi integral membrane protein 4 was stained magenta with Alexa Fluor® 647. Images were taken using Leica stellaris 5. Protein abundance based on laser Intensity and smart gain:High. Scale bar, 20 µm.



Western blotting analysis using Golgi integral membrane protein 4 antibody (R021148). Total cell lysates (30 µg) from various cell lines were loaded and separated by SDS-PAGE. The blot was incubated with Golgi integral membrane protein 4 antibody (R021148, 1:5,000) and HRP-conjugated goat anti-rabbit secondary antibody (1:20,000) respectively. Image was developed using ECL Substrate Kit.



Western blotting analysis using Golgi integral membrane protein 4 antibody (R021148). Golgi integral membrane protein 4 expression in wild type (WT) and Golgi integral membrane protein 4 shRNA knockdown (KD) HeLa cells with 30 µg of total cell lysates. β-Tubulin serves as a loading control. The blot was incubated with Golgi integral membrane protein 4 antibody (R021148, 1:5,000) and HRP-conjugated goat anti-rabbit secondary antibody (1:20,000) respectively. Image was developed using ECL Substrate Kit.



Validation of Golgi integral membrane protein 4 knockdown using flow cytometry. Wild-type(WT, Blue) and knockdown(KD, Green) HeLa cells were stained with Golgi integral membrane protein 4 antibody (R021148, 1:2,000) and analyzed using BD flow cytometer.