

[KD Validated] Anti-ACACA Rabbit mAb

Purified Recombinant Rabbit Monoclonal Antibody

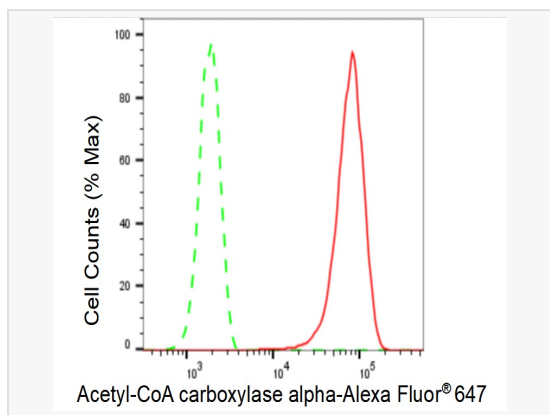
Catalog # R021138

Product Information

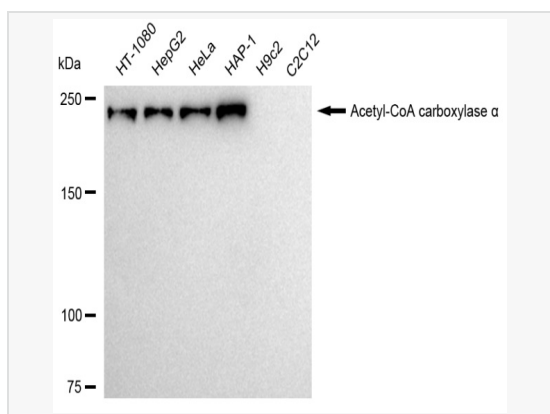
Application	WB, FC
Reactivity	Human
Dilution	WB 1:1,000~1:5,000; FC 1:200~1:2,000
Host	Rabbit
Clonality	Monoclonal
Clone No.	89R60N19
Isotype	IgG
Label	Unconjugated
Immunogen	A synthesized peptide derived from human Acetyl Coenzyme A Carboxylase
Format	Affinity purified monoclonal antibody supplied in PBS with 0.02% sodium azide and 50% glycerol, pH 7.3.
Storage	Shipped on wet ice. Store at -20°C. Stable for 12 months from date of receipt. Aliquoting is unnecessary for -20°C storage.
Precautions	[KD Validated] Anti-ACACA Rabbit mAb [89R60N19] is for research use only and not for use in diagnostic or therapeutic procedures.

Protein Information

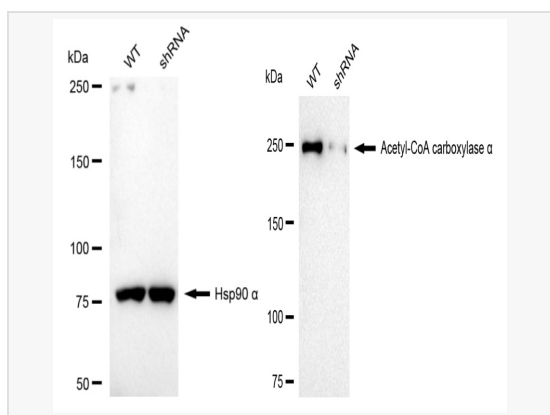
Synonyms	ACACA; Acetyl-CoA Carboxylase Alpha; ACC1; ACCA; Acetyl-Coenzyme A Carboxylase Alpha; Acetyl-CoA Carboxylase 1; ACC-Alpha; HACCI; ACAC; ACACalpha; ACCalpha; Acac 1; ACC; EC 6.4.1.2; ACACALPHA; ACC-ALPHA; ACCALPHA; ACACAD; ACAC1.
Calculated MW	Calculated MW: 266 kDa, Observed MW: 266 kDa
Uniprot ID	Q13085
Gene ID	31
Background	Catalyzes the rate-limiting reaction in the biogenesis of long-chain fatty acids. Carries out three functions: biotin carboxyl carrier protein, biotin carboxylase and carboxyltransferase.



Flow cytometric analysis of Acetyl-CoA carboxylase alpha expression in HepG2 cells using Acetyl-CoA carboxylase alpha antibody (R021138, 1:2,000). Green, isotype control; red, Acetyl-CoA carboxylase alpha.



Western blotting analysis using Acetyl-CoA carboxylase alpha antibody (R021138). Total cell lysates (30 μ g) from various cell lines were loaded and separated by SDS-PAGE. The blot was incubated with Acetyl-CoA carboxylase alpha antibody (R021138, 1:5,000) and HRP-conjugated goat anti-rabbit secondary antibody (1:20,000) respectively. Image was developed using ECL Substrate Kit.



Western blotting analysis using Acetyl-CoA carboxylase α antibody (R021138). Acetyl-CoA carboxylase α expression in wild type (WT) and Acetyl-CoA carboxylase α shRNA knockdown (KD) HeLa cells with 20 μ g of total cell lysates. Hsp90 α serves as a loading control. The blot was incubated with Acetyl-CoA carboxylase α antibody (R021138, 1:5,000) and HRP-conjugated goat anti-rabbit secondary antibody (1:20,000) respectively. Image was developed using ECL Substrate Kit.