

[KD Validated] Anti-GRB2 Rabbit mAb

Purified Recombinant Rabbit Monoclonal Antibody

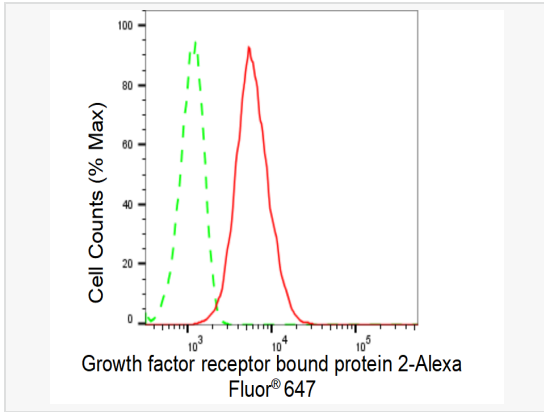
Catalog # R021116

Product Information

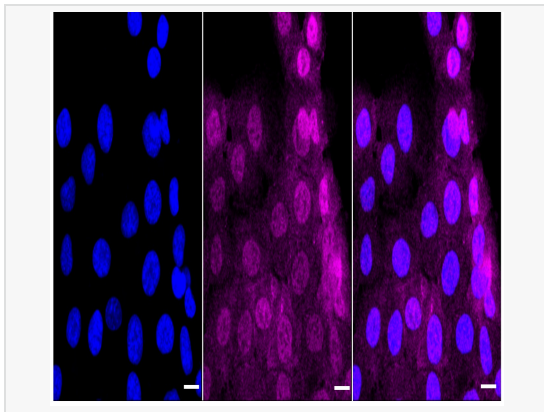
Application	WB, FC, IF (Cell)/ICC
Reactivity	Human, Mouse, Rat
Dilution	WB 1:1,000~1:5,000; FC 1:200~1:2,000; IF 1:100~1:1,000
Host	Rabbit
Clonality	Monoclonal
Clone No.	53C94R30
Isotype	IgG
Label	Unconjugated
Immunogen	A synthesized peptide derived from human GRB2
Format	Affinity purified monoclonal antibody supplied in PBS with 0.02% sodium azide and 50% glycerol, pH 7.3.
Storage	Shipped on wet ice. Store at -20°C. Stable for 12 months from date of receipt. Aliquoting is unnecessary for -20°C storage.
Precautions	[KD Validated] Anti-GRB2 Rabbit mAb [53C94R30] is for research use only and not for use in diagnostic or therapeutic procedures.

Protein Information

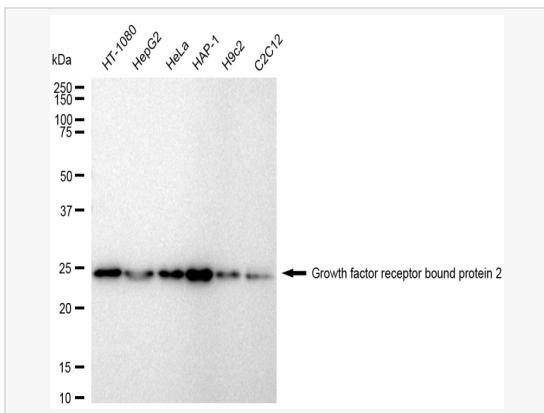
Synonyms	GRB2; Growth Factor Receptor Bound Protein 2; Growth Factor Receptor-Bound Protein 2; NCKAP2; SH2/SH3 Adapter GRB2; Protein Ash; ASH; Epidermal Growth Factor Receptor-Binding Protein GRB2; Epididymis Secretory Sperm Binding Protein; Growth Factor Receptor-Bound Protein 3; Antibodyundant SRC Homology; Adapter Protein GRB2; EGFRBP-GRB2; MSTP084; Grb3-3; MST084; HT027.
Calculated MW	Calculated MW: 25 kDa, Observed MW: 25 kDa
Uniprot ID	P62993
Gene ID	2885
Background	Adapter protein that provides a critical link between cell surface growth factor receptors and the Ras signaling pathway.



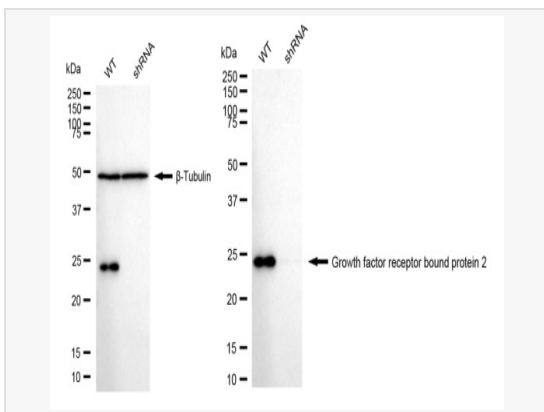
Flow cytometric analysis of Growth factor receptor bound protein 2 expression in HT-1080 cells using Growth factor receptor bound protein 2 antibody (R021116, 1:2,000). Green, isotype control; red, Growth factor receptor bound protein 2.



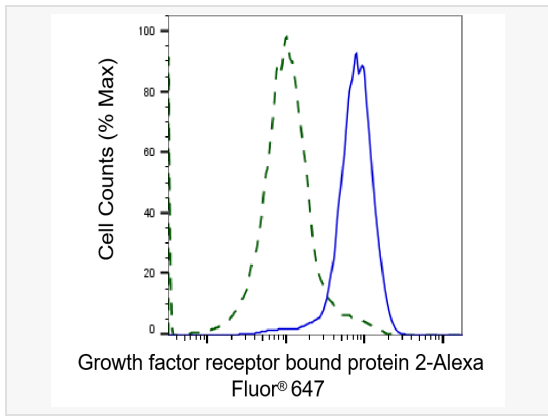
Immunocytochemical staining of HT-1080 cells with Growth factor receptor bound protein 2 antibody (R021116, 1:1,000). Nuclei were stained blue with DAPI; Growth factor receptor bound protein 2 was stained magenta with Alexa Fluor® 647. Images were taken using Leica stellaris 5. Protein abundance based on laser Intensity and smart gain: Medium. Scale bar, 20 μm.



Western blotting analysis using Growth factor receptor bound protein 2 antibody (R021116). Total cell lysates (30 μg) from various cell lines were loaded and separated by SDS-PAGE. The blot was incubated with Growth factor receptor bound protein 2 antibody (R021116, 1:5,000) and HRP-conjugated goat anti-rabbit secondary antibody (1:20,000) respectively. Image was developed using ECL Substrate Kit.



Western blotting analysis using Growth factor receptor bound protein 2 antibody (R021116). Growth factor receptor bound protein 2 expression in wild type (WT) and Growth factor receptor bound protein 2 shRNA knockdown (KD) HeLa cells with 30 μg of total cell lysates. β-Tubulin serves as a loading control. The blot was incubated with Growth factor receptor bound protein 2 antibody (R021116, 1:5,000) and HRP-conjugated goat anti-rabbit secondary antibody (1:20,000) respectively. Image was developed using ECL Substrate Kit.



Validation of Growth factor receptor bound protein 2 knockdown using flow cytometry. Wild-type(WT, Blue) and knockdown(KD, Green) HeLa cells were stained with Growth factor receptor bound protein 2 antibody (R021116, 1:2,000) and analyzed using BD flow cytometer.