

## [KD Validated] Anti-KSR1 Rabbit mAb

Purified Recombinant Rabbit Monoclonal Antibody

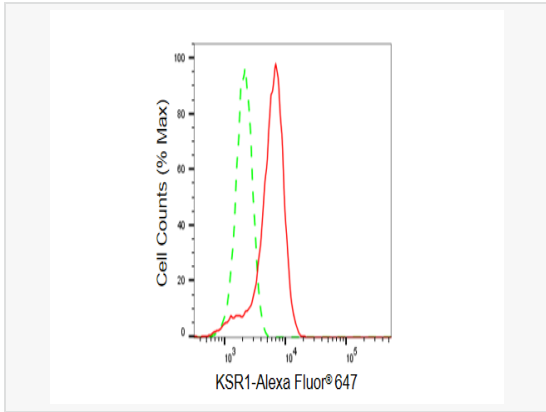
Catalog # R021113

### Product Information

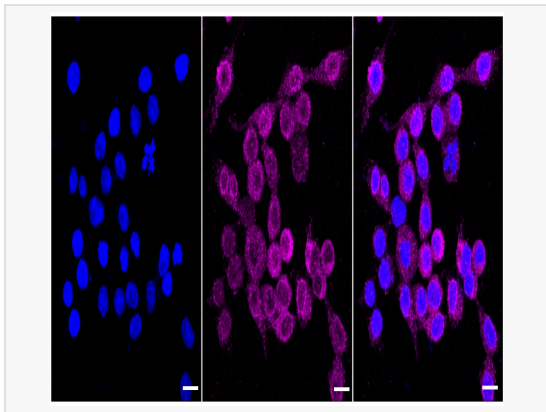
Application	WB, FC, IF (Cell)/ICC
Reactivity	Human, Rat
Dilution	WB 1:1,000~1:5,000; FC 1:200~1:2,000; IF 1:100~1:1,000
Host	Rabbit
Clonality	Monoclonal
Clone No.	10F41G01
Isotype	IgG
Label	Unconjugated
Immunogen	A synthesized peptide derived from human KSR1
Format	Affinity purified monoclonal antibody supplied in PBS with 0.02% sodium azide and 50% glycerol, pH 7.3.
Storage	Shipped on wet ice. Store at -20°C. Stable for 12 months from date of receipt. Aliquoting is unnecessary for -20°C storage.
Precautions	[KD Validated] Anti-KSR1 Rabbit mAb [10F41G01] is for research use only and not for use in diagnostic or therapeutic procedures.

### Protein Information

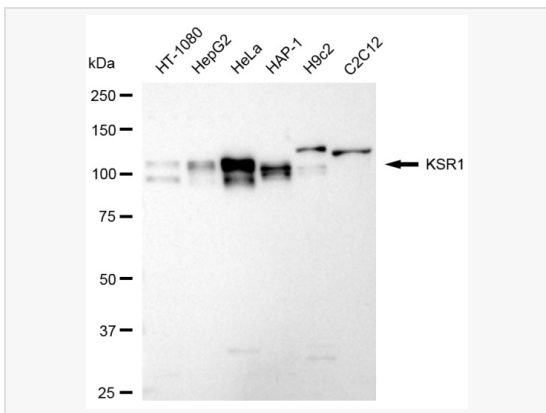
Synonyms	KSR1; Kinase Suppressor Of Ras 1; RSU2; KSR; Kinase Suppressor Of Ras; EC 2.7.11.1.
Calculated MW	Calculated MW: 102 kDa, Observed MW: 120 kDa
Uniprot ID	Q81VT5
Gene ID	8844
Background	Scaffolding protein that is part of a multiprotein signaling complex. Promotes phosphorylation of Raf family members and activation of downstream MAP kinases. Promotes activation of MAPK1 and/or MAPK3, both in response to EGF and to cAMP. Does not have kinase activity by itself.
Cellular Location	Cytoplasm. Membrane. In unstimulated cells, where the phosphorylated form is bound to a 14-3-3 protein, sequestration in the cytoplasm occurs. Following growth factor treatment, the protein is free for membrane translocation, and it moves from the cytoplasm to the cell periphery.



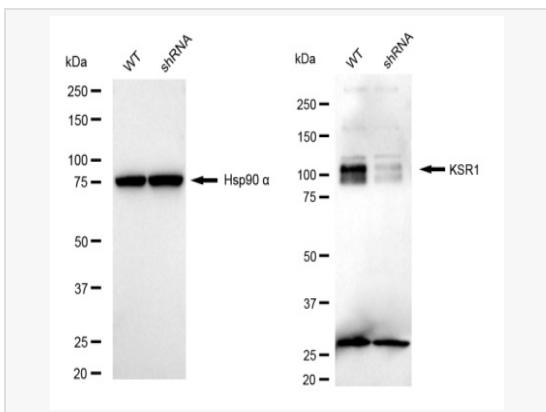
Flow cytometric analysis of KSR1 expression in HeLa cells using KSR1 antibody(R021113, 1:2,000). Green, isotype control; red, KSR1.



Immunocytochemical staining of HeLa cells with KSR1 antibody (R021113, 1:1,000) . Nuclei were stained blue with DAPI; KSR1 was stained magenta with Alexa Fluor® 647. Images were taken using Leica stellaris 5. Protein abundance based on laser Intensity and smart gain: Medium. Scale bar, 20 µm.



Western blotting analysis using KSR1 antibody (R021113). Total cell lysates (30 µg) from various cell lines were loaded and separated by SDS-PAGE. The blot was incubated with KSR1 antibody (R021113, 1:5,000) and HRP-conjugated goat anti-rabbit secondary antibody (1:20,000) respectively. Image was developed using ECL Substrate Kit.



Western blotting analysis using KSR1 antibody (R021113). KSR1 expression in wild type (WT) and KSR1 shRNA knockdown (KD) HT-1080 cells with 30 µg of total cell lysates. Hsp90 α serves as a loading control. The blot was incubated with KSR1 antibody (R021113, 1:5,000) and HRP-conjugated goat anti-rabbit secondary antibody (1:20,000) respectively. Image was developed using ECL Substrate Kit.