

[KD Validated] Anti-IL13RA1 Rabbit mAb

Purified Recombinant Rabbit Monoclonal Antibody

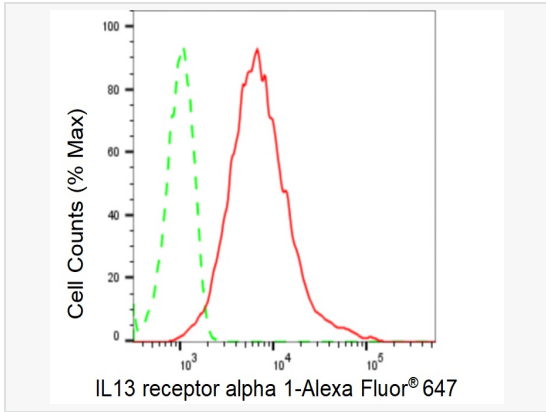
Catalog # R021098

Product Information

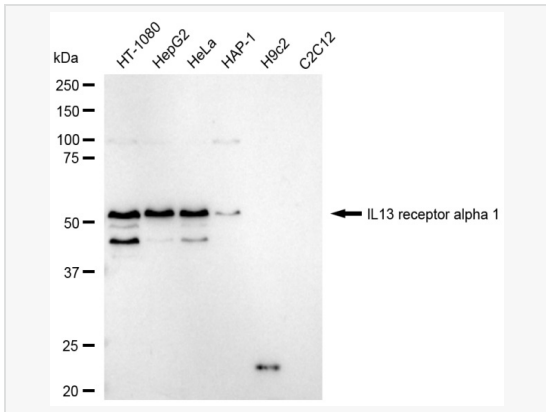
Application	WB, FC
Reactivity	Human
Dilution	WB 1:1,000~1:5,000; FC 1:200~1:2,000
Host	Rabbit
Clonality	Monoclonal
Clone No.	55H40C93
Isotype	IgG
Label	Unconjugated
Immunogen	A synthesized peptide derived from human IL13 receptor alpha 1
Format	Affinity purified monoclonal antibody supplied in PBS with 0.02% sodium azide and 50% glycerol, pH 7.3.
Storage	Shipped on wet ice. Store at -20°C. Stable for 12 months from date of receipt. Aliquoting is unnecessary for -20°C storage.
Precautions	[KD Validated] Anti-IL13RA1 Rabbit mAb [55H40C93] is for research use only and not for use in diagnostic or therapeutic procedures.

Protein Information

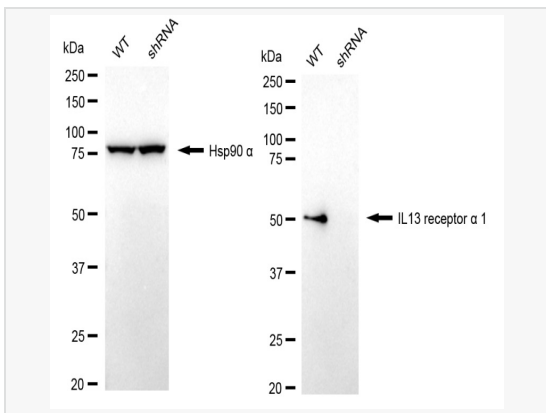
Synonyms	IL13RA1; Interleukin 13 Receptor Subunit Alpha 1; CD213a1 Antigen; IL-13Ra; CD213a1; NR4; Interleukin-13 Receptor Subunit Alpha-1; Interleukin 13 Receptor, Alpha 1; IL-13 Receptor Subunit Alpha-1; IL13 Receptor Alpha-1 Chain; Cancer/Testis Antigen 19; IL-13R Subunit Alpha-1; CT19; IL-13R-Alpha-1; IL-13RA1; IL13RA; IL13R.
Calculated MW	Calculated MW: 49 kDa, Observed MW: 50 kDa
Uniprot ID	P78552
Gene ID	3597
Background	The protein encoded by this gene is a subunit of the interleukin 13 receptor. This subunit forms a receptor complex with IL4 receptor alpha, a subunit shared by IL13 and IL4 receptors. This subunit serves as a primary IL13-binding subunit of the IL13 receptor, and may also be a component of IL4 receptors. This protein has been shown to bind tyrosine kinase TYK2, and thus may mediate the signaling processes that lead to the activation of JAK1, STAT3 and STAT6 induced by IL13 and IL4. [provided by RefSeq, Jul 2008].
Cellular Location	Membrane.
Tissue Location	Ubiquitous. Highest levels in heart, liver, skeletal muscle and ovary; lowest levels in brain, lung and kidney. Also found in B-cells, T-cells and endothelial cells.



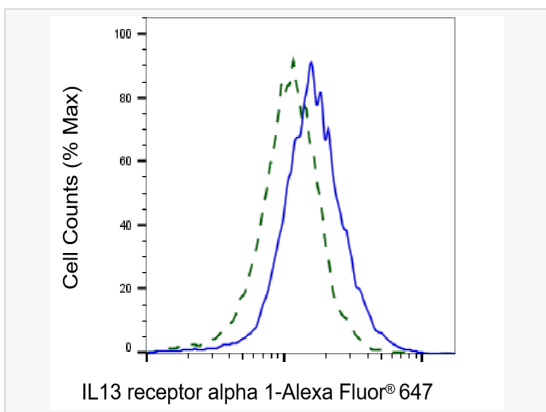
Flow cytometric analysis of IL13 receptor alpha 1 expression in HepG2 cells using IL13 receptor alpha 1 antibody (R021098, 1:2,000). Green, isotype control; red, IL13 receptor alpha 1.



Western blotting analysis using IL13 receptor alpha 1 antibody (R021098). Total cell lysates (30 µg) from various cell lines were loaded and separated by SDS-PAGE. The blot was incubated with IL13 receptor alpha 1 antibody (R021098, 1:5,000) and HRP-conjugated goat anti-rabbit secondary antibody (1:20,000) respectively. Image was developed using ECL Substrate Kit.



Western blotting analysis using IL13 receptor alpha 1 antibody (R021098). IL13 receptor alpha 1 expression in wild type (WT) and IL13 receptor alpha 1 shRNA knockdown (KD) HeLa cells with 20 µg of total cell lysates. Hsp90 alpha serves as a loading control. The blot was incubated with IL13 receptor alpha 1 antibody (R021098, 1:5,000) and HRP-conjugated goat anti-rabbit secondary antibody (1:20,000) respectively. Image was developed using ECL Substrate Kit.



Validation of IL13 receptor alpha 1 knockdown using flow cytometry. Wild-type(WT, Blue) and knockdown(KD, Green) HeLa cells were stained with IL13 receptor alpha 1 antibody (R021098, 1:2,000) and analyzed using BD flow cytometer.