

## [KD Validated] Anti-MADD Rabbit mAb

Purified Recombinant Rabbit Monoclonal Antibody

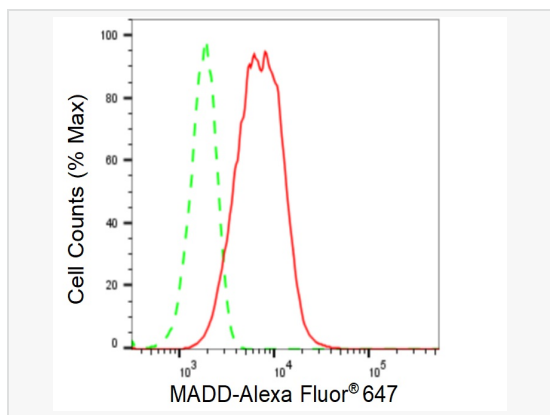
Catalog # R021087

### Product Information

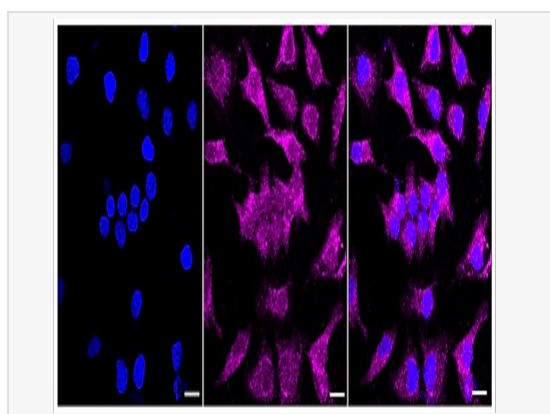
Application	WB, FC, IF (Cell)/ICC
Reactivity	Human, Mouse, Rat
Dilution	WB 1:1,000~1:5,000; FC 1:200~1:2,000; IF 1:100~1:1,000
Host	Rabbit
Clonality	Monoclonal
Clone No.	68Q61R91
Isotype	IgG
Label	Unconjugated
Immunogen	A synthesized peptide derived from human DENN
Format	Affinity purified monoclonal antibody supplied in PBS with 0.02% sodium azide and 50% glycerol, pH 7.3.
Storage	Shipped on wet ice. Store at -20°C. Stable for 12 months from date of receipt. Aliquoting is unnecessary for -20°C storage.
Precautions	[KD Validated] Anti-MADD Rabbit mAb [68Q61R91] is for research use only and not for use in diagnostic or therapeutic procedures.

### Protein Information

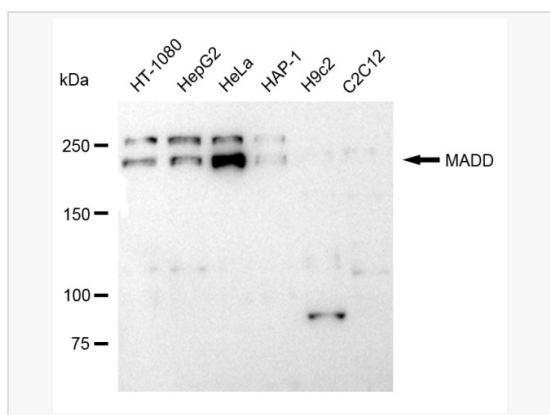
Synonyms	MAP Kinase Activating Death Domain; DENN; Differentially Expressed In Normal And Neoplastic Cells; KIAA0358; RAB3GEP; IG20; MAP Kinase-Activating Death Domain Protein; Insuloma-Glucagonoma Protein 20; Insulinoma Glucagonoma Clone 20; Rab3 GDP/GTP Exchange Protein; Rab3 GDP/GTP Exchange Factor; RabGEF; MAP-Kinase Activating Death Domain; NEDDISH; Rab3GEP; DEEAH.
Calculated MW	Calculated MW: 183 kDa, Observed MW: 230 kDa
Uniprot ID	Q8WXG6
Gene ID	8567
Background	Guanyl-nucleotide exchange factor that regulates small GTPases of the Rab family.



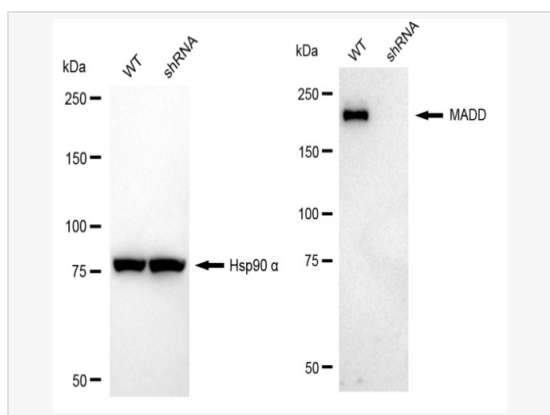
Flow cytometric analysis of MADD expression in HeLa cells using MADD antibody (R021087, 1:2,000). Green, isotype control; red, MADD.



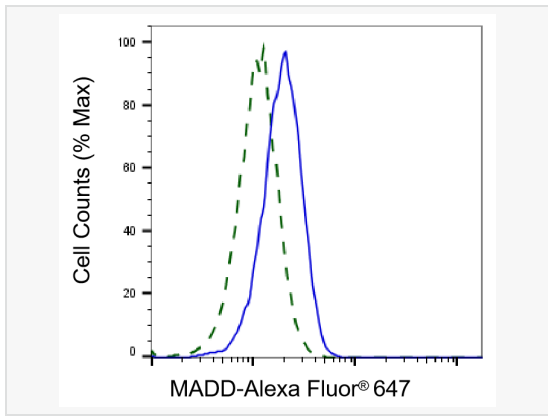
Immunocytochemical staining of HeLa cells with MADD antibody (R021087, 1:1,000). Nuclei were stained blue with DAPI; MADD was stained magenta with Alexa Fluor® 647. Images were taken using Leica stellaris 5. Protein abundance based on laser Intensity and smart gain: Medium. Scale bar: 20 µm.



Western blotting analysis using MADD antibody (R021087). Total cell lysates (30 µg) from various cell lines were loaded and separated by SDS-PAGE. The blot was incubated with MADD antibody (R021087, 1:5,000) and HRP-conjugated goat anti-rabbit secondary antibody (1:20,000) respectively. Image was developed using ECL Substrate Kit.



Western blotting analysis using MADD antibody (R021087). MADD expression in wild type (WT) and MADD shRNA knockdown (KD) HeLa cells with 20 µg of total cell lysates. Hsp90 α serves as a loading control. The blot was incubated with MADD antibody (R021087, 1:5,000) and HRP-conjugated goat anti-rabbit secondary antibody (1:20,000) respectively. Image was developed using ECL Substrate Kit.



Validation of MADD knockdown using flow cytometry. Wild-type(WT, Blue) and knockdown(KD, Green) HeLa cells were stained with MADD antibody (R021087, 1:2,000) and analyzed using BD flow cytometer.