

[KD Validated] Anti-MYD88 Rabbit mAb

Purified Recombinant Rabbit Monoclonal Antibody

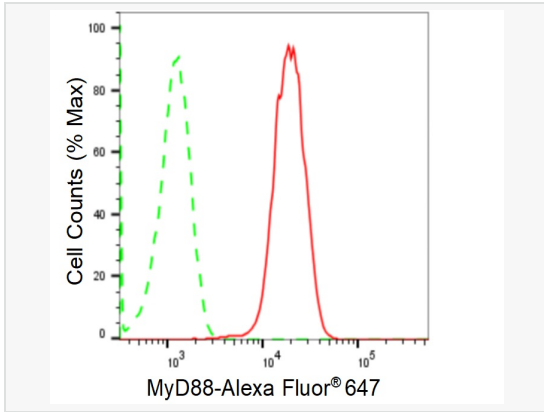
Catalog # R021083

Product Information

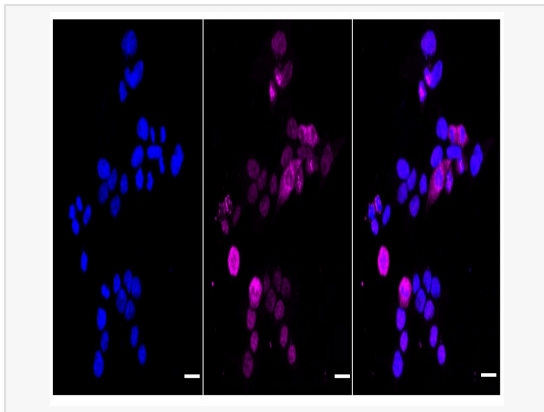
Application	WB, FC, IF (Cell)/ICC
Reactivity	Human
Dilution	WB 1:1,000~1:5,000; FC 1:200~1:2,000; IF 1:100~1:1,000
Host	Rabbit
Clonality	Monoclonal
Clone No.	94T79D17
Isotype	IgG
Label	Unconjugated
Immunogen	A synthesized peptide derived from human MyD88
Format	Affinity purified monoclonal antibody supplied in PBS with 0.02% sodium azide and 50% glycerol, pH 7.3.
Storage	Shipped on wet ice. Store at -20°C. Stable for 12 months from date of receipt. Aliquoting is unnecessary for -20°C storage.
Precautions	[KD Validated] Anti-MYD88 Rabbit mAb [94T79D17] is for research use only and not for use in diagnostic or therapeutic procedures.

Protein Information

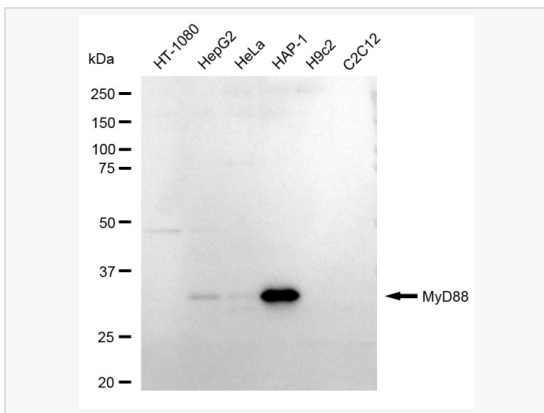
Synonyms	MYD88 Innate Immune Signal Transduction Adaptor; Myeloid Differentiation Primary Response Protein MyD88; Myeloid Differentiation Primary Response Gene (88); Myeloid Differentiation Primary Response 88; TLR Adaptor MYD88; Mutant Myeloid Differentiation Primary Response 88; MYD88D; IMD68; WM1.
Calculated MW	Calculated MW: 33 kDa, Observed MW: 33 kDa
Uniprot ID	Q99836
Gene ID	4615
Background	Members of the Toll-like receptor (TLR) family, named for the closely related Toll receptor in <i>Drosophila</i> , play a pivotal role in innate immune responses. TLRs recognize conserved motifs found in various pathogens and mediate defense responses. Triggering of the TLR pathway leads to the activation of NF- κ B and subsequent regulation of immune and inflammatory genes.



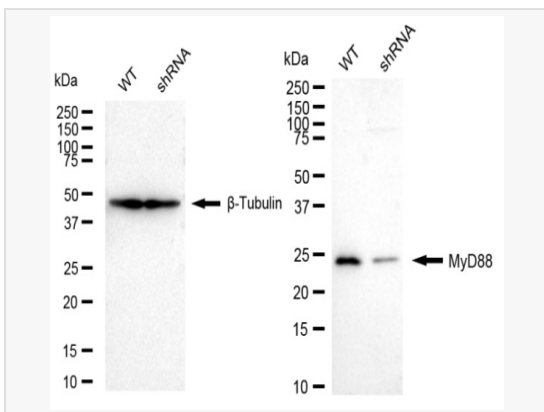
Flow cytometric analysis of MyD88 expression in HAP-1 cells using MyD88 antibody (R021083, 1:2,000). Green, isotype control; red, MyD88.



Immunocytochemical staining of HAP-1 cells with MyD88 antibody (R021083, 1:1,000). Nuclei were stained blue with DAPI; MyD88 was stained magenta with Alexa Fluor® 647. Images were taken using Leica stellaris 5. Protein abundance based on laser Intensity and smart gain: High. Scale bar: 20 µm.



Western blotting analysis using MyD88 antibody (R021083). Total cell lysates (30 µg) from various cell lines were loaded and separated by SDS-PAGE. The blot was incubated with MyD88 antibody (R021083, 1:5,000) and HRP-conjugated goat anti-rabbit secondary antibody (1:20,000) respectively. Image was developed using ECL Substrate Kit.



Western blotting analysis using MyD88 antibody (R021083). MyD88 expression in wild type (WT) and MyD88 shRNA knockdown (KD) HT-1080 cells with 20 µg of total cell lysates. β-Tubulin serves as a loading control. The blot was incubated with MyD88 antibody (R021083, 1:5,000) and HRP-conjugated goat anti-rabbit secondary antibody (1:20,000) respectively. Image was developed using ECL Substrate Kit.