

## [KD Validated] Anti-MAP3K2 Rabbit mAb

Purified Recombinant Rabbit Monoclonal Antibody

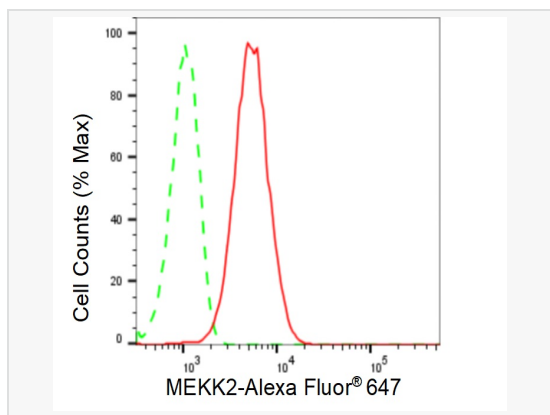
Catalog # R021081

### Product Information

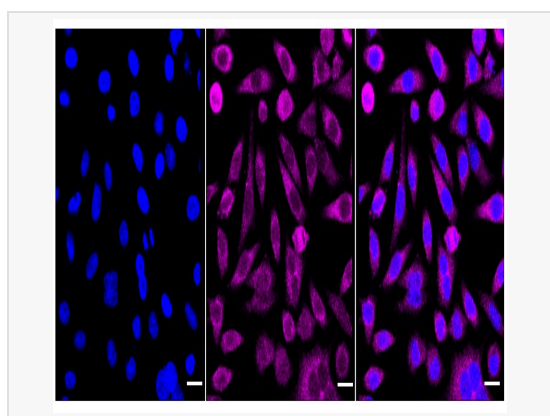
Application	WB, FC, IF (Cell)/ICC
Reactivity	Human, Mouse, Rat
Dilution	WB 1:4,000~1:20,000; FC 1:200~1:2,000; IF 1:100~1:1,000
Host	Rabbit
Clonality	Monoclonal
Clone No.	10C40E93
Isotype	IgG
Label	Unconjugated
Immunogen	A synthesized peptide derived from human MEKK2
Format	Affinity purified monoclonal antibody supplied in PBS with 0.02% sodium azide and 50% glycerol, pH 7.3.
Storage	Shipped on wet ice. Store at -20°C. Stable for 12 months from date of receipt. Aliquoting is unnecessary for -20°C storage.
Precautions	[KD Validated] Anti-MAP3K2 Rabbit mAb [10C40E93] is for research use only and not for use in diagnostic or therapeutic procedures.

### Protein Information

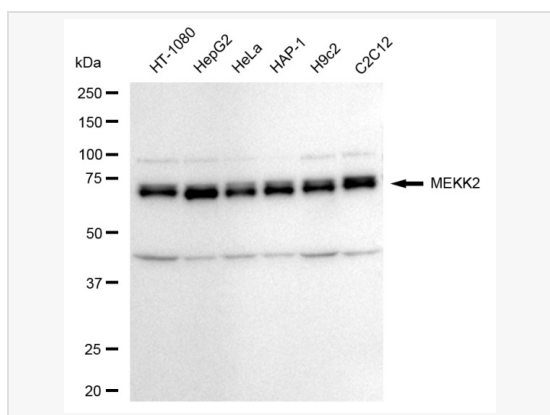
Synonyms	Mitogen-Activated Protein Kinase Kinase 2; MEKK2B; MEKK2; MAPK/ERK Kinase Kinase 2; MAP/ERK Kinase Kinase 2; MEK Kinase 2; MEKK 2; EC 2.7.11.25; MAPKKK2.
Calculated MW	Calculated MW: 70 kDa, Observed MW: 70 kDa
Uniprot ID	Q9Y2U5
Gene ID	10746
Background	The protein encoded by this gene is a member of serine/threonine protein kinase family. This kinase preferentially activates the kinases involved in the MAP kinase signaling pathway including MAPK7 and MAP2K4. This kinase has been shown to directly phosphorylate and activate I kappa B kinases (IKKs), and thus plays a role in NF-kappa B signaling pathway. This kinase has also been found to bind and activate protein kinase C-related kinase 2 (PRKCL2/PRK2), which suggests its involvement in PRKCL2 regulated signaling process.



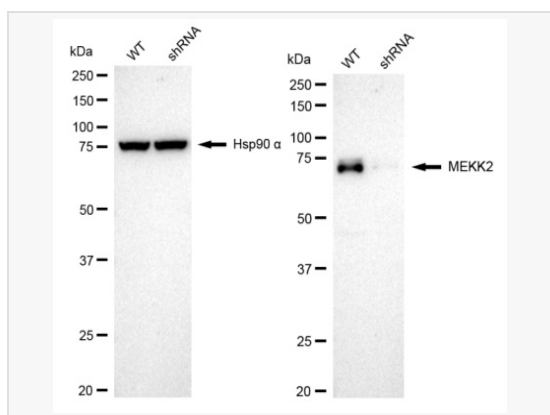
Flow cytometric analysis of MEKK2 expression in HepG2 cells using MEKK2 antibody (R021081, 1:2,000). Green, isotype control; red, MEKK2.



Immunocytochemical staining of HeLa cells with MEKK2 antibody (R021081, 1:1,000). Nuclei were stained blue with DAPI; MEKK2 was stained magenta with Alexa Fluor® 647. Images were taken using Leica stellaris 5. Protein abundance based on laser Intensity and smart gain: Medium. Scale bar: 20  $\mu$ m.



Western blotting analysis using MEKK2 antibody (R021081). Total cell lysates (30  $\mu$ g) from various cell lines were loaded and separated by SDS-PAGE. The blot was incubated with MEKK2 antibody (R021081, 1:20,000) and HRP-conjugated goat anti-rabbit secondary antibody (1:20,000) respectively. Image was developed using ECL Substrate Kit.



Western blotting analysis using MEKK2 antibody (R021081). MEKK2 expression in wild type (WT) and MEKK2 shRNA knockdown (KD) HT-1080 cells with 20  $\mu$ g of total cell lysates. Hsp90  $\alpha$  serves as a loading control. The blot was incubated with MEKK2 antibody (R021081, 1:20,000) and HRP-conjugated goat anti-rabbit secondary antibody (1:20,000) respectively. Image was developed using ECL Substrate Kit.