

[KD Validated] Anti-MVP Rabbit mAb

Purified Recombinant Rabbit Monoclonal Antibody

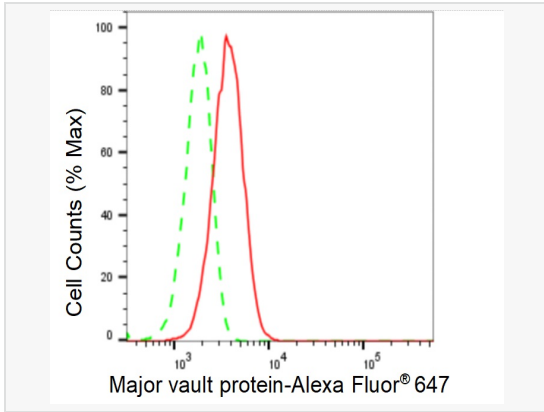
Catalog # R021067

Product Information

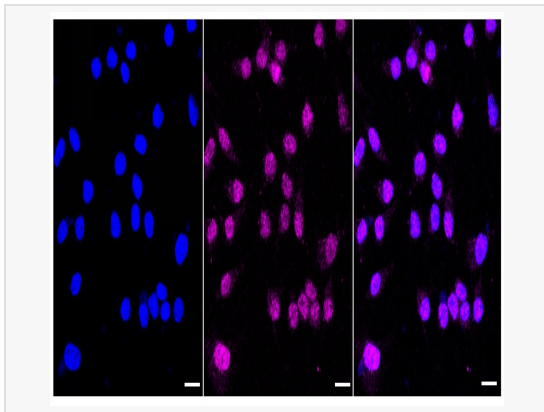
Application	WB, FC, IF (Cell)/ICC
Reactivity	Human, Mouse, Rat
Dilution	WB 1:1,000~1:5,000; FC 1:200~1:2,000; IF 1:100~1:1,000
Host	Rabbit
Clonality	Monoclonal
Clone No.	43S87M42
Isotype	IgG
Label	Unconjugated
Immunogen	A synthesized peptide derived from human MVP
Format	Affinity purified monoclonal antibody supplied in PBS with 0.02% sodium azide and 50% glycerol, pH 7.3.
Storage	Shipped on wet ice. Store at -20°C. Stable for 12 months from date of receipt. Aliquoting is unnecessary for -20°C storage.
Precautions	[KD Validated] Anti-MVP Rabbit mAb [43S87M42] is for research use only and not for use in diagnostic or therapeutic procedures.

Protein Information

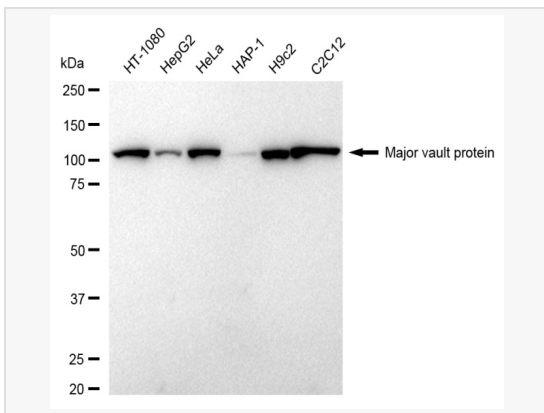
Synonyms	Major Vault Protein; LRP; Lung Resistance-Related Protein; VAULT1; Testicular Secretory Protein Li 30.
Calculated MW	Calculated MW: 99 kDa, Observed MW: 110 kDa
Uniprot ID	Q14764
Gene ID	9961
Background	Required for normal vault structure. Vaults are multi-subunit structures that may act as scaffolds for proteins involved in signal transduction. Vaults may also play a role in nucleo-cytoplasmic transport.
Cellular Location	Cytoplasm. Nucleus > nuclear pore complex. 5% found in the nuclear pore complex. Translocates from the nucleus to the cytoplasm upon EGF treatment.
Tissue Location	Present in most normal tissues. Higher expression observed in epithelial cells with secretory and excretory functions, as well as in cells chronically exposed to xenobiotics, such as bronchial cells and cells lining the intestine. Overexpressed in many multidrug-resistant cancer cells.



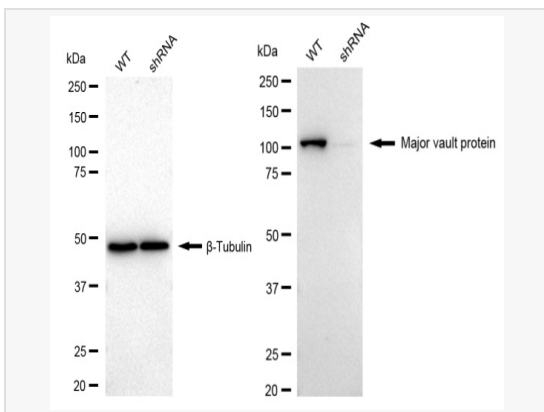
Flow cytometric analysis of Major vault protein expression in HeLa cells using Major vault protein antibody (R021067, 1:2,000). Green, isotype control; red, Major vault protein.



Immunocytochemical staining of HeLa cells with Major vault protein antibody (R021067, 1:1,000). Nuclei were stained blue with DAPI; Major vault protein was stained magenta with Alexa Fluor® 647. Images were taken using Leica stellaris 5. Protein abundance based on laser Intensity and smart gain: Medium. Scale bar: 20 µm.



Western blotting analysis using Major vault protein antibody (R021067). Total cell lysates (30 µg) from various cell lines were loaded and separated by SDS-PAGE. The blot was incubated with Major vault protein antibody (R021067, 1:5,000) and HRP-conjugated goat anti-rabbit secondary antibody (1:20,000) respectively. Image was developed using ECL Substrate Kit.



Western blotting analysis using Major Vault Protein antibody (R021067). Major Vault Protein expression in wild type (WT) and Major Vault Protein shRNA knockdown (KD) HeLa cells with 20 µg of total cell lysates. β-Tubulin serves as a loading control. The blot was incubated with Major Vault Protein antibody (R021067, 1:5,000) and HRP-conjugated goat anti-rabbit secondary antibody (1:20,000) respectively. Image was developed using ECL Substrate Kit.