

[KD Validated] Anti-NLK Rabbit mAb

Purified Recombinant Rabbit Monoclonal Antibody

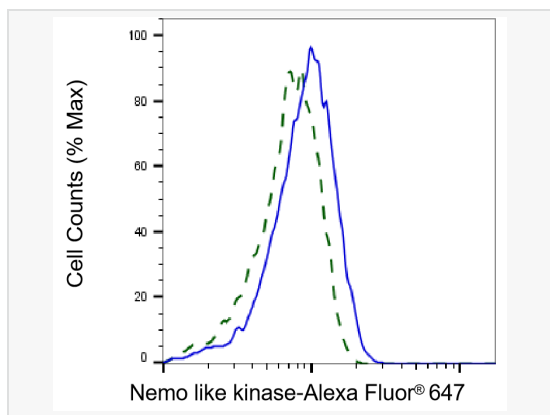
Catalog # R021058

Product Information

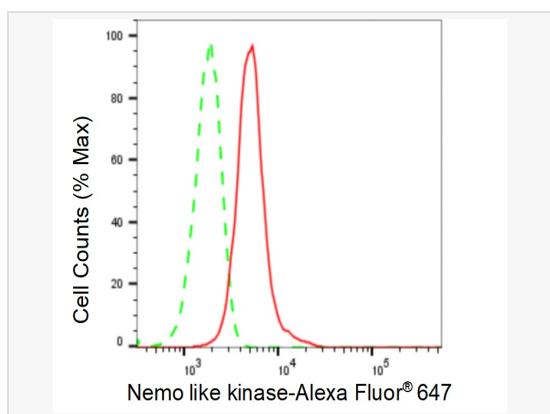
Application	WB, FC, IF (Cell)/ICC
Reactivity	Human
Dilution	WB 1:1,000~1:5,000; FC 1:200~1:2,000; IF 1:100~1:1,000
Host	Rabbit
Clonality	Monoclonal
Clone No.	58G02Q76
Isotype	IgG
Label	Unconjugated
Immunogen	A synthesized peptide derived from human NLK
Format	Affinity purified monoclonal antibody supplied in PBS with 0.02% sodium azide and 50% glycerol, pH 7.3.
Storage	Shipped on wet ice. Store at -20°C. Stable for 12 months from date of receipt. Aliquoting is unnecessary for -20°C storage.
Precautions	[KD Validated] Anti-NLK Rabbit mAb [58G02Q76] is for research use only and not for use in diagnostic or therapeutic procedures.

Protein Information

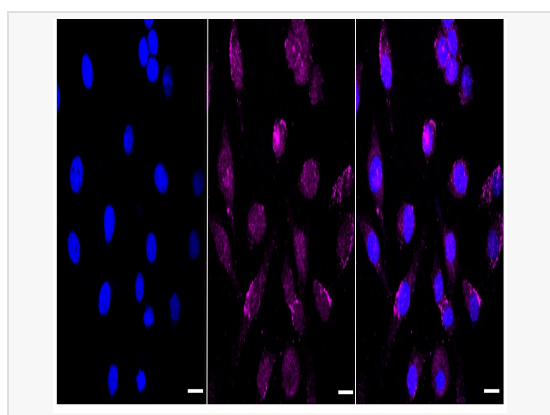
Synonyms	Nemo Like Kinase; Serine/Threonine-Protein Kinase NLK; Nemo-Like Kinase; EC 2.7.11.24; Protein LAK1; EC 2.7.11; LAK1.
Calculated MW	Calculated MW: 58 kDa, Observed MW: 58 kDa
Uniprot ID	Q9UBE8
Gene ID	51701
Background	Role in cell fate determination, required for differentiation of bone marrow stromal cells. Acts downstream of MAP3K7 and HIPK2 to negatively regulate the canonical Wnt/beta-catenin signaling pathway and the phosphorylation and destruction of the MYB transcription factor.
Cellular Location	Nucleus. Cytoplasm. Predominantly nuclear. A smaller fraction is cytoplasmic.



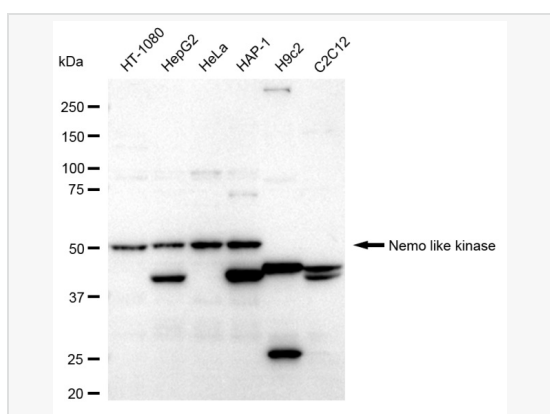
Validation of Nemo like kinase knockdown using flow cytometry. Wild-type(WT, Blue) and knockdown(KD, Green) HT-1080 cells were stained with Nemo like kinase antibody (R021058, 1:2,000) and analyzed using BD flow cytometer.



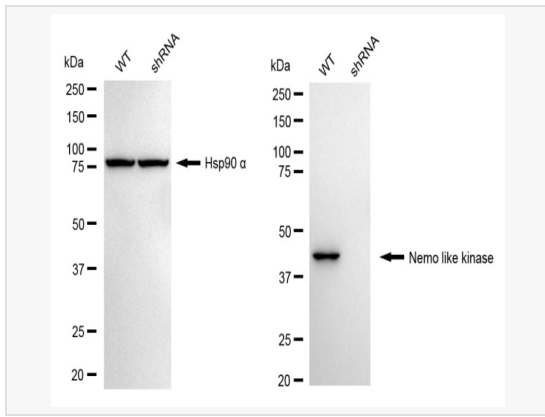
Flow cytometric analysis of Nemo like kinase expression in HeLa cells using Nemo like kinase antibody (R021058, 1:2,000). Green, isotype control; red, Nemo like kinase.



Immunocytochemical staining of HeLa cells with Nemo like kinase antibody (R021058, 1:1,000). Nuclei were stained blue with DAPI; Nemo like kinase was stained magenta with Alexa Fluor® 647. Images were taken using Leica stellaris 5. Protein abundance based on laser Intensity and smart gain: Medium. Scale bar: 20 μ m.



Western blotting analysis using Nemo like kinase antibody (R021058). Total cell lysates (30 μ g) from various cell lines were loaded and separated by SDS-PAGE. The blot was incubated with Nemo like kinase antibody (R021058, 1:5,000) and HRP-conjugated goat anti-rabbit secondary antibody (1:20,000) respectively. Image was developed using ECL Substrate Kit.



Western blotting analysis using Nemo like kinase antibody (R021058). Nemo like kinase expression in wild type (WT) and Nemo like kinase shRNA knockdown (KD) HT-1080 cells with 20 μ g of total cell lysates. Hsp90 α serves as a loading control. The blot was incubated with Nemo like kinase antibody (R021058, 1:5,000) and HRP-conjugated goat anti-rabbit secondary antibody (1:20,000) respectively. Image was developed using ECL Substrate Kit.