

## [KD Validated] Anti-MARK2 Rabbit mAb

Purified Recombinant Rabbit Monoclonal Antibody

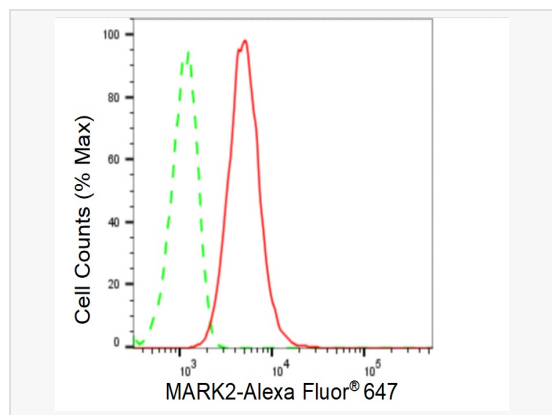
Catalog # R021056

### Product Information

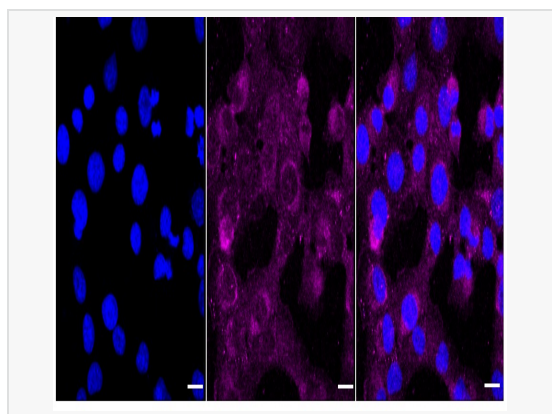
Application	WB, FC, IF (Cell)/ICC
Reactivity	Human, Mouse
Dilution	WB 1:1,000~1:5,000; FC 1:200~1:2,000; IF 1:100~1:1,000
Host	Rabbit
Clonality	Monoclonal
Clone No.	69R85P77
Isotype	IgG
Label	Unconjugated
Immunogen	A synthesized peptide derived from human MARK2
Format	Affinity purified monoclonal antibody supplied in PBS with 0.02% sodium azide and 50% glycerol, pH 7.3.
Storage	Shipped on wet ice. Store at -20°C. Stable for 12 months from date of receipt. Aliquoting is unnecessary for -20°C storage.
Precautions	[KD Validated] Anti-MARK2 Rabbit mAb [69R85P77] is for research use only and not for use in diagnostic or therapeutic procedures.

### Protein Information

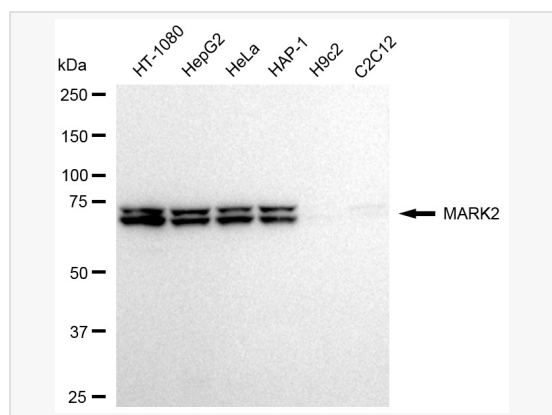
Synonyms	Microtubule Affinity Regulating Kinase 2; Par1b; MAP/Microtubule Affinity-Regulating Kinase 2; ELKL Motif Kinase 1; PAR-1B; PAR-1; EMK1; Serine/Threonine-Protein Kinase MARK2; Ser/Thr Protein Kinase PAR-1B; PAR1 Homolog B; EC 2.7.11.1; EMK-1; Serine/Threonine Protein Kinase EMK; Testicular Tissue Protein Li 117; Protein-Serine/Threonine Kinase; Serine/Threonine Kinase; ELKL Motif Kinase; PAR1 Homolog; EC 2.7.11.26; EC 2.7.11; Par-1b.
Calculated MW	Calculated MW: 88 kDa, Observed MW: 74 kDa
Uniprot ID	Q7KZI7
Gene ID	2011
Background	This gene encodes a member of the Par-1 family of serine/threonine protein kinases. The protein is an important regulator of cell polarity in epithelial and neuronal cells, and also controls the stability of microtubules through phosphorylation and inactivation of several microtubule-associated proteins. The protein localizes to cell membranes. Multiple transcript variants encoding different isoforms have been found for this gene.



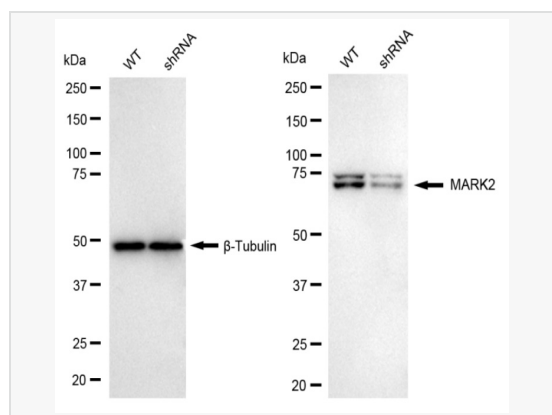
Flow cytometric analysis of MARK2 expression in HT-1080 cells using MARK2 antibody (R021056, 1:2,000). Green, isotype control; red, MARK2.



Immunocytochemical staining of HT-1080 cells with MARK2 antibody (R021056, 1:1,000). Nuclei were stained blue with DAPI; MARK2 was stained magenta with Alexa Fluor® 647. Images were taken using Leica stellaris 5. Protein abundance based on laser Intensity and smart gain: Medium. Scale bar: 20  $\mu$ m.



Western blotting analysis using MARK2 antibody (R021056). Total cell lysates (30  $\mu$ g) from various cell lines were loaded and separated by SDS-PAGE. The blot was incubated with MARK2 antibody (R021056, 1:5,000) and HRP-conjugated goat anti-rabbit secondary antibody (1:20,000) respectively. Image was developed using ECL Substrate Kit.



Western blotting analysis using MARK2 antibody (R021056). MARK2 expression in wild type (WT) and MARK2 shRNA knockdown (KD) HeLa cells with 20  $\mu$ g of total cell lysates.  $\beta$ -Tubulin serves as a loading control. The blot was incubated with MARK2 antibody (R021056, 1:5,000) and HRP-conjugated goat anti-rabbit secondary antibody (1:20,000) respectively. Image was developed using ECL Substrate Kit.