

[KD Validated] Anti-LYN Rabbit mAb

Purified Recombinant Rabbit Monoclonal Antibody

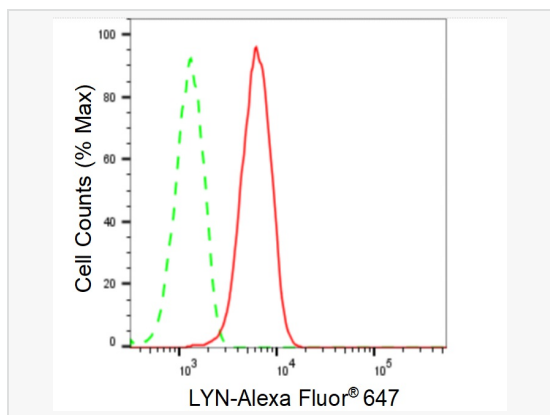
Catalog # R021053

Product Information

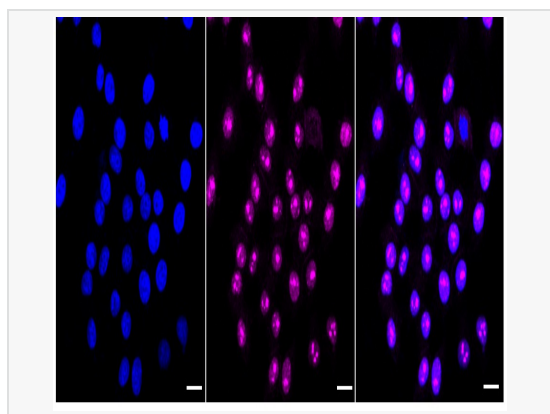
Application	WB, FC, IF (Cell)/ICC
Reactivity	Human, Mouse, Rat
Dilution	WB 1:1,000~1:5,000; FC 1:200~1:2,000; IF 1:100~1:1,000
Host	Rabbit
Clonality	Monoclonal
Clone No.	64R85N39
Isotype	IgG
Label	Unconjugated
Immunogen	A synthesized peptide derived from human Lyn
Format	Affinity purified monoclonal antibody supplied in PBS with 0.02% sodium azide and 50% glycerol, pH 7.3.
Storage	Shipped on wet ice. Store at -20°C. Stable for 12 months from date of receipt. Aliquoting is unnecessary for -20°C storage.
Precautions	[KD Validated] Anti-LYN Rabbit mAb [64R85N39] is for research use only and not for use in diagnostic or therapeutic procedures.

Protein Information

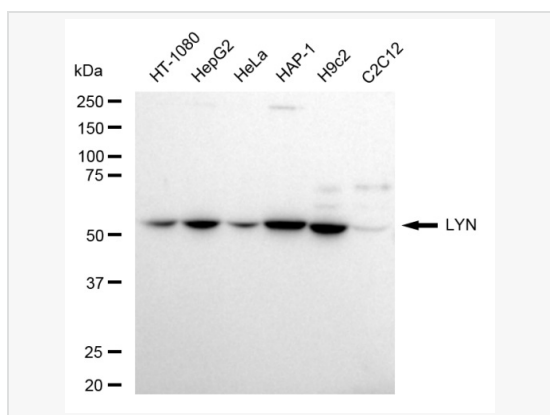
Synonyms	LYN Proto-Oncogene, Src Family Tyrosine Kinase; JTK8; V-Yes-1 Yamaguchi Sarcoma Viral Related Oncogene Homolog; Lck/Yes-Related Novel Protein Tyrosine Kinase; Tyrosine-Protein Kinase Lyn; EC 2.7.10.2; P53Lyn; P56Lyn; EC 2.7.10; SAIDV.
Calculated MW	Calculated MW: 59 kDa, Observed MW: 56 kDa
Uniprot ID	P07948
Gene ID	4067
Background	Lyn a tyrosine kinase of the Src family that plays a role in B cell antigen-receptor signaling.



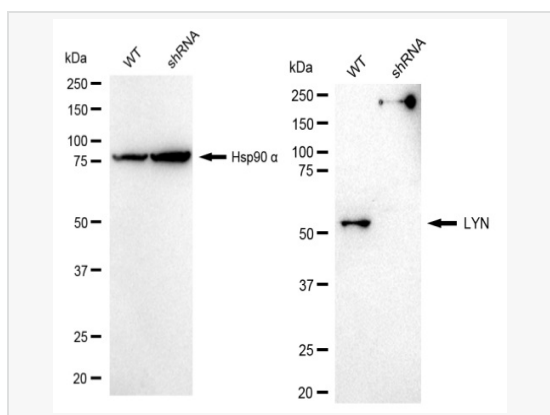
Flow cytometric analysis of LYN expression in HepG2 cells using LYN antibody (R021053, 1:2,000). Green, isotype control; red, LYN.



Immunocytochemical staining of HepG2 cells with LYN antibody (R021053, 1:1,000). Nuclei were stained blue with DAPI; LYN was stained magenta with Alexa Fluor® 647. Images were taken using Leica stellaris 5. Protein abundance based on laser Intensity and smart gain: High. Scale bar: 20 µm.



Western blotting analysis using LYN antibody (R021053). Total cell lysates (30 µg) from various cell lines were loaded and separated by SDS-PAGE. The blot was incubated with LYN antibody (R021053, 1:5,000) and HRP-conjugated goat anti-rabbit secondary antibody (1:20,000) respectively. Image was developed using ECL Substrate Kit.



Western blotting analysis using LYN antibody (R021053). LYN expression in wild type (WT) and LYN shRNA knockdown (KD) HeLa cells with 30 µg of total cell lysates. Hsp90 α serves as a loading control. The blot was incubated with LYN antibody (R021053, 1:5,000) and HRP-conjugated goat anti-rabbit secondary antibody (1:20,000) respectively. Image was developed using ECL Substrate Kit.