

[KD Validated] Anti-PSIP1 Rabbit mAb

Purified Recombinant Rabbit Monoclonal Antibody

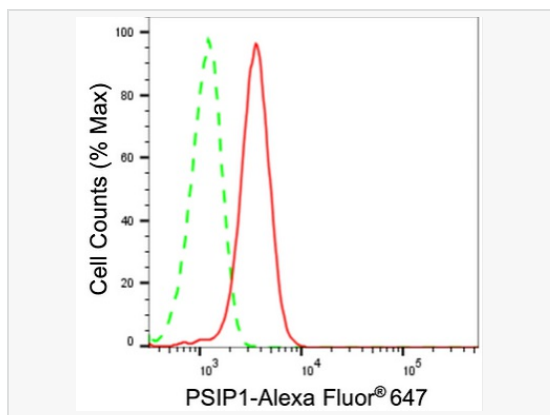
Catalog # R021045

Product Information

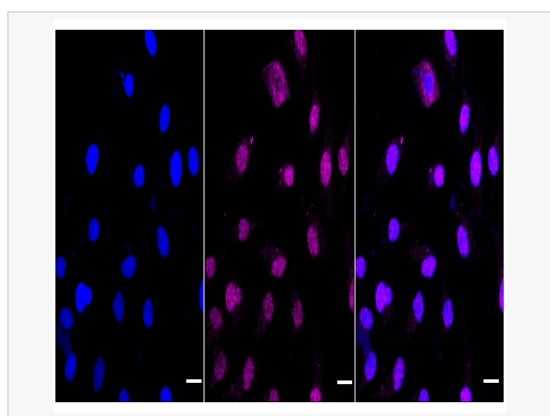
Application	WB, FC, IF (Cell)/ICC
Reactivity	Human, Mouse, Rat
Dilution	WB 1:1,000~1:5,000; FC 1:200~1:2,000; IF 1:100~1:1,000
Host	Rabbit
Clonality	Monoclonal
Clone No.	84B60L54
Isotype	IgG
Label	Unconjugated
Immunogen	A synthesized peptide derived from human PSIP1 / LEDGF
Format	Affinity purified monoclonal antibody supplied in PBS with 0.02% sodium azide and 50% glycerol, pH 7.3.
Storage	Shipped on wet ice. Store at -20°C. Stable for 12 months from date of receipt. Aliquoting is unnecessary for -20°C storage.
Precautions	[KD Validated] Anti-PSIP1 Rabbit mAb [84B60L54] is for research use only and not for use in diagnostic or therapeutic procedures.

Protein Information

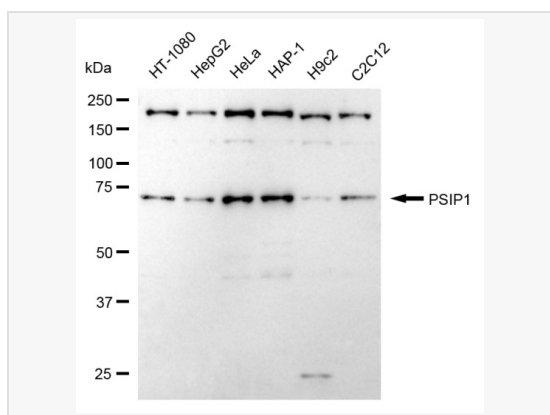
Synonyms	PC4 And SRSF1 Interacting Protein 1; LEDGF; DFS70; Lens Epithelium-Derived Growth Factor; PSIP2; P52; P75; PC4 And SFRS1 Interacting Protein 1; Dense Fine Speckles 70 kDa Protein; PC4 And SFRS1-Interacting Protein; CLL-Associated Antigen KW-7; PC4 And SFRS1 Interacting Protein 2; Transcriptional Coactivator P52/P75; Transcriptional Coactivator P75/P52; DFS 70; PAIP.
Calculated MW	Calculated MW: 60 kDa, Observed MW: 75 kDa
Uniprot ID	O75475
Gene ID	11168



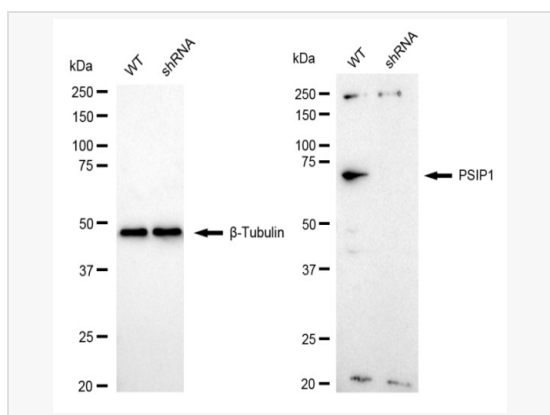
Flow cytometric analysis of PSIP1 expression in HeLa cells using PSIP1 antibody (R021045, 1:2,000). Green, isotype control; red, PSIP1.



Immunocytochemical staining of HeLa cells with PSIP1 antibody (R021045, 1:1,000). Nuclei were stained blue with DAPI; PSIP1 was stained magenta with Alexa Fluor® 647. Images were taken using Leica stellaris 5. Protein abundance based on laser Intensity and smart gain: Medium. Scale bar: 20 µm.



Western blotting analysis using PSIP1 antibody (R021045). Total cell lysates (30 µg) from various cell lines were loaded and separated by SDS-PAGE. The blot was incubated with PSIP1 antibody (R021045, 1:5,000) and HRP-conjugated goat anti-rabbit secondary antibody (1:20,000) respectively. Image was developed using ECL Substrate Kit.



Western blotting analysis using PSIP1 antibody (R021045). PSIP1 expression in wild-type (WT) and PSIP1 shRNA knockdown (KD) HeLa cells with 20 µg of total cell lysates. β-Tubulin serves as a loading control. The blot was incubated with PSIP1 antibody (R021045, 1:5,000) and HRP-conjugated goat anti-rabbit secondary antibody (1:20,000) respectively. Image was developed using ECL Substrate Kit.