

[KD Validated] Anti-RALBP1 Rabbit mAb

Purified Recombinant Rabbit Monoclonal Antibody

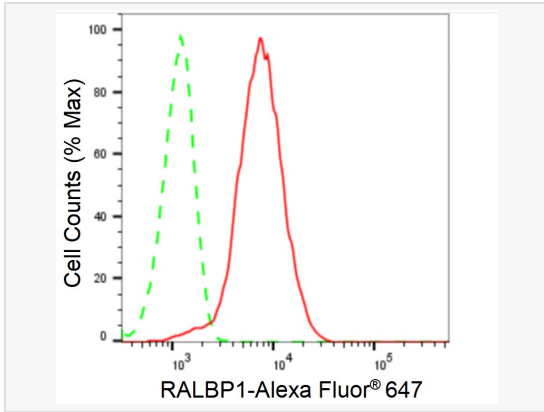
Catalog # R021042

Product Information

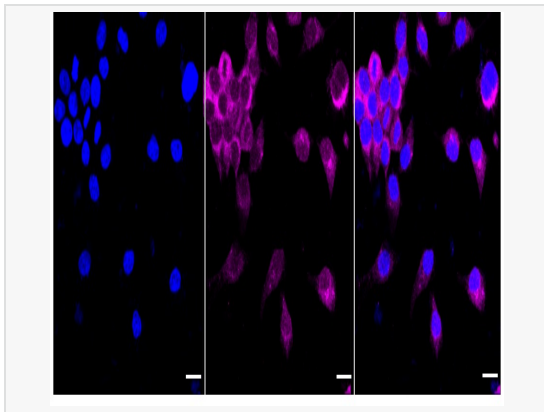
Application	WB, FC, IF (Cell)/ICC
Reactivity	Human, Mouse, Rat
Dilution	WB 1:2000~1:10,000; FC 1:200~1:2,000; IF 1:100~1:1,000
Host	Rabbit
Clonality	Monoclonal
Clone No.	56N94H21
Isotype	IgG
Label	Unconjugated
Immunogen	A synthesized peptide derived from human RALBP1
Format	Affinity purified monoclonal antibody supplied in PBS with 0.02% sodium azide and 50% glycerol, pH 7.3.
Storage	Shipped on wet ice. Store at -20°C. Stable for 12 months from date of receipt. Aliquoting is unnecessary for -20°C storage.
Precautions	[KD Validated] Anti-RALBP1 Rabbit mAb [56N94H21] is for research use only and not for use in diagnostic or therapeutic procedures.

Protein Information

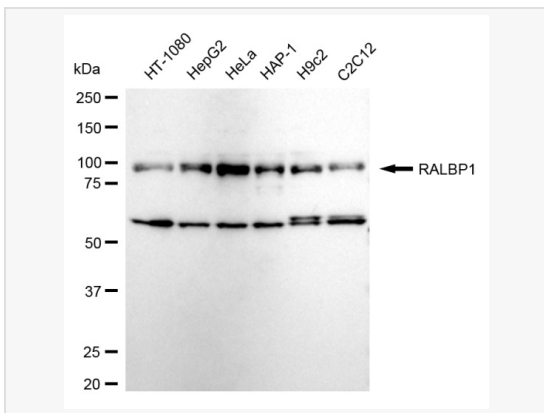
Synonyms	RalA Binding Protein 1; RLIP76; RIP1; Dinitrophenyl S-Glutathione ATPase; 76 kDa Ral-Interacting Protein; Ral-Interacting Protein 1; RalA-Binding Protein 1; DNP-SG ATPase; RLIP1; RIP; EC 7.6.2.2; EC 7.6.2.3; RalBP1; RLIP.
Calculated MW	Calculated MW: 76 kDa, Observed MW: 95 kDa
Uniprot ID	Q15311
Gene ID	10928
Background	RALBP1 plays a role in receptor-mediated endocytosis and is a downstream effector of the small GTP-binding protein RAL (see RALA; MIM 179550). Small G proteins, such as RAL, have GDP-bound inactive and GTP-bound active forms, which shift from the inactive to the active state through the action of RALGDS (MIM 601619), which in turn is activated by RAS (see HRAS; MIM 190020) (summary by Feig, 2003 [PubMed 12888294]).



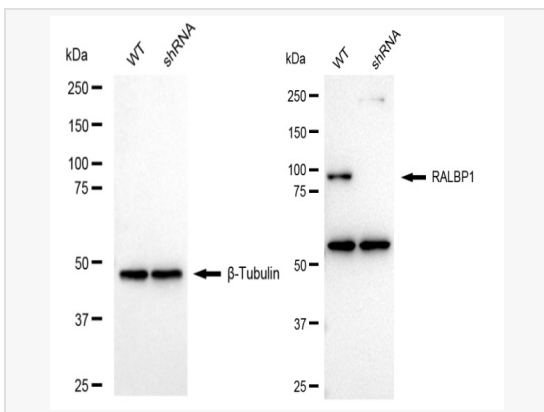
Flow cytometric analysis of RALBP1 expression in HeLa cells using RALBP1 antibody (R021042, 1:2,000). Green, isotype control; red, RALBP1.



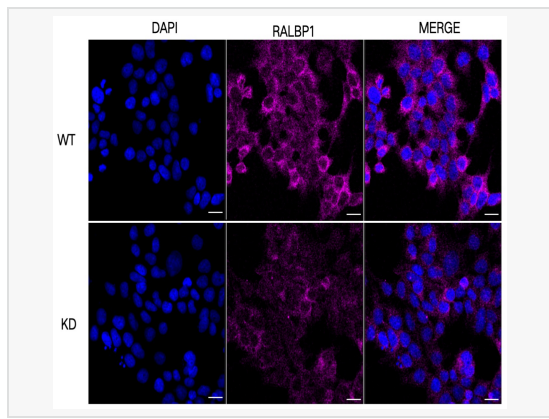
Immunocytochemical staining of HeLa cells with RALBP1 antibody (R021042, 1:1,000). Nuclei were stained blue with DAPI; RALBP1 was stained magenta with Alexa Fluor® 647. Images were taken using Leica stellaris 5. Protein abundance based on laser Intensity and smart gain: Medium. Scale bar: 20 µm.



Western blotting analysis using RALBP1 antibody (R021042). Total cell lysates (30 µg) from various cell lines were loaded and separated by SDS-PAGE. The blot was incubated with RALBP1 antibody (R021042, 1:10,000) and HRP-conjugated goat anti-rabbit secondary antibody (1:20,000) respectively. Image was developed using ECL Substrate Kit.



Western blotting analysis using RALBP1 antibody (R021042). RALBP1 expression in wild type (WT) and RALBP1 shRNA knockdown (KD) HeLa cells with 20 µg of total cell lysates. β-Tubulin serves as a loading control. The blot was incubated with RALBP1 antibody (R021042, 1:10,000) and HRP-conjugated goat anti-rabbit secondary antibody (1:20,000) respectively. Image was developed using ECL Substrate Kit.



Immunocytochemical staining of HeLa cells using RALBP1 antibody (R021042, 1:1,000), Top panel: wild-type (WT); Bottom panel: RALBP1 shRNA knockdown (KD). Nuclei were stained blue with DAPI; Acyl-CoA dehydrogenase short chain was stained magenta with Alexa Fluor® 647. Scale bar, 20 μ m.