

[KD Validated] Anti-PXN Rabbit mAb

Purified Recombinant Rabbit Monoclonal Antibody

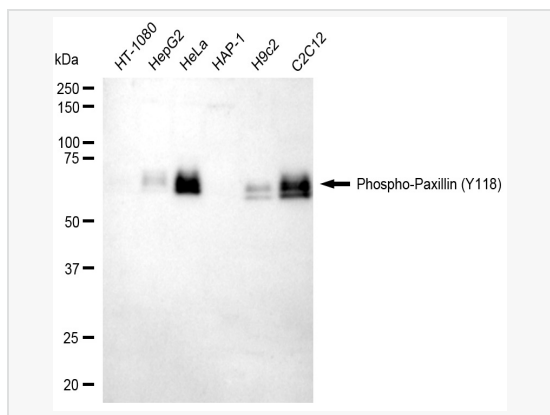
Catalog # R021040

Product Information

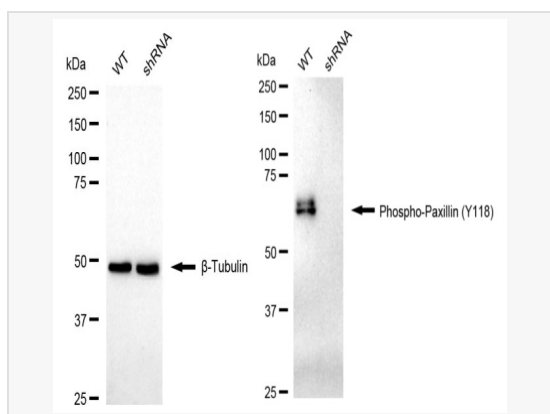
Application	WB
Reactivity	Human, Mouse, Rat
Dilution	WB 1:1,000~1:5,000
Host	Rabbit
Clonality	Monoclonal
Clone No.	54P86S13
Isotype	IgG
Label	Unconjugated
Immunogen	A synthesized peptide derived from human Phospho-Paxillin (Y118)
Format	Affinity purified monoclonal antibody supplied in PBS with 0.02% sodium azide and 50% glycerol, pH 7.3.
Storage	Shipped on wet ice. Store at -20°C. Stable for 12 months from date of receipt. Aliquoting is unnecessary for -20°C storage.
Precautions	[KD Validated] Anti-PXN Rabbit mAb [54P86S13] is for research use only and not for use in diagnostic or therapeutic procedures.

Protein Information

Synonyms	Paxillin; Testicular Tissue Protein Li 134.
Calculated MW	Calculated MW: 65 kDa, Observed MW: 68 kDa
Uniprot ID	P49023
Gene ID	5829
Background	Cytoskeletal protein involved in actin-membrane attachment at sites of cell adhesion to the extracellular matrix (focal adhesion). PXN is a multi-domain cytoskeletal protein that localizes primarily to focal adhesion sites to the extracellular matrix. Phosphorylated by focal adhesion kinase (FAK) and is a component of integrin signaling. Its phosphorylation provides docking sites for recruitment of signaling molecules to focal adhesions.



Western blotting analysis using Phospho-Paxillin (Y118) antibody (R021040). Total cell lysates (30 μ g) from various cell lines were loaded and separated by SDS-PAGE. The blot was incubated with Phospho-Paxillin (Y118) antibody (R021040, 1:5,000) and HRP-conjugated goat anti-rabbit secondary antibody (1:20,000) respectively. Image was developed using ECL Substrate Kit.



Western blotting analysis using Phospho-Paxillin (Y118) antibody (R021040). Phospho-Paxillin (Y118) expression in wild type (WT) and Phospho-Paxillin (Y118) shRNA knockdown (KD) HeLa cells with 20 μ g of total cell lysates. β -Tubulin serves as a loading control. The blot was incubated with Phospho-Paxillin (Y118) antibody (R021040, 1:5,000) and HRP-conjugated goat anti-rabbit secondary antibody (1:20,000) respectively. Image was developed using ECL Substrate Kit.