

## [KD Validated] Anti-RELB Rabbit mAb

Purified Recombinant Rabbit Monoclonal Antibody

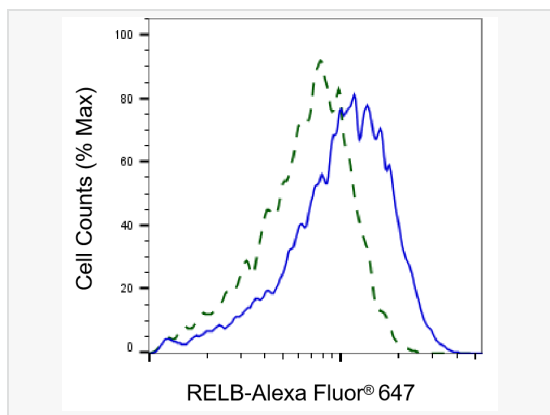
Catalog # R021037

### Product Information

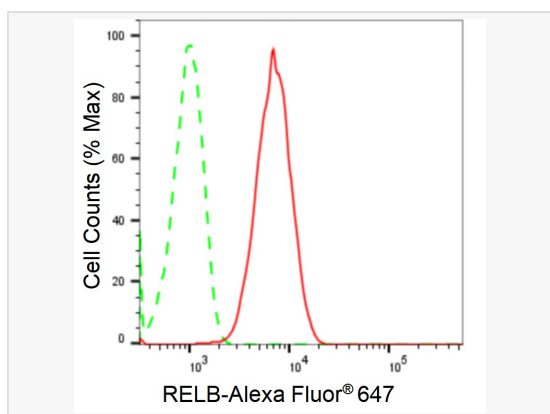
Application	WB, FC, IF (Cell)/ICC
Reactivity	Human, Mouse, Rat
Dilution	WB 1:1,000~1:5,000; FC 1:200~1:2,000; IF 1:100~1:1,000
Host	Rabbit
Clonality	Monoclonal
Clone No.	50D62M31
Isotype	IgG
Label	Unconjugated
Immunogen	A synthesized peptide derived from human RelB
Format	Affinity purified monoclonal antibody supplied in PBS with 0.02% sodium azide and 50% glycerol, pH 7.3.
Storage	Shipped on wet ice. Store at -20°C. Stable for 12 months from date of receipt. Aliquoting is unnecessary for -20°C storage.
Precautions	[KD Validated] Anti-RELB Rabbit mAb [50D62M31] is for research use only and not for use in diagnostic or therapeutic procedures.

### Protein Information

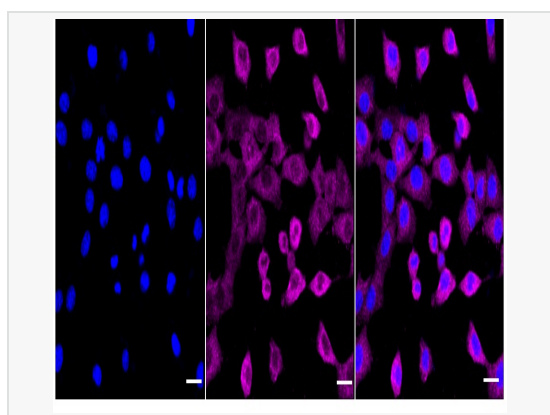
Synonyms	RELB Proto-Oncogene, NF- $\kappa$ B Subunit; REL-B; V-Rel Avian Reticuloendotheliosis Viral Oncogene Homolog B (Nuclear Factor Of Kappa Light Polypeptide Gene Enhancer In B-Cells 3); Transcription Factor RelB ; V-Rel Reticuloendotheliosis Viral Oncogene Homolog B, Nuclear Factor Of Kappa Light Polypeptide Gene Enhancer In B-Cells 3; I-REL; IMD53; I-Rel; IREL.
Calculated MW	Calculated MW: 62 kDa, Observed MW: 70 kDa
Uniprot ID	Q01201
Gene ID	5971
Background	Transcription factors of the nuclear factor $\kappa$ B (NF- $\kappa$ B)/Rel family play a pivotal role in inflammatory and immune responses. Involved in many biological processes such as inflammation, immunity, differentiation, cell growth, tumorigenesis and apoptosis.



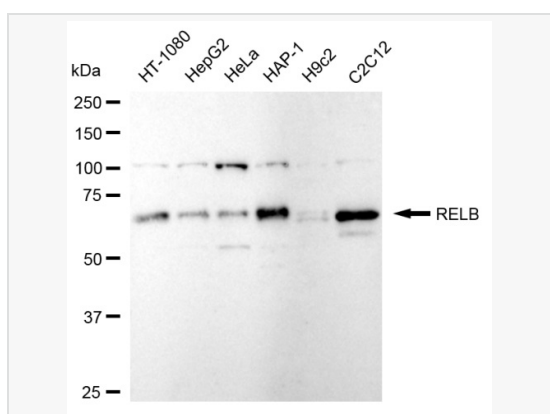
Validation of RELB knockdown using flow cytometry. Wild-type(WT, Blue) and knockdown(KD, Green) HT-1080 cells were stained with RELB antibody (R021037, 1:2,000) and analyzed using BD flow cytometer.



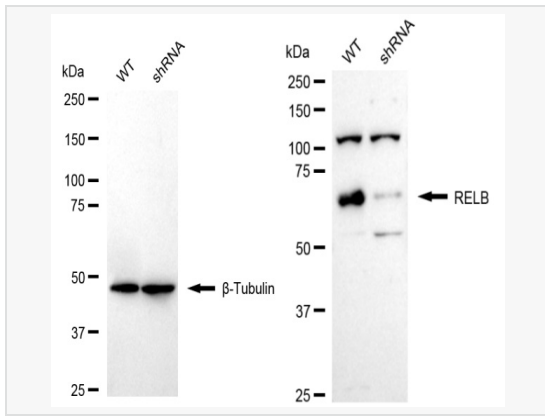
Flow cytometric analysis of RELB expression in C2C12 cells using RELB antibody (R021037, 1:2,000). Green, isotype control; red, RELB.



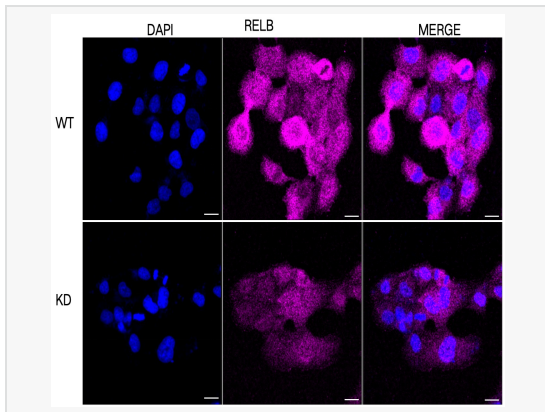
Immunocytochemical staining of C2C12 cells with RELB antibody (R021037, 1:1,000). Nuclei were stained blue with DAPI; RELB was stained magenta with Alexa Fluor® 647. Images were taken using Leica stellaris 5. Protein abundance based on laser Intensity and smart gain: Medium. Scale bar: 20  $\mu$ m.



Western blotting analysis using RELB antibody (R021037). Total cell lysates (30  $\mu$ g) from various cell lines were loaded and separated by SDS-PAGE. The blot was incubated with RELB antibody (R021037, 1:5,000) and HRP-conjugated goat anti-rabbit secondary antibody (1:20,000) respectively. Image was developed using ECL Substrate Kit.



Western blotting analysis using RELB antibody (R021037). RELB expression in wild type (WT) and RELB shRNA knockdown (KD) HT-1080 cells with 20  $\mu$ g of total cell lysates.  $\beta$ -Tubulin serves as a loading control. The blot was incubated with RELB antibody (R021037, 1:5,000) and HRP-conjugated goat anti-rabbit secondary antibody (1:20,000) respectively. Image was developed using ECL Substrate Kit.



Immunocytochemical staining of HT-1080 cells using RELB antibody (R021037, 1:1,000), Top panel: wild-type (WT); Bottom panel: RELB shRNA knockdown (KD). Nuclei were stained blue with DAPI; RELB was stained magenta with Alexa Fluor® 647. Scale bar, 20  $\mu$ m.