

[KD Validated] Anti-PIK3C3 Rabbit mAb

Purified Recombinant Rabbit Monoclonal Antibody

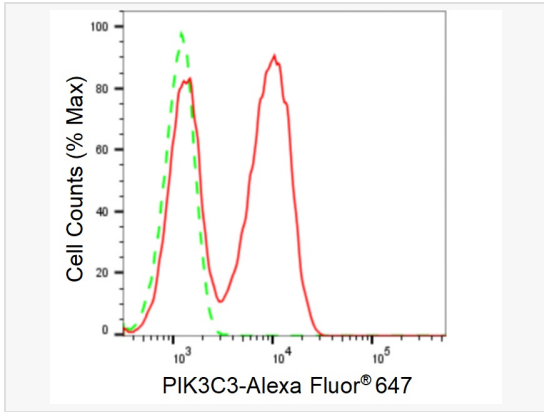
Catalog # R021018

Product Information

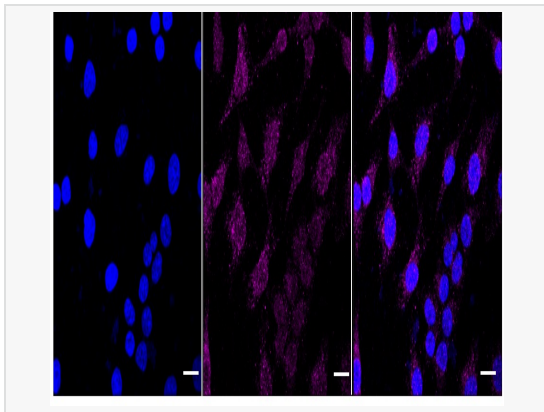
Application	WB, FC, IF (Cell)/ICC
Reactivity	Human, Mouse
Dilution	WB 1:1,000~1:5,000; FC 1:200~1:2,000; IF 1:100~1:1,000
Host	Rabbit
Clonality	Monoclonal
Clone No.	61R86G49
Isotype	IgG
Label	Unconjugated
Immunogen	A synthesized peptide derived from human PI 3 Kinase Class 3
Format	Affinity purified monoclonal antibody supplied in PBS with 0.02% sodium azide and 50% glycerol, pH 7.3.
Storage	Shipped on wet ice. Store at -20°C. Stable for 12 months from date of receipt. Aliquoting is unnecessary for -20°C storage.
Precautions	[KD Validated] Anti-PIK3C3 Rabbit mAb [61R86G49] is for research use only and not for use in diagnostic or therapeutic procedures.

Protein Information

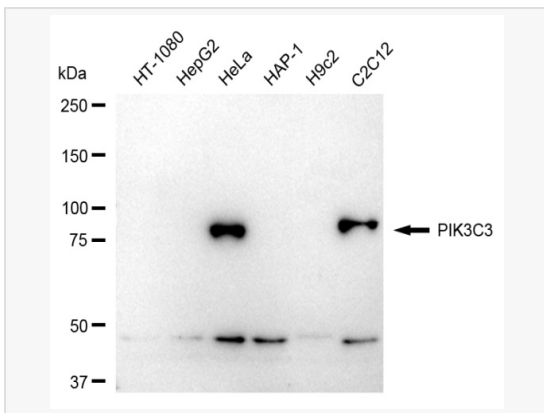
Synonyms	Phosphatidylinositol 3-Kinase Catalytic Subunit Type 3; HVps34; Vps34; Phosphatidylinositol 3-Kinase P100 Subunit; Vacuolar Protein Sorting 34 Homolog; Phosphoinositide-3-Kinase, Class 3; PtdIns-3-Kinase Type 3; PI3-Kinase Type 3; EC 2.7.1.137; PI3K Type 3; Phosphatidylinositol 3-Kinase, Catalytic Subunit Type 3; Phosphoinositide-3-Kinase Class 3; EC 2.7.1; VPS34.
Calculated MW	Calculated MW: 102 kDa, Observed MW: 100 kDa
Uniprot ID	Q8NEB9
Gene ID	5289
Background	Catalytic subunit of the PI3K complex that mediates formation of phosphatidylinositol 3-phosphate; different complex forms are believed to play a role in multiple membrane trafficking pathways: PI3KC3-C1 is involved in initiation of autophagosomes and PI3KC3-C2 in maturation of autophagosomes and endocytosis
Cellular Location	Midbody.
Tissue Location	Ubiquitously expressed, with a highest expression in skeletal muscle.



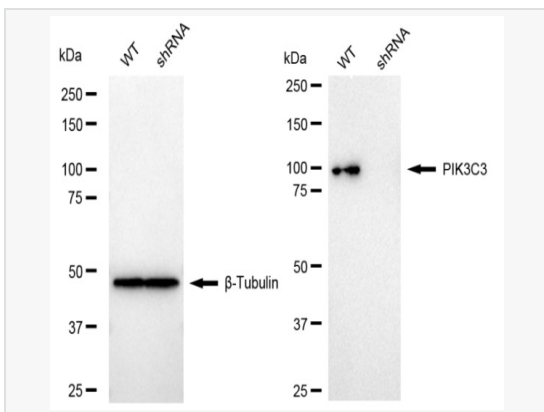
Flow cytometric analysis of PIK3C3 expression in HeLa cells using PIK3C3 antibody (R021018, 1:2,000). Green, isotype control; red, PIK3C3.



Immunocytochemical staining of HeLa cells with PIK3C3 antibody (R021018, 1:1,000). Nuclei were stained blue with DAPI; PIK3C3 was stained magenta with Alexa Fluor® 647. Images were taken using Leica stellaris 5. Protein abundance based on laser Intensity and smart gain: Medium. Scale bar: 20 µm.



Western blotting analysis using PIK3C3 antibody (R021018). Total cell lysates (30 µg) from various cell lines were loaded and separated by SDS-PAGE. The blot was incubated with PIK3C3 antibody (R021018, 1:5,000) and HRP-conjugated goat anti-rabbit secondary antibody (1:20,000) respectively. Image was developed using ECL Substrate Kit.



Western blotting analysis using PIK3C3 antibody (R021018). PIK3C3 expression in wild type (WT) and PIK3C3 shRNA knockdown (KD) HeLa cells with 20 µg of total cell lysates. β-Tubulin serves as a loading control. The blot was incubated with PIK3C3 antibody (R021018, 1:5,000) and HRP-conjugated goat anti-rabbit secondary antibody (1:20,000) respectively. Image was developed using ECL Substrate Kit.