

[KD Validated] Anti-PPP2R5E Rabbit mAb

Purified Recombinant Rabbit Monoclonal Antibody

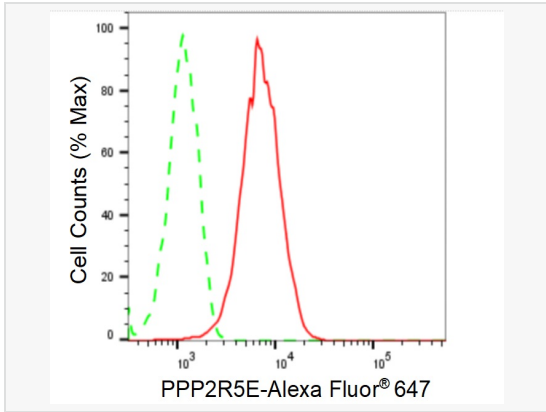
Catalog # R021013

Product Information

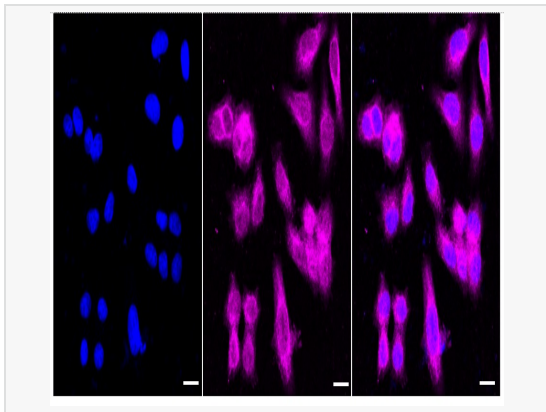
Application	WB, FC, IF (Cell)/ICC
Reactivity	Human, Mouse, Rat
Dilution	WB 1:1,000~1:5,000; FC 1:200~1:2,000; IF 1:100~1:1,000
Host	Rabbit
Clonality	Monoclonal
Clone No.	95A01L27
Isotype	IgG
Label	Unconjugated
Immunogen	A synthesized peptide derived from human PPP2R5E
Format	Affinity purified monoclonal antibody supplied in PBS with 0.02% sodium azide and 50% glycerol, pH 7.3.
Storage	Shipped on wet ice. Store at -20°C. Stable for 12 months from date of receipt. Aliquoting is unnecessary for -20°C storage.
Precautions	[KD Validated] Anti-PPP2R5E Rabbit mAb [95A01L27] is for research use only and not for use in diagnostic or therapeutic procedures.

Protein Information

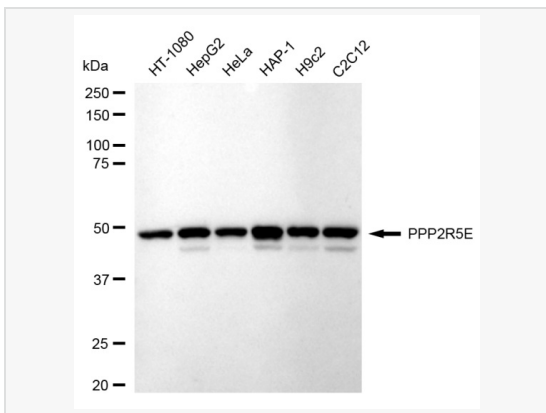
Synonyms	Protein Phosphatase 2 Regulatory Subunit B'Epsilon; B56epsilon; B56E; Serine/Threonine-Protein Phosphatase 2A 56 kDa Regulatory Subunit Epsilon Isoform; Serine/Threonine Protein Phosphatase 2A, 56 kDa Regulatory Subunit, Epsilon; Protein Phosphatase 2, Regulatory Subunit B (B56), Epsilon Isoform; Protein Phosphatase 2 Regulatory Subunit B', Epsilon; PP2A B Subunit Isoform PR61-Epsilon; PP2A B Subunit Isoform B56-Epsilon; PP2A B Subunit Isoform B'-Epsilon; PP2A B Subunit Isoform R5-Epsilon; PP2A, B Subunit, PR61 Epsilon; PP2A, B Subunit, B56 Epsilon; PP2A, B Subunit, B' Epsilon; PP2A, B Subunit, R5 Epsilon.
Calculated MW	Calculated MW: 55 kDa, Observed MW: 50 kDa
Uniprot ID	Q16537
Gene ID	5529
Background	The B regulatory subunit might modulate substrate selectivity and catalytic activity, and also might direct the localization of the catalytic enzyme to a particular subcellular compartment.
Cellular Location	Cytoplasm.



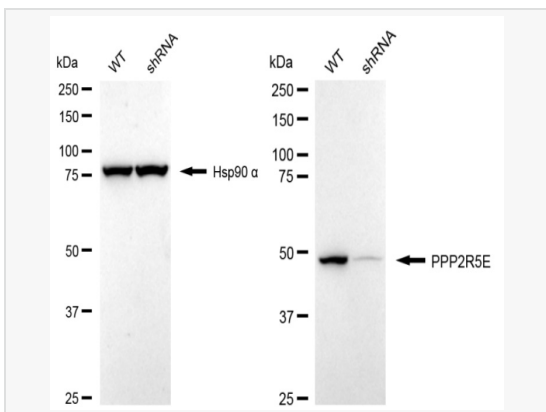
Flow cytometric analysis of PPP2R5E expression in HepG2 cells using PPP2R5E antibody (R021013, 1:2,000). Green, isotype control; red, PPP2R5E.



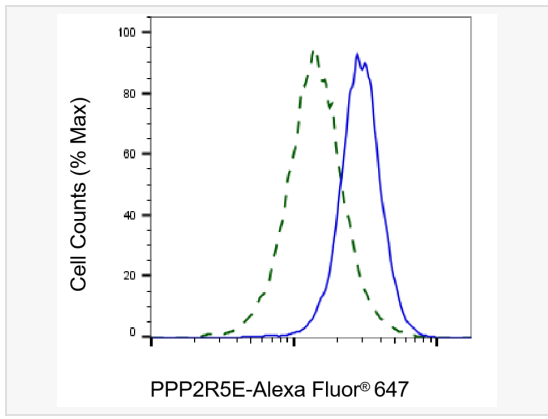
Immunocytochemical staining of HepG2 cells with PPP2R5E antibody (R021013, 1:1,000). Nuclei were stained blue with DAPI; PPP2R5E was stained magenta with Alexa Fluor® 647. Images were taken using Leica stellaris 5. Protein abundance based on laser Intensity and smart gain: Medium. Scale bar: 20 μ m.



Western blotting analysis using PPP2R5E antibody (R021013). Total cell lysates (30 μ g) from various cell lines were loaded and separated by SDS-PAGE. The blot was incubated with PPP2R5E antibody (R021013, 1:5,000) and HRP-conjugated goat anti-rabbit secondary antibody (1:20,000) respectively. Image was developed using ECL Substrate Kit



Western blotting analysis using PPP2R5E antibody (R021013). PPP2R5E expression in wild type (WT) and PPP2R5E shRNA knockdown (KD) HeLa cells with 20 μ g of total cell lysates. Hsp90 α serves as a loading control. The blot was incubated with PPP2R5E antibody (R021013, 1:5,000) and HRP-conjugated goat anti-rabbit secondary antibody (1:20,000) respectively. Image was developed using ECL Substrate Kit.



Validation of PPP2R5E knockdown using flow cytometry. Wild-type(WT, Blue) and knockdown(KD, Green) HeLa cells were stained with PPP2R5E antibody (R021013, 1:2,000) and analyzed using BD flow cytometer.