

[KD Validated] Anti-PRKCSH Rabbit mAb

Purified Recombinant Rabbit Monoclonal Antibody

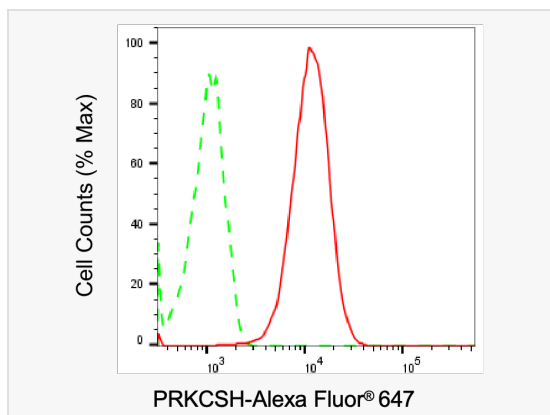
Catalog # R021001

Product Information

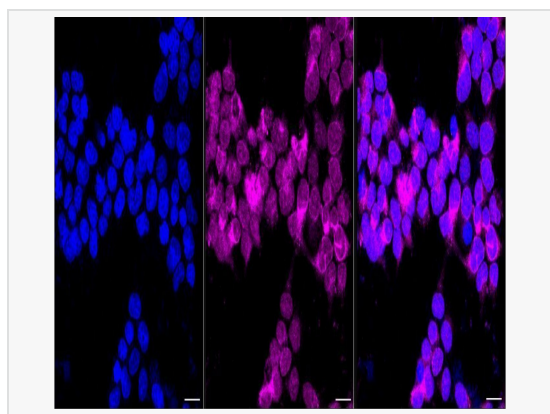
Application	WB, FC, IF (Cell)/ICC
Reactivity	Human
Dilution	WB 1:1,000~1:5,000; FC 1:200~1:2,000; IF 1:100~1:1,000
Host	Rabbit
Clonality	Monoclonal
Clone No.	57A94F85
Isotype	IgG
Label	Unconjugated
Immunogen	A synthesized peptide derived from human GLU2B
Format	Affinity purified monoclonal antibody supplied in PBS with 0.02% sodium azide and 50% glycerol, pH 7.3.
Storage	Shipped on wet ice. Store at -20°C. Stable for 12 months from date of receipt. Aliquoting is unnecessary for -20°C storage.
Precautions	[KD Validated] Anti-PRKCSH Rabbit mAb [57A94F85] is for research use only and not for use in diagnostic or therapeutic procedures.

Protein Information

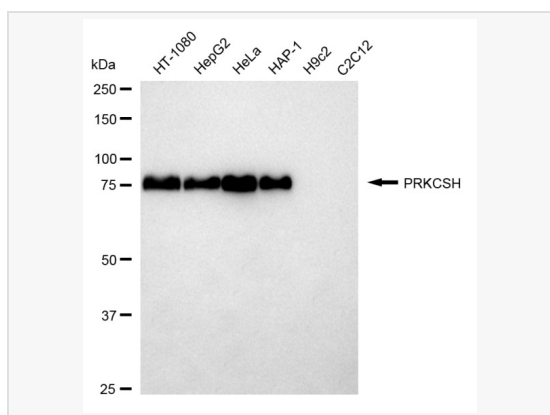
Synonyms	PRKCSH; Protein Kinase C Substrate 80K-H; Glucosidase 2 Subunit Beta; VASAP-60; PKCSH; G19P1; GIIB; Protein Kinase C Substrate 60.1 KDa Protein Heavy Chain; Advanced Glycation End-Product Receptor 2; Glucosidase II Subunit Beta; Hepatocystin; GluIIbeta; GIIBeta; AGE-R2; 80K-H; PCLD; PLD1; Protein Kinase C Substrate, 80 Kda Protein; Glucosidase II Beta Subuni; Polycystic Liver Disease; AGE-Binding Receptor 2; 80K-H Protein; PCLD1.
Calculated MW	Calculated MW: 59 kDa, Observed MW: 80 kDa
Uniprot ID	P14314
Gene ID	5589
Background	Regulatory subunit of glucosidase II.
Cellular Location	Endoplasmic reticulum.



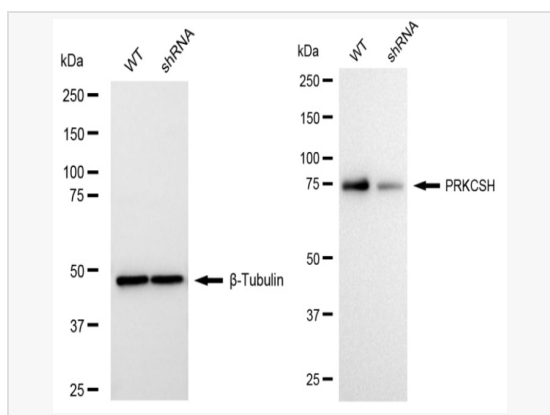
Flow cytometric analysis of PRKCSH expression in HeLa cells using PRKCSH antibody (R021001, 1:2,000). Green, isotype control; red, PRKCSH.



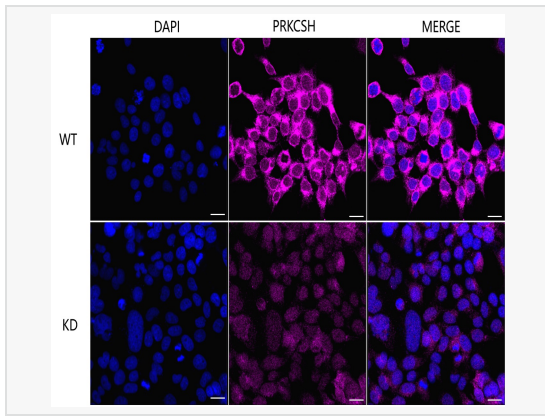
Immunocytochemical staining of HeLa cells with PRKCSH antibody (R021001, 1:1,000). Nuclei were stained blue with DAPI; PRKCSH was stained magenta with Alexa Fluor® 647. Images were taken using Leica stellaris 5. Protein abundance based on laser Intensity and smart gain: Medium. Scale bar, 20 µm.



Western blotting analysis using PRKCSH antibody (R021001). Total cell lysates (30 µg) from various cell lines were loaded and separated by SDS-PAGE. The blot was incubated with PRKCSH antibody (R021001, 1:5,000) and HRP-conjugated goat anti-rabbit secondary antibody (1:20,000) respectively. Image was developed using ECL Substrate Kit.



Western blotting analysis using PRKCSH antibody (R021001). PRKCSH expression in wild type (WT) and PRKCSH shRNA knockdown (KD) HeLa cells with 20 µg of total cell lysates. β-Tubulin serves as a loading control. The blot was incubated with PRKCSH antibody (R021001, 1:5,000) and HRP-conjugated goat anti-rabbit secondary antibody (1:20,000) respectively. Image was developed using ECL Substrate Kit.



Immunocytochemical staining of HeLa cells using PRKCSH antibody (R021001, 1:1,000), Top panel: wild-type (WT); Bottom panel: PRKCSH shRNA knockdown (KD). Nuclei were stained blue with DAPI; PRKCSH was stained magenta with Alexa Fluor® 647. Scale bar, 20 μ m. Permeabilization: Triton.