

[KD Validated] Anti-PPA1 Rabbit mAb

Purified Recombinant Rabbit Monoclonal Antibody

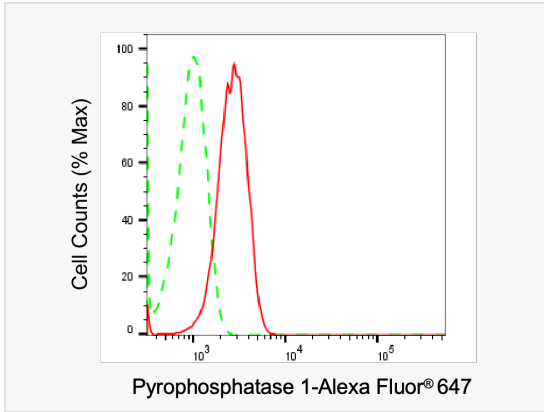
Catalog # R020998

Product Information

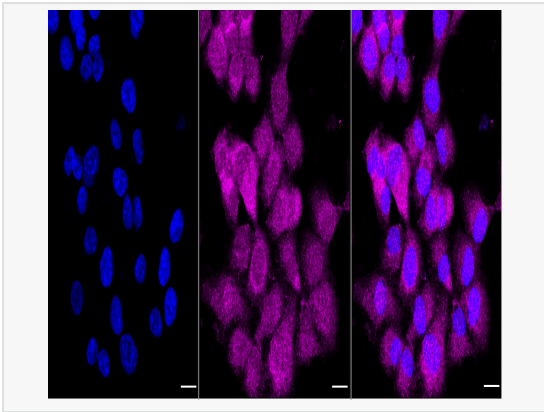
Application	WB, FC, IF (Cell)/ICC
Reactivity	Human, Mouse, Rat
Dilution	WB 1:1,000~1:5,000; FC 1:200~1:2,000; IF 1:100~1:1,000
Host	Rabbit
Clonality	Monoclonal
Clone No.	38O92N05
Isotype	IgG
Label	Unconjugated
Immunogen	A synthesized peptide derived from human Pyrophosphatase 1
Format	Affinity purified monoclonal antibody supplied in PBS with 0.02% sodium azide and 50% glycerol, pH 7.3.
Storage	Shipped on wet ice. Store at -20°C. Stable for 12 months from date of receipt. Aliquoting is unnecessary for -20°C storage.
Precautions	[KD Validated] Anti-PPA1 Rabbit mAb [38O92N05] is for research use only and not for use in diagnostic or therapeutic procedures.

Protein Information

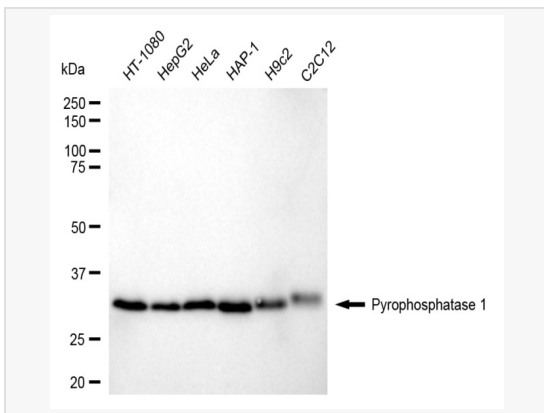
Synonyms	PPA1; Inorganic Pyrophosphatase 1; Pyrophosphate Phospho-Hydrolase; SID6-8061; Ppase; PP1; PP; Cytosolic Inorganic Pyrophosphatase; Pyrophosphatase (Inorganic)1; Inorganic Diphosphatase 1; Inorganic Pyrophosphatase; EC 3.6.1.1; Epididymis Secretory Sperm Binding Protein Li 66p; Diphosphate Phosphohydrolase; Pyrophosphatase (Inorganic); Pyrophosphatase 1; HEL-S-66p; PPase.
Calculated MW	Calculated MW: 33 kDa, Observed MW: 33 kDa
Uniprot ID	Q15181
Gene ID	5464
Background	The protein encoded by this gene is a member of the inorganic pyrophosphatase (PPase) family. PPases catalyze the hydrolysis of pyrophosphate to inorganic phosphate, which is important for the phosphate metabolism of cells. Studies of a similar protein in bovine suggested a cytoplasmic localization of this enzyme.



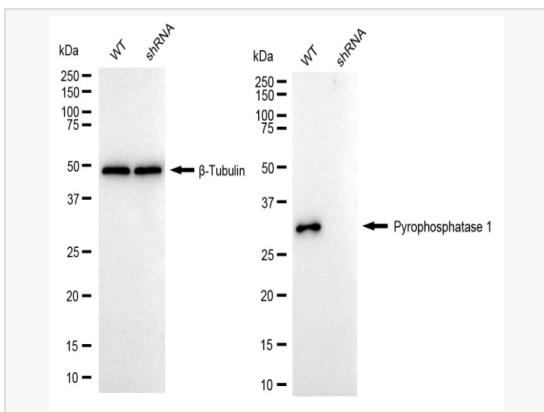
Flow cytometric analysis of Pyrophosphatase 1 expression in HT-1080 cells using Pyrophosphatase 1 antibody (R020998, 1:2,000). Green, isotype control; red, Pyrophosphatase 1.



Immunocytochemical staining of HT-1080 cells with Pyrophosphatase 1 antibody (R020998, 1:1,000). Nuclei were stained blue with DAPI; Pyrophosphatase 1 was stained magenta with Alexa Fluor® 647. Images were taken using Leica stellaris 5. Protein abundance based on laser Intensity and smart gain: Medium. Scale bar, 20 μm.



Western blotting analysis using Pyrophosphatase 1 antibody (R020998). Total cell lysates (30 μg) from various cell lines were loaded and separated by SDS-PAGE. The blot was incubated with Pyrophosphatase 1 antibody (R020998, 1:5,000) and HRP-conjugated goat anti-rabbit secondary antibody (1:20,000) respectively. Image was developed using ECL Substrate Kit.



Western blotting analysis using Pyrophosphatase 1 antibody (R020998). Pyrophosphatase 1 expression in wild type (WT) and Pyrophosphatase 1 shRNA knockdown (KD) HeLa cells with 20 μg of total cell lysates. β-Tubulin serves as a loading control. The blot was incubated with Pyrophosphatase 1 antibody (R020998, 1:5,000) and HRP-conjugated goat anti-rabbit secondary antibody (1:20,000) respectively. Image was developed using ECL Substrate Kit.