

## [KD Validated] Anti-FOXO1 Rabbit mAb

Purified Recombinant Rabbit Monoclonal Antibody

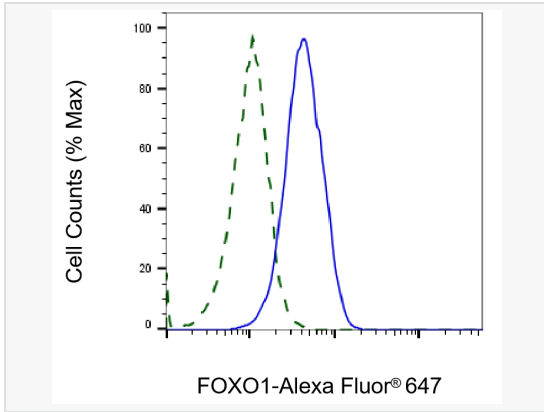
Catalog # R020990

### Product Information

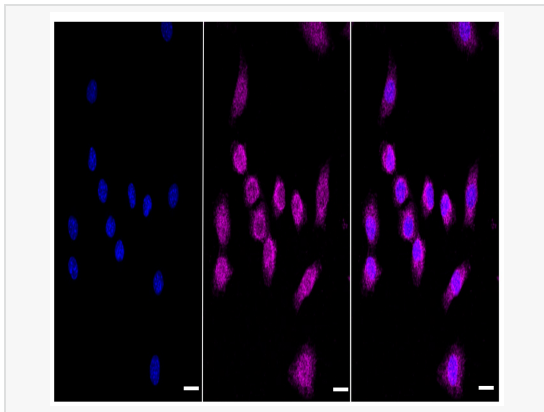
Application	WB, FC, IF (Cell)/ICC
Reactivity	Human, Mouse, Rat
Dilution	WB 1:1,000~1:5,000; FC 1:200~1:2,000; IF 1:100~1:1,000
Host	Rabbit
Clonality	Monoclonal
Clone No.	41Q79S76
Isotype	IgG
Label	Unconjugated
Immunogen	A synthesized peptide derived from human FOXO1
Format	Affinity purified monoclonal antibody supplied in PBS with 0.02% sodium azide and 50% glycerol, pH 7.3.
Storage	Shipped on wet ice. Store at -20°C. Stable for 12 months from date of receipt. Aliquoting is unnecessary for -20°C storage.
Precautions	[KD Validated] Anti-FOXO1 Rabbit mAb [41Q79S76] is for research use only and not for use in diagnostic or therapeutic procedures.

### Protein Information

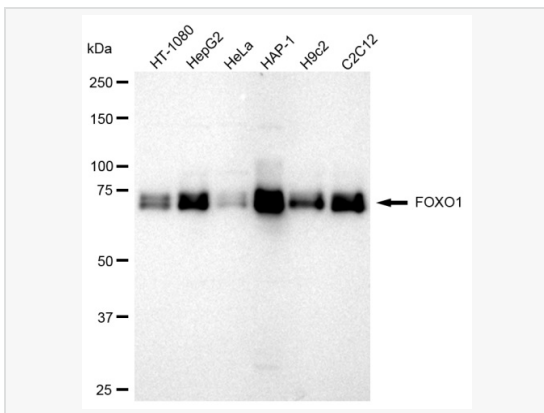
Synonyms	Forkhead Box O1; FOXO1A; FKHI; FKHR; Forkhead Box Protein O1A; Forkhead Box Protein O1; Forkhead, Drosophila, Homolog Of, In Rhabdomyosarcoma; Forkhead Homolog In Rhabdomyosarcoma; Forkhead In Rhabdomyosarcoma.
Calculated MW	Calculated MW: 70 kDa, Observed MW: 70-75 kDa
Uniprot ID	Q12778
Gene ID	2308
Background	Transcription factor which acts as a regulator of cell responses to oxidative stress. In the presence of KIRT1, mediates down-regulation of cyclin D1 and up-regulation of CDKN1B levels which are required for cell transition from proliferative growth to quiescence.



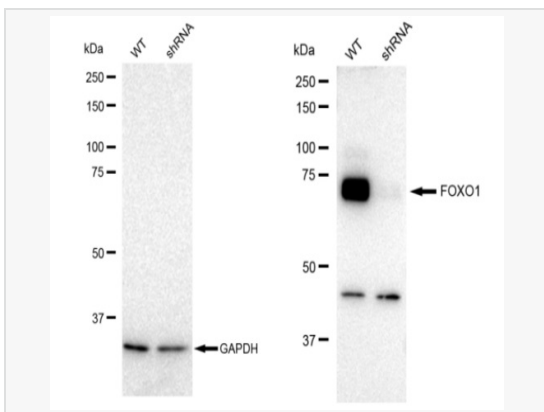
Validation of FOXO1 knockdown using flow cytometry. Wild-type(WT, Blue) and knockdown(KD, Green) HeLa cells were stained with FOXO1 antibody (R020990, 1:2,000) and analyzed using CytoFLEX.



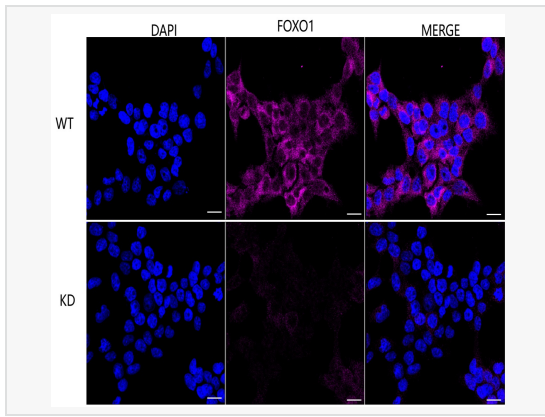
Immunocytochemical staining of C2C12 cells with FOXO1 antibody (R020990, 1:1,000). Nuclei were stained blue with DAPI; FOXO1 was stained magenta with Alexa Fluor® 647. Images were taken using Leica stellaris 5. Protein abundance based on laser Intensity and smart gain: Very low. Scale bar: 20  $\mu$ m.



Western blotting analysis using FOXO1 antibody (R020990). Total cell lysates (30  $\mu$ g) from various cell lines were loaded and separated by SDS-PAGE. The blot was incubated with FOXO1 antibody (R020990, 1:5,000) and HRP-conjugated goat anti rabbit secondary antibody (1:50,000) respectively. Image was developed using ECL Substrate Kit.



Western blotting analysis using FOXO1 antibody (R020990). FOXO1 expression in wild type (WT) and FOXO1 shRNA knockdown (KD) HeLa cells with 30  $\mu$ g of total cell lysates. GAPDH serves as a loading control. The blot was incubated with FOXO1 antibody (R020990, 1:5,000) and HRP-conjugated goat anti rabbit secondary antibody (1:50,000) respectively. Image was developed using ECL Substrate Kit.



Immunocytochemical staining of HeLa cells using FOXO1 antibody (R020990, 1:1,000), Top panel: wild-type (WT); Bottom panel: FOXO1 shRNA knockdown (KD). Nuclei were stained blue with DAPI; FOXO1 was stained magenta with Alexa Fluor® 647. Scale bar, 20  $\mu$ m. Permeabilization: Triton.