

[KD Validated] Anti-TCF7L1 Rabbit mAb

Purified Recombinant Rabbit Monoclonal Antibody

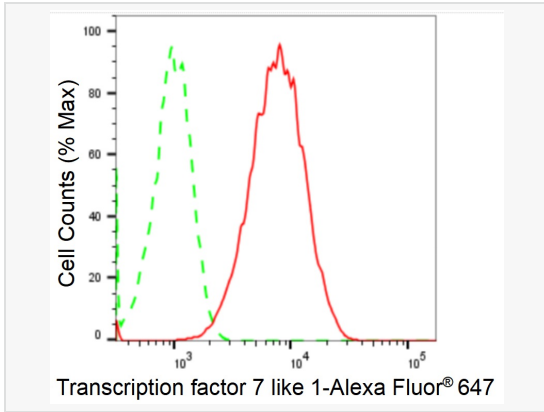
Catalog # R020968

Product Information

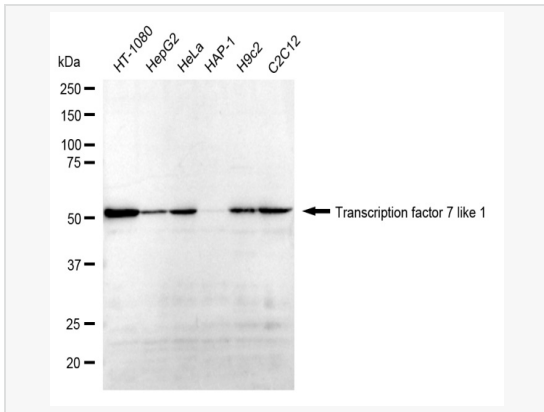
Application	WB, FC
Reactivity	Human, Mouse, Rat
Dilution	WB 1:1,000~1:5,000; FC 1:200~1:2,000
Host	Rabbit
Clonality	Monoclonal
Clone No.	55R72B94
Isotype	IgG
Label	Unconjugated
Immunogen	A synthesized peptide derived from human TCF3
Format	Affinity purified monoclonal antibody supplied in PBS with 0.02% sodium azide and 50% glycerol, pH 7.3.
Storage	Shipped on wet ice. Store at -20°C. Stable for 12 months from date of receipt. Aliquoting is unnecessary for -20°C storage.
Precautions	[KD Validated] Anti-TCF7L1 Rabbit mAb [55R72B94] is for research use only and not for use in diagnostic or therapeutic procedures.

Protein Information

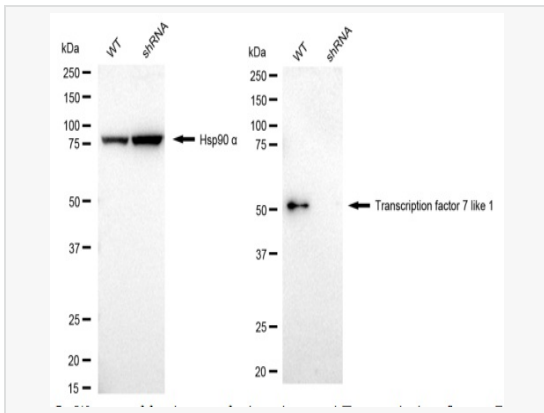
Synonyms	TCF7L1; Transcription Factor 7 Like 1; TCF3; Transcription Factor 7-Like 1 (T-Cell Specific, HMG-Box); HMG Box Transcription Factor 3; Transcription Factor 7-Like 1; TCF-3.
Calculated MW	Calculated MW: 63 kDa, Observed MW: 63 kDa
Uniprot ID	Q9HCS4
Gene ID	83439
Background	This gene encodes a member of the T cell factor/lymphoid enhancer factor family of transcription factors. These transcription factors are activated by beta catenin, mediate the Wnt signaling pathway and are antagonized by the transforming growth factor beta signaling pathway. The encoded protein contains a high mobility group-box DNA binding domain and participates in the regulation of cell cycle genes and cellular senescence. [provided by RefSeq, Nov 2010]
Cellular Location	Nucleus.
Tissue Location	Detected in hair follicles and skin keratinocytes, and at lower levels in stomach epithelium.



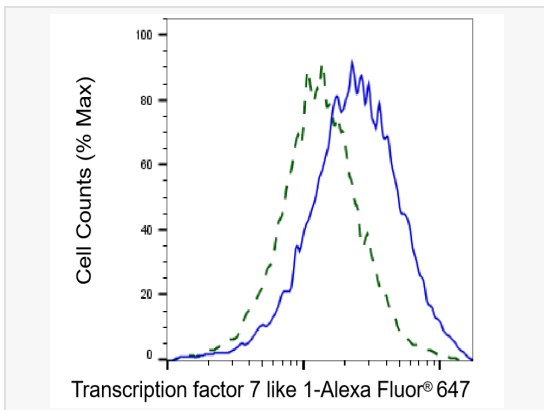
Flow cytometric analysis of Transcription factor 7 like 1 expression in HT-1080 cells using Transcription factor 7 like 1 antibody (R020968, 1:2,000). Green, isotype control; red, Transcription factor 7 like 1.



Western blotting analysis using Transcription factor 7 like 1 antibody (R020968). Total cell lysates (30 µg) from various cell lines were loaded and separated by SDS-PAGE. The blot was incubated with Transcription factor 7 like 1 antibody (R020968, 1:5,000) and HRP-conjugated goat anti-rabbit secondary antibody (1:20,000) respectively. Image was developed using ECL Substrate Kit.



Western blotting analysis using Transcription factor 7 like 1 antibody (R020968). Transcription factor 7 like 1 expression in wild type (WT) and Transcription factor 7 like 1 shRNA knockdown (KD) HeLa cells with 20 µg of total cell lysates. Hsp90 α serves as a loading control. The blot was incubated with Transcription factor 7 like 1 antibody (R020968, 1:5,000) and HRP-conjugated goat anti-rabbit secondary antibody (1:20,000) respectively. Image was developed using ECL Substrate Kit.



Validation of Transcription factor 7 like 1 knockdown using flow cytometry. Wild-type(WT, Blue) and knockdown(KD, Green) HeLa cells were stained with Transcription factor 7 like 1 antibody (R020968, 1:2,000) and analyzed using BD flow cytometer.