

[KD Validated] Anti-STAT5B Rabbit mAb

Purified Recombinant Rabbit Monoclonal Antibody

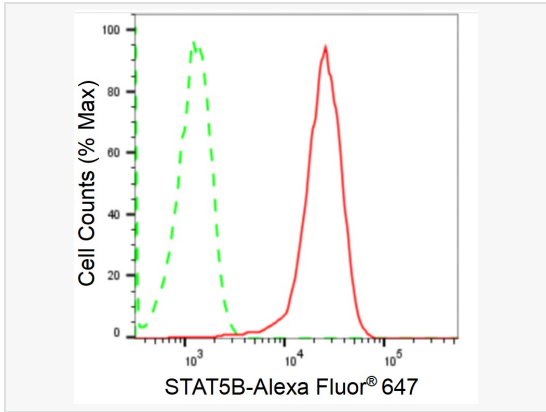
Catalog # R020950

Product Information

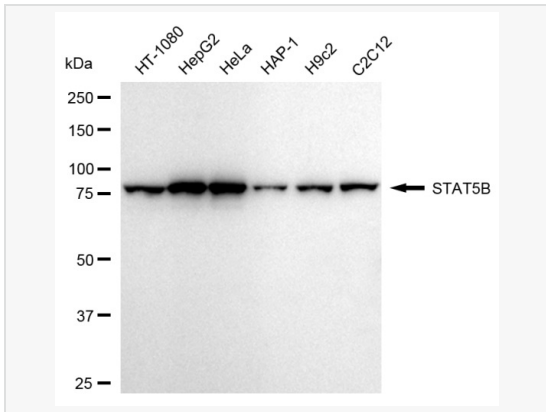
Application	WB, FC, IF (Cell)/ICC
Reactivity	Human, Mouse, Rat
Dilution	WB 1:1,000~1:5,000; FC 1:200~1:2,000; IF 1:100~1:1,000
Host	Rabbit
Clonality	Monoclonal
Clone No.	32O52B99
Isotype	IgG
Label	Unconjugated
Immunogen	A synthesized peptide derived from human STAT5B
Format	Affinity purified monoclonal antibody supplied in PBS with 0.02% sodium azide and 50% glycerol, pH 7.3.
Storage	Shipped on wet ice. Store at -20°C. Stable for 12 months from date of receipt. Aliquoting is unnecessary for -20°C storage.
Precautions	[KD Validated] Anti-STAT5B Rabbit mAb [32O52B99] is for research use only and not for use in diagnostic or therapeutic procedures.

Protein Information

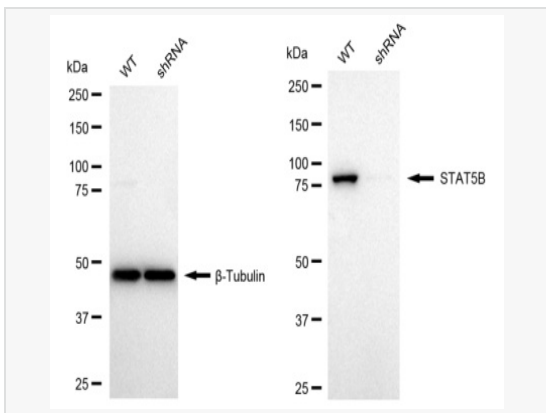
Synonyms	STAT5B; Signal Transducer And Activator Of Transcription 5B; Transcription Factor STAT5B; GHISID2; STAT5.
Calculated MW	Calculated MW: 14 kDa, Observed MW: 18 kDa
Uniprot ID	P51692
Gene ID	6777
Background	Stat5 is activated in response to a wide variety of ligands including IL-2, GM-CSF, growth hormone and prolactin. Stat5 is constitutively active in some leukemic cell types. Phosphorylated Stat5 is found in some endothelial cells treated with IL-3, which suggests its involvement in angiogenesis and cell motility. Stat5a and Stat5b are independently regulated and activated in various cell types.



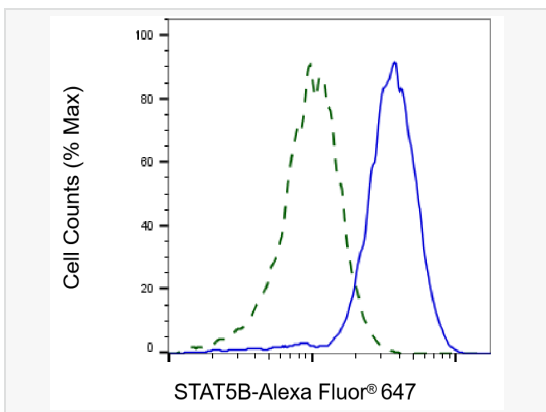
Flow cytometric analysis of STAT5B expression in HepG2 cells using STAT5B antibody (R020950, 1:2,000). Green, isotype control; red, STAT5B.



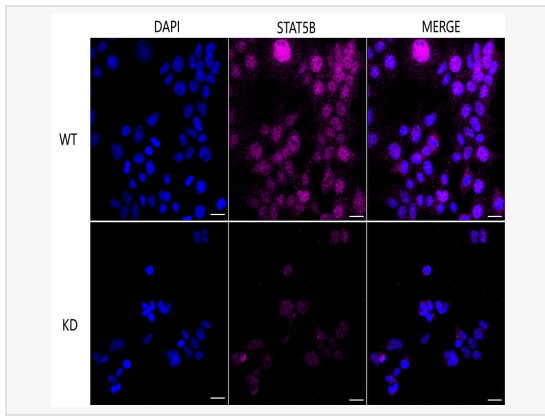
Western blotting analysis using STAT5B antibody (R020950). Total cell lysates (30 μ g) from various cell lines were loaded and separated by SDS-PAGE. The blot was incubated with STAT5B antibody (R020950, 1:5,000) and HRP-conjugated goat anti-rabbit secondary antibody (1:20,000) respectively. Image was developed using ECL Substrate Kit.



Western blotting analysis using STAT5B antibody (R020950). STAT5B expression in wild type (WT) and STAT5B shRNA knockdown (KD) HeLa cells with 20 μ g of total cell lysates. β -Tubulin serves as a loading control. The blot was incubated with STAT5B antibody (R020950, 1:5,000) and HRP-conjugated goat anti-rabbit secondary antibody (1:20,000) respectively. Image was developed using ECL Substrate Kit.



Validation of STAT5B knockdown using flow cytometry. Wild-type(WT, Blue) and knockdown(KD, Green) HeLa cells were stained with STAT5B antibody (R020950, 1:2,000) and analyzed using BD flow cytometer.



Immunocytochemical staining of HeLa cells using STAT5B antibody (R020950, 1:1,000), Top panel: wild-type (WT); Bottom panel: STAT5B shRNA knockdown (KD). Nuclei were stained blue with DAPI; STAT5B was stained magenta with Alexa Fluor® 647. Scale bar, 20 μ m.