

## [KD Validated] Anti-TFAP2A Rabbit mAb

Purified Recombinant Rabbit Monoclonal Antibody

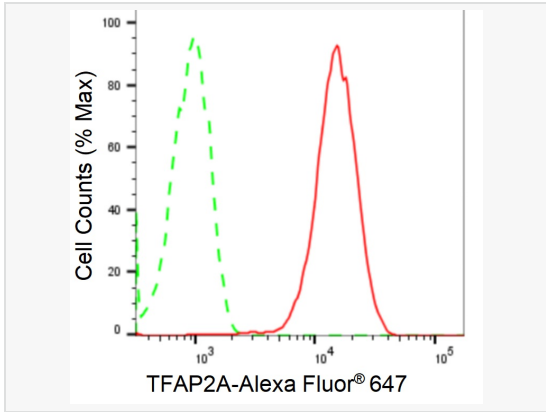
Catalog # R020943

### Product Information

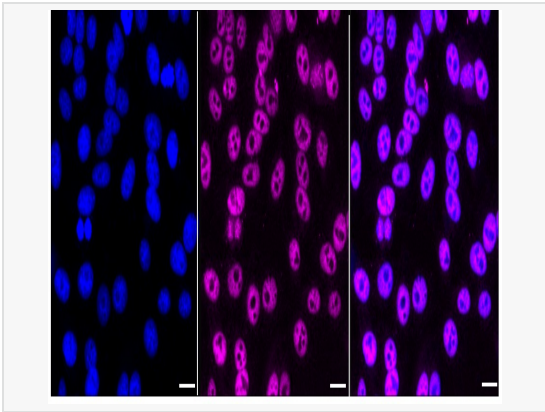
Application	WB, FC, IF (Cell)/ICC
Reactivity	Human, Rat
Dilution	WB 1:1,000~1:5,000; FC 1:200~1:2,000; IF 1:100~1:1,000
Host	Rabbit
Clonality	Monoclonal
Clone No.	17A70H40
Isotype	IgG
Label	Unconjugated
Immunogen	A synthesized peptide derived from human AP2 alpha
Format	Affinity purified monoclonal antibody supplied in PBS with 0.02% sodium azide and 50% glycerol, pH 7.3.
Storage	Shipped on wet ice. Store at -20°C. Stable for 12 months from date of receipt. Aliquoting is unnecessary for -20°C storage.
Precautions	[KD Validated] Anti-TFAP2A Rabbit mAb [17A70H40] is for research use only and not for use in diagnostic or therapeutic procedures.

### Protein Information

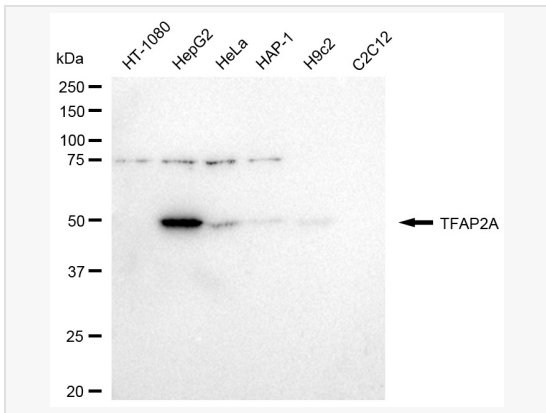
Synonyms	TFAP2A; Transcription Factor AP-2 Alpha; AP-2; AP-2alpha; AP2TF; TFAP2; Transcription Factor AP-2 Alpha (Activating Enhancer Binding Protein 2 Alpha); Activating Enhancer-Binding Protein 2-Alpha; Transcription Factor AP-2-Alpha; AP-2 Transcription Factor; Activator Protein 2; Transcription Factor AP-2 Alpha (Activating Enhancer-Binding Protein 2 Alpha); AP2-Alpha; BOFS.
Calculated MW	Calculated MW: 48 kDa, Observed MW: 48 kDa
Uniprot ID	P05549
Gene ID	7020
Background	The protein encoded by this gene is a transcription factor that binds the consensus sequence 5'-GCCNNNGGC-3'. The encoded protein functions as either a homodimer or as a heterodimer with similar family members. This protein activates the transcription of some genes while inhibiting the transcription of others. Defects in this gene are a cause of branchiooculofacial syndrome (BOFS). Three transcript variants encoding different isoforms have been found for this gene.



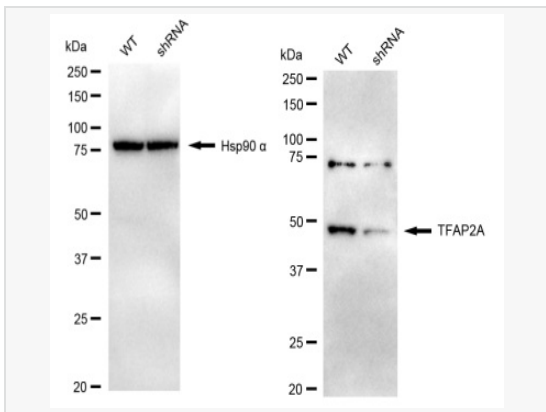
Flow cytometric analysis of TFAP2A expression in HepG2 cells using TFAP2A antibody (R020943, 1:2,000). Green, isotype control; red, TFAP2A.



Immunocytochemical staining of HepG2 cells with TFAP2A antibody (R020943, 1:1,000). Nuclei were stained blue with DAPI; TFAP2A was stained magenta with Alexa Fluor® 647. Images were taken using Leica stellaris 5. Protein abundance based on laser Intensity and smart gain: Medium. Scale bar: 20 µm.



Western blotting analysis using TFAP2A antibody (R020943). Total cell lysates (30 µg) from various cell lines were loaded and separated by SDS-PAGE. The blot was incubated with TFAP2A antibody (R020943, 1:5,000) and HRP-conjugated goat anti-rabbit secondary antibody (1:20,000) respectively. Image was developed using ECL Substrate Kit.



Western blotting analysis using TFAP2A antibody (R020943). TFAP2A expression in wild type (WT) and TFAP2A shRNA knockdown (KD) HeLa cells with 20 µg of total cell lysates. Hsp90 α serves as a loading control. The blot was incubated with TFAP2A antibody (R020943, 1:5,000) and HRP-conjugated goat anti-rabbit secondary antibody (1:20,000) respectively. Image was developed using ECL Substrate Kit.