

[KD Validated] Anti-EEF2K Rabbit pAb

Purified Rabbit Polyclonal Antibody

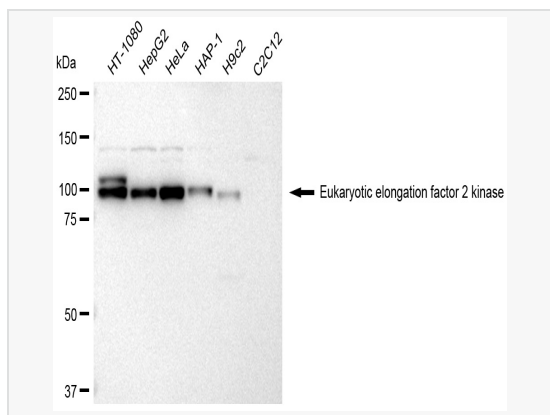
Catalog # P020898

Product Information

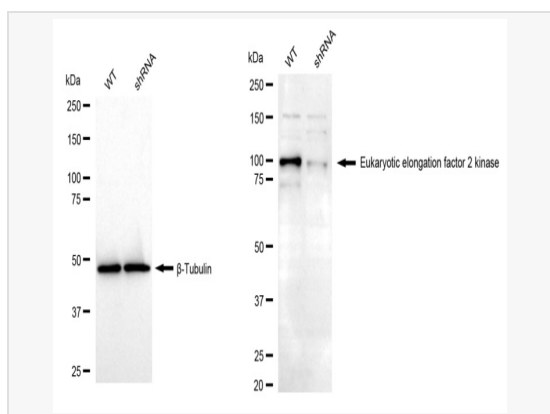
Application	WB
Reactivity	Human, Rat
Dilution	WB 1:2,500~1:5,000
Host	Rabbit
Clonality	Polyclonal
Isotype	IgG
Label	Unconjugated
Immunogen	A synthesized peptide derived from human EEF2K
Format	Affinity purified polyclonal antibody supplied in PBS with 0.02% sodium azide and 50% glycerol, pH 7.3.
Storage	Shipped on wet ice. Store at -20°C. Stable for 12 months from date of receipt. Aliquoting is unnecessary for -20°C storage.
Precautions	[KD Validated] Anti-EEF2K Rabbit pAb is for research use only and not for use in diagnostic or therapeutic procedures.

Protein Information

Synonyms	EEF2K; Eukaryotic Elongation Factor 2 Kinase; EEF-2K; CaMKIII; EEF-2 Kinase; EC 2.7.11.20; Calcium/Calmodulin-Dependent Eukaryotic Elongation Factor-2 Kinase; Calcium/Calmodulin-Dependent Eukaryotic Elongation Factor 2 Kinase; Calmodulin-Dependent Protein Kinase III; Eukaryotic Elongation Factor 2 Kinase; Elongation Factor-2 Kinase; Alternative Protein EEF2K; EC 2.7.11; HSU93850.
Calculated MW	Calculated MW: 82 kDa, Observed MW: 105 kDa
Uniprot ID	O00418
Gene ID	29904
Background	This gene encodes a highly conserved protein kinase in the calmodulin-mediated signaling pathway that links activation of cell surface receptors to cell division. This kinase is involved in the regulation of protein synthesis. It phosphorylates eukaryotic elongation factor 2 (EEF2) and thus inhibits the EEF2 function. The activity of this kinase is increased in many cancers and may be a valid target for anti-cancer treatment.



Western blotting analysis using Eukaryotic elongation factor 2 kinase antibody (P020898). Total cell lysates (30 μ g) from various cell lines were loaded and separated by SDS-PAGE. The blot was incubated with Eukaryotic elongation factor 2 kinase antibody (P020898, 1:5,000) and HRP-conjugated goat anti-rabbit secondary antibody (1:20,000) respectively. Image was developed using ECL Substrate Kit.



Western blotting analysis using Eukaryotic elongation factor 2 kinase antibody (P020898). Eukaryotic elongation factor 2 kinase expression in wild type (WT) and Eukaryotic elongation factor 2 kinase shRNA knockdown (KD) HeLa cells with 30 μ g of total cell lysates. β -Tubulin serves as a loading control. The blot was incubated with Eukaryotic elongation factor 2 kinase antibody (P020898, 1:5,000) and HRP-conjugated goat anti-rabbit secondary antibody (1:20,000) respectively. Image was developed using ECL Substrate Kit.