

[KD Validated] Anti-PCNA Mouse mAb

Purified Recombinant Rabbit Monoclonal Antibody

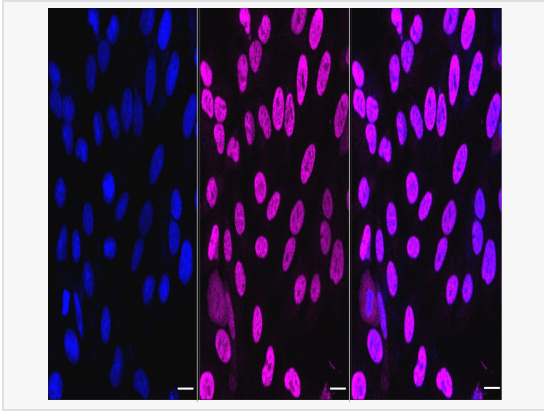
Catalog # M020890

Product Information

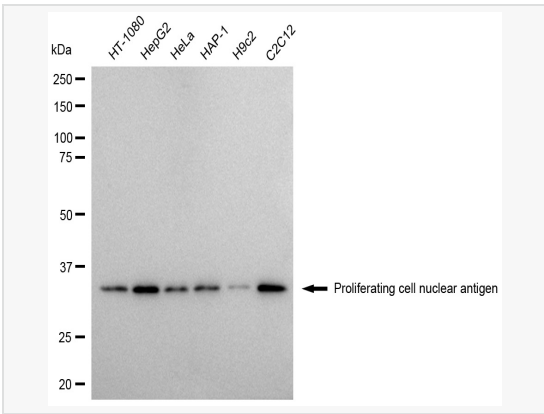
Application	WB, FC, IF (Cell)/ICC, IHC-P/IF (Tissue-P)
Reactivity	Human, Mouse, Rat
Dilution	WB 1:1,000~1:5,000; FC 1:200~1:2,000; IF 1:100~1:1,000; IHC-P 1:100~1:200
Host	Mouse
Clonality	Monoclonal
Clone No.	89T93B62
Isotype	IgG
Label	Unconjugated
Immunogen	A synthesized peptide derived from human PCNA
Format	Affinity purified monoclonal antibody supplied in PBS with 0.02% sodium azide and 50% glycerol, pH 7.3.
Storage	Shipped on wet ice. Store at -20°C. Stable for 12 months from date of receipt. Aliquoting is unnecessary for -20°C storage.
Precautions	[KD Validated] Anti-PCNA Mouse mAb [89T93B62] is for research use only and not for use in diagnostic or therapeutic procedures.

Protein Information

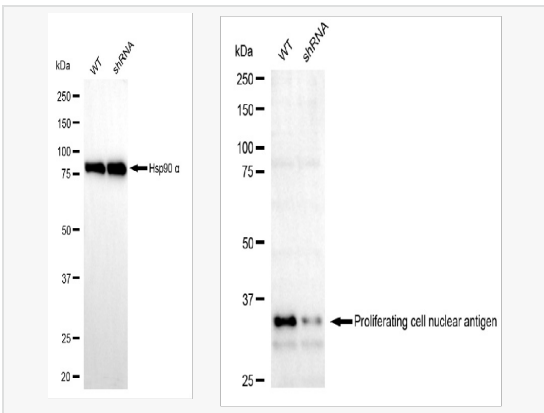
Synonyms	PCNA; Proliferating Cell Nuclear Antigen 2; Cyclin; DNA Polymerase Delta Auxiliary Protein; ATLD2.
Calculated MW	Calculated MW: 29 kDa, Observed MW: 35 kDa
Uniprot ID	P12004
Gene ID	5111
Background	The protein encoded by this gene is found in the nucleus and is a cofactor of DNA polymerase delta. The encoded protein acts as a homotrimer and helps increase the processivity of leading strand synthesis during DNA replication. In response to DNA damage, this protein is ubiquitinated and is involved in the RAD6-dependent DNA repair pathway. Two transcript variants encoding the same protein have been found for this gene. Pseudogenes of this gene have been described on chromosome 4 and on the X chromosome. [provided by RefSeq, Jul 2008]



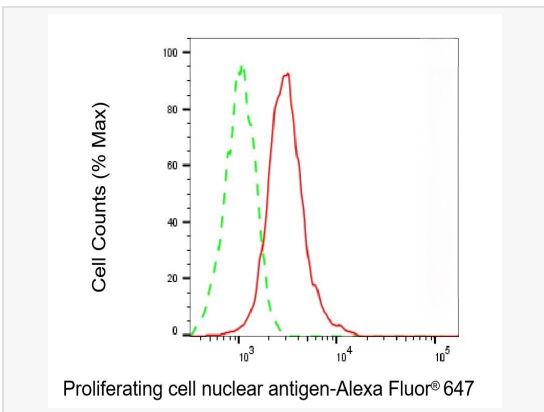
Immunocytochemical staining of HepG2 cells with Proliferating cell nuclear antigen protein antibody (M020890, 1:1,000). Nuclei were stained blue with DAPI; Proliferating cell nuclear antigen was stained magenta with Alexa Fluor® 647. Images were taken using Leica stellaris 5. Protein abundance based on laser Intensity and smart gain: Medium. Scale bar, 20 µm.



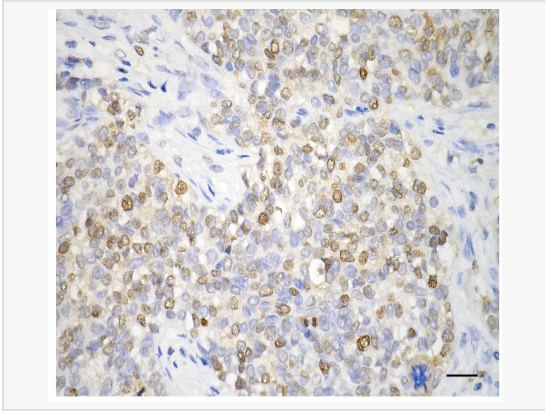
Western blotting analysis using Proliferating cell nuclear antigen antibody (M020890). Total cell lysates (30 µg) from various cell lines were loaded and separated by SDS-PAGE. The blot was incubated with Proliferating cell nuclear antigen antibody (M020890, 1:5,000) and HRP-conjugated goat anti-mouse secondary antibody (1:20,000) respectively. Image was developed using ECL Substrate Kit.



Western blotting analysis using Proliferating cell nuclear antigen antibody (M020890). Proliferating cell nuclear antigen expression in wild type (WT) and Proliferating cell nuclear antigen shRNA knockdown (KD) HeLa cells with 30 µg of total cell lysates. Hsp90 α serves as a loading control. The blot was incubated with Proliferating cell nuclear antigen antibody (M020890, 1:5,000) and HRP-conjugated goat anti-mouse secondary antibody (1:20,000) respectively. Image was developed using ECL Substrate Kit.



Flow cytometric analysis of Proliferating cell nuclear antigen expression in HepG2 cells using Proliferating cell nuclear antigen antibody (M020890, 1:2,000). Green, isotype control; red, Proliferating cell nuclear antigen.



Immunohistochemistry was performed on paraffin-embedded human breast carcinoma using proliferating cell nuclear antigen antibody (M020890, 1:200). Antigen retrieval was done in sodium citrate buffer (pH 6.0). DAB was used for detection, with hematoxylin counterstaining. Images were acquired using a Nikon Ci-L Plus microscope (40× objective). Scale bar: 25 μ m.