

[KD Validated] Anti-MITF Mouse mAb

Purified Recombinant Rabbit Monoclonal Antibody

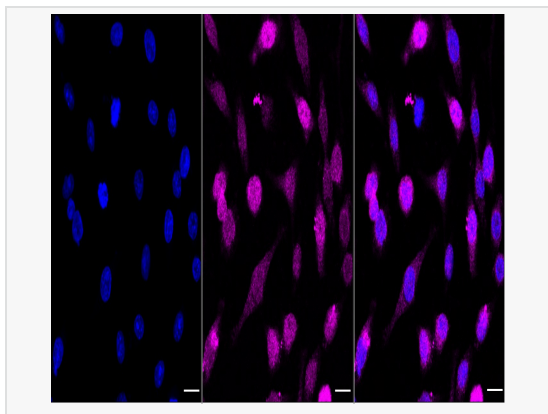
Catalog # M020887

Product Information

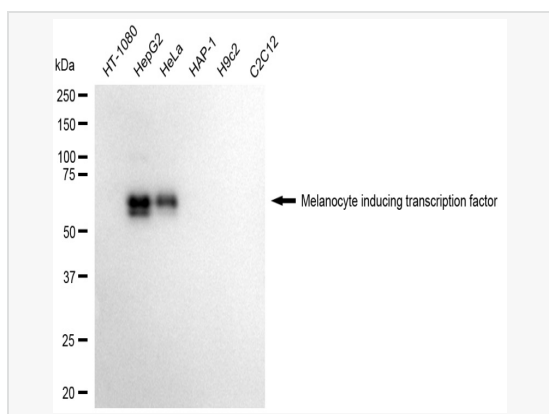
Application	WB, IF (Cell)/ICC
Reactivity	Human
Dilution	WB 1:1,000~1:5,000; IF 1:100~1:1,000
Host	Mouse
Clonality	Monoclonal
Clone No.	92Q55H79
Isotype	IgG
Label	Unconjugated
Immunogen	Recombinant protein of human MITF
Format	Affinity purified monoclonal antibody supplied in PBS with 0.02% sodium azide and 50% glycerol, pH 7.3.
Storage	Shipped on wet ice. Store at -20°C. Stable for 12 months from date of receipt. Aliquoting is unnecessary for -20°C storage.
Precautions	[KD Validated] Anti-MITF Mouse mAb [92Q55H79] is for research use only and not for use in diagnostic or therapeutic procedures.

Protein Information

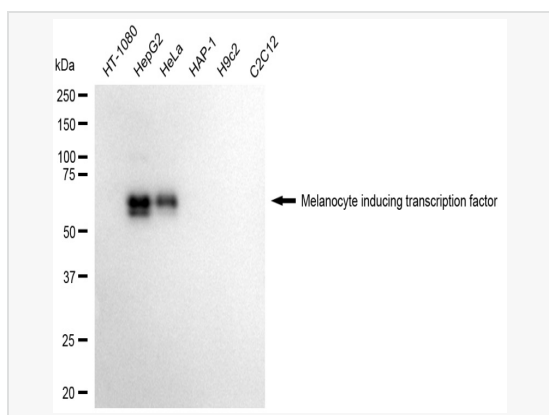
Synonyms	MITF; Melanocyte Inducing Transcription Factor; BHLHe32; Microphthalmia-Associated Transcription Factor; MI; Melanogenesis Associated Transcription Factor; Class E Basic Helix-Loop-Helix Protein 32; WS2A; WS2; Microphthalmia-Associated Transcription Factor; Homolog Of Mouse Microphthalmia; Waardenburg Syndrome, Type 2A; BHLHE32; COMMAD; MITF-A; CMM8.
Calculated MW	Calculated MW: 59 kDa; Observed MW: 57 kDa
Uniprot ID	O75030
Gene ID	4286
Background	Microphthalmia-associated transcription factor (MITF) is a basic helix-loop-helix leucine zipper transcription factor that is most widely known for its roles in melanocyte, ophthalmic, and osteoclast development. Plays a critical role in the differentiation of various cell types as neural crest-derived melanocytes, mast cells, osteoclasts and optic cup-derived retinal pigment epithelium.



Immunocytochemical staining of HepG2 cells with Melanocyte inducing transcription factor antibody(M020887, 1:1,000) . Nuclei were stained blue with DAPI; Melanocyte inducing transcription factor was stained magenta with Alexa Fluor® 647. Images were taken using Leica stellaris 5. Protein abundance based on laser Intensity and smart gain: Medium. Scale bar, 20 μ m.



Western blotting analysis using Melanocyte inducing transcription factor antibody (M020887). Total cell lysates (30 μ g) from various cell lines were loaded and separated by SDS-PAGE. The blot was incubated with Melanocyte inducing transcription factor antibody (M020887, 1:5,000) and HRP-conjugated goat anti-mouse secondary antibody (1:20,000) respectively. Image was developed using ECL Substrate Kit.



Western blotting analysis using melanocyte inducing transcription factor antibody (M020887). Melanocyte inducing transcription factor expression in wild-type (WT) and melanocyte inducing transcription factor (MITF) shRNA knockdown (KD) HeLa cells with 30 μ g of total cell lysates. Hsp90 α serves as a loading control. The blot was incubated with melanocyte inducing transcription factor antibody (M020887, 1:5,000) and HRP-conjugated goat anti-mouse secondary antibody (1:20,000) respectively. Image was developed using ECL Substrate Kit.