

## [KD Validated] Anti-SERPINE1 Rabbit mAb

Purified Recombinant Rabbit Monoclonal Antibody

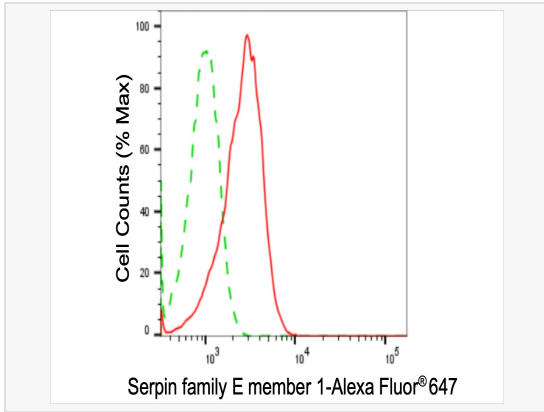
Catalog # R020878

### Product Information

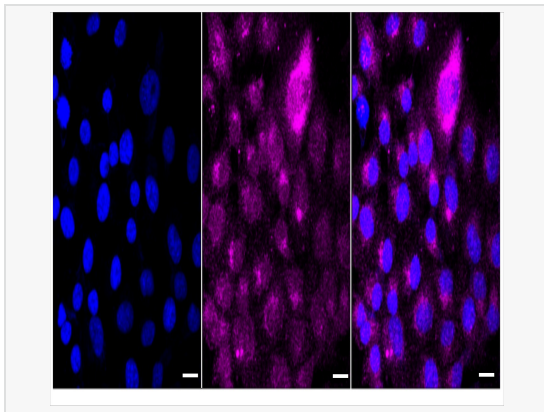
Application	WB, FC, IF (Cell)/ICC
Reactivity	Human
Dilution	WB 1:1,000~1:5,000; FC 1:200~1:2,000; IF 1:100~1:1,000
Host	Rabbit
Clonality	Monoclonal
Clone No.	25J41M41
Isotype	IgG
Label	Unconjugated
Immunogen	A synthesized peptide derived from human PAI1
Format	Affinity purified monoclonal antibody supplied in PBS with 0.02% sodium azide and 50% glycerol, pH 7.3.
Storage	Shipped on wet ice. Store at -20°C. Stable for 12 months from date of receipt. Aliquoting is unnecessary for -20°C storage.
Precautions	[KD Validated] Anti-SERPINE1 Rabbit mAb [25J41M41] is for research use only and not for use in diagnostic or therapeutic procedures.

### Protein Information

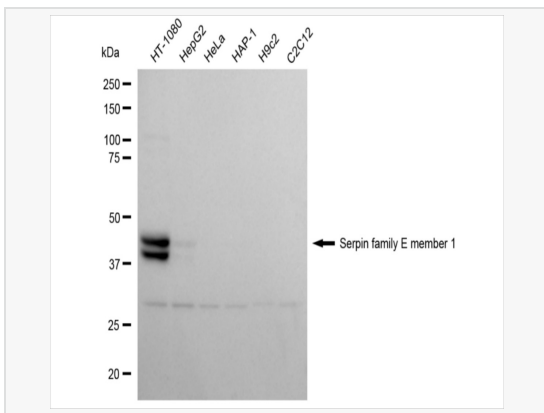
Synonyms	SERPINE1; Serpin Family E Member 1; PAI 2; PLANH1; PAI1; Serine (Or Cysteine) Proteinase Inhibitor, Clade E (Nexin, Plasminogen Activator Inhibitor Type 1), Member 1; Endothelial Plasminogen Activator Inhibitor; Plasminogen Activator Inhibitor 1; Serpin E1; PAI-1; Serpin Peptidase Inhibitor, Clade E (Nexin, Plasminogen Activator Inhibitor Type 1), Member 1; Plasminogen Activator Inhibitor, Type I.
Calculated MW	Calculated MW: 45 kDa, Observed MW: 45 kDa
Uniprot ID	P05121
Gene ID	5054
Background	This inhibitor acts as 'bait' for tissue plasminogen activator, urokinase, and protein C. Its rapid interaction with TPA may function as a major control point in the regulation of fibrinolysis.



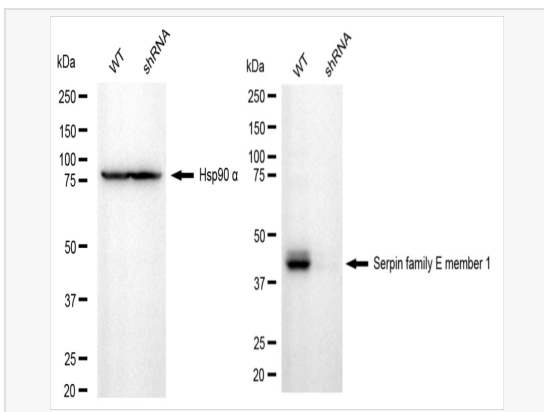
Flow cytometric analysis of Serpin family E member 1 expression in HT-1080 cells using Serpin family E member 1 antibody (R020878, 1:2,000). Green, isotype control; red, Serpin family E member 1.



Immunocytochemical staining of HT-1080 cells with Serpin family E member 1 antibody (R020878, 1:1,000). Nuclei were stained blue with DAPI; Serpin family E member 1 was stained magenta with Alexa Fluor® 647. Images were taken using Leica stellaris 5. Protein abundance based on laser Intensity and smart gain: Low. Scale bar: 20  $\mu$ m.



Western blotting analysis using serpin family E member 1 antibody (R020878). Total cell lysates (30  $\mu$ g) from various cell lines were loaded and separated by SDS-PAGE. The blot was incubated with serpin family E member 1 antibody (R020878, 1:5,000) and HRP-conjugated goat anti-rabbit secondary antibody (1:20,000) respectively. Image was developed using ECL Substrate Kit.



Western blotting analysis using serpin family E member 1 antibody (R020878). Serpin family E member 1 expression in wild-type (WT) and serpin family E member 1 (SERPINE1) shRNA knockdown (KD) HT-1080 cells with 20  $\mu$ g of total cell lysates. Hsp90  $\alpha$  serves as a loading control. The blot was incubated with serpin family E member 1 antibody (R020878, 1:5,000) and HRP-conjugated goat anti-rabbit secondary antibody (1:20,000) respectively. Image was developed using ECL Substrate Kit.