

[KD Validated] Anti-CASP9 Rabbit mAb

Purified Recombinant Rabbit Monoclonal Antibody

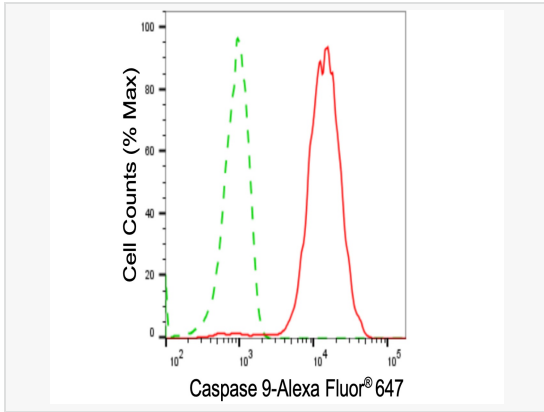
Catalog # R020873

Product Information

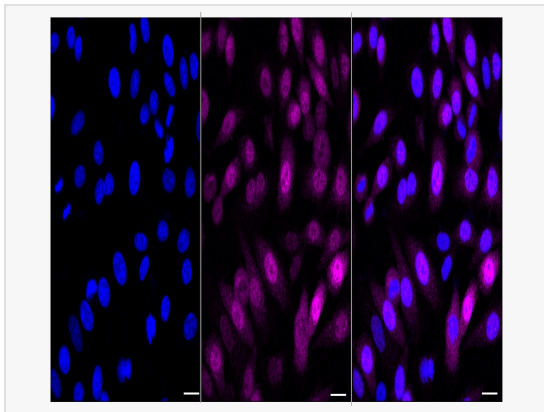
Application	WB, FC, IF (Cell)/ICC
Reactivity	Human, Mouse
Dilution	WB 1:1,000~1:5,000; FC 1:200~1:2,000; IF 1:100~1:1,000
Host	Rabbit
Clonality	Monoclonal
Clone No.	36T25D03
Isotype	IgG
Label	Unconjugated
Immunogen	A synthesized peptide derived from human Caspase-9
Format	Affinity purified monoclonal antibody supplied in PBS with 0.02% sodium azide and 50% glycerol, pH 7.3.
Storage	Shipped on wet ice. Store at -20°C. Stable for 12 months from date of receipt. Aliquoting is unnecessary for -20°C storage.
Precautions	[KD Validated] Anti-CASP9 Rabbit mAb [36T25D03] is for research use only and not for use in diagnostic or therapeutic procedures.

Protein Information

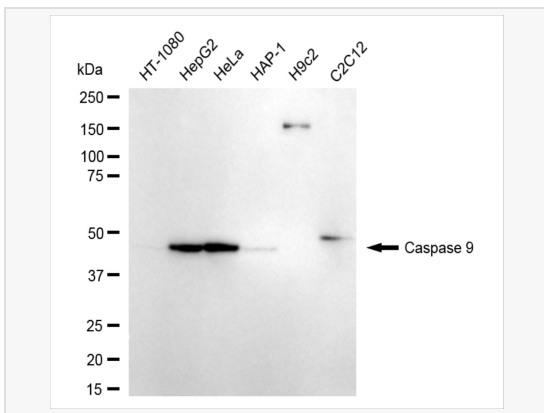
Synonyms	Caspase 9; ICE-LAP6; APAF-3; MCH6; PPP1R56; Caspase 9, Apoptosis-Related Cysteine Peptidase; Protein Phosphatase 1, Regulatory Subunit 56; ICE-Like Apoptotic Protease 6; Caspase-9; Caspase 9, Apoptosis-Related Cysteine Protease; Apoptotic Protease Activating Factor 3; Apoptotic Protease-Activating Factor 3; Apoptotic Protease MCH-6; Apoptotic Protease Mch-6; EC 3.4.22.62; CASP-9; APAF3.
Calculated MW	Calculated MW: 46 kDa, Observed MW: 46 kDa
Uniprot ID	P55211
Gene ID	842
Background	Caspase-9 (ICE-LAP6, Mch6) is an important member of the cysteine aspartic acid protease (caspase) family. Upon apoptotic stimulation, cytochrome c released from mitochondria associates with the 47 kDa procaspase-9/Apaf 1. Apaf-1 mediated activation of caspase-9 involves intrinsic proteolytic processing resulting in cleavage at Asp315 and producing a p35 subunit.



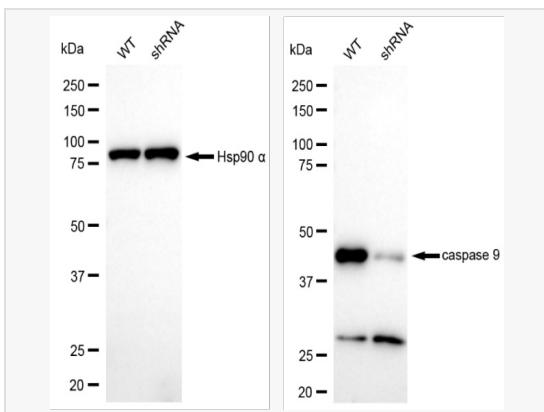
Flow cytometric analysis of Caspase 9 expression in HepG2 cells using Caspase 9 antibody (R020873, 1:2,000). Green, isotype control; red, Caspase 9.



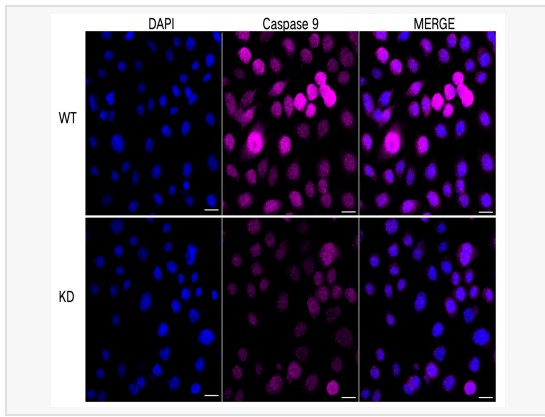
Immunocytochemical staining of HepG2 cells with Caspase 9 antibody (R020873, 1:1,000). Nuclei were stained blue with DAPI; Caspase 9 was stained magenta with Alexa Fluor® 647. Images were taken using Leica stellaris 5. Protein abundance based on laser Intensity and smart gain: Low. Scale bar, 20 µm.



Western blotting analysis using caspase 9 antibody (R020873). Total cell lysates (30 µg) from various cell lines were loaded and separated by SDS-PAGE. The blot was incubated with caspase 9 antibody (R020873, 1:5,000) and HRP-conjugated goat anti-rabbit secondary antibody (1:20,000) respectively. Image was developed using ECL Substrate Kit.



Western blotting analysis using caspase 9 antibody (R020873). Caspase 9 expression in wild type (WT) and caspase 9 (CASP9) shRNA knockdown (KD) C2C12 cells with 20 µg of total cell lysates. Hsp90 α serves as a loading control. The blot was incubated with caspase 9 antibody (R020873, 1:5,000) and HRP-conjugated goat anti-rabbit secondary antibody (1:20,000) respectively. Image was developed using ECL Substrate Kit.



Immunocytochemical staining of HeLa cells using Caspase 9 antibody (R020873, 1:1,000), Top panel: wild-type (WT); Bottom panel: Caspase 9 shRNA knockdown (KD). Nuclei were stained blue with DAPI; Caspase 9 was stained magenta with Alexa Fluor® 647. Scale bar, 20 μ m.