

[KD Validated] Anti-CCNB1 Rabbit mAb

Purified Recombinant Rabbit Monoclonal Antibody

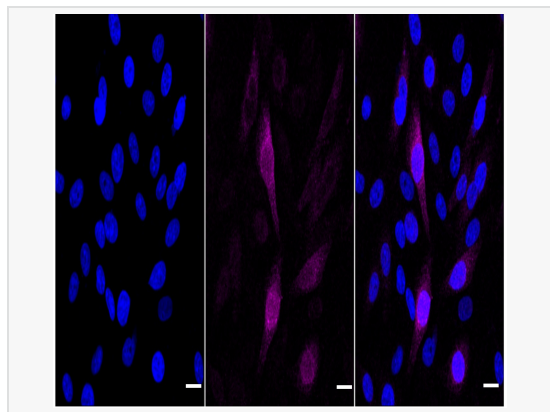
Catalog # R020868

Product Information

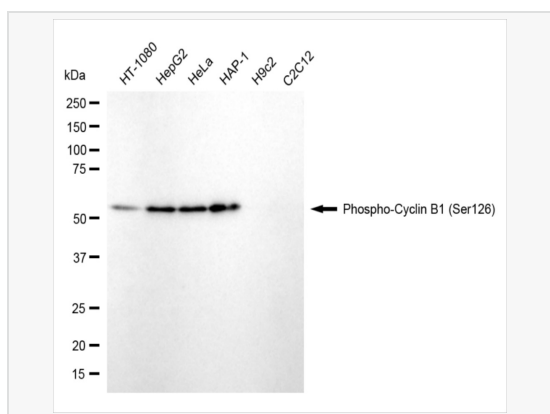
Application	WB, IF (Cell)/ICC
Reactivity	Human
Dilution	WB 1:1,000~1:5,000; IF 1:100~1:1,000
Host	Rabbit
Clonality	Monoclonal
Clone No.	55D60N08
Isotype	IgG
Label	Unconjugated
Immunogen	A synthesized peptide derived from human Phospho-Cyclin B1 (Ser126)
Format	Affinity purified monoclonal antibody supplied in PBS with 0.02% sodium azide and 50% glycerol, pH 7.3.
Storage	Shipped on wet ice. Store at -20°C. Stable for 12 months from date of receipt. Aliquoting is unnecessary for -20°C storage.
Precautions	[KD Validated] Anti-CCNB1 Rabbit mAb [55D60N08] is for research use only and not for use in diagnostic or therapeutic procedures.

Protein Information

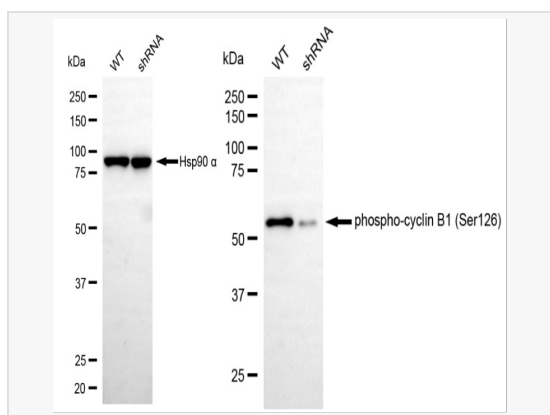
Synonyms	CCNB1; Cyclin B1; CCNB; G2/Mitotic-Specific Cyclin-B1; G2/Mitotic-Specific Cyclin B1.
Calculated MW	Calculated MW: 48 kDa, Observed MW: 55 kDa
Uniprot ID	P14635
Gene ID	891
Background	Essential for the control of the cell cycle at the G2/M (mitosis) transition. a member of the highly conserved cyclin family, whose members are characterized by a dramatic periodicity in protein abundance through the cell cycle. Cyclins function as regulators of CDK kinases.



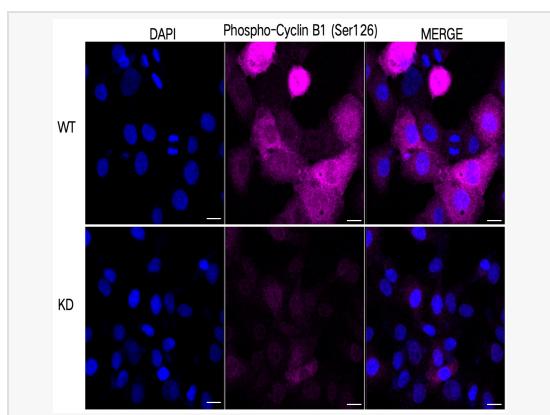
Immunocytochemical staining of HepG2 cells with phospho-cyclin B1 (Ser126) antibody (R020868, 1:1,000). Nuclei were stained blue with DAPI; Phospho-cyclin B1 (Ser126) was stained magenta with Alexa Fluor® 647. Images were taken using Leica stellaris 5. Protein abundance based on laser Intensity and smart gain: Medium. Scale bar: 20 µm.



Western blotting analysis using phospho-cyclin B1 (Ser126) antibody (R020868). Total cell lysates (30 µg) from various cell lines were loaded and separated by SDS-PAGE. The blot was incubated with phospho-cyclin B1 (Ser126) antibody (R020868, 1:5,000) and HRP-conjugated goat anti-rabbit secondary antibody (1:20,000) respectively. Image was developed using ECL Substrate Kit.



Western blotting analysis using phospho-cyclin B1 (Ser126) antibody (R020868). Phospho-cyclin B1 (Ser126) expression in wild type (WT) and CCNB1 shRNA knockdown (KD) HT-1080 cells with 20 µg of total cell lysates. Hsp90 α serves as a loading control. The blot was incubated with phospho-cyclin B1 (Ser126) antibody (R020868, 1:5,000) and HRP-conjugated goat anti-rabbit secondary antibody (1:20,000) respectively. Image was developed using ECL Substrate Kit.



Immunocytochemical staining of HT-1080 cells using Phospho-Cyclin B1 (Ser126) antibody (R020868, 1:1,000). Top panel: wild-type (WT); Bottom panel: Phospho-Cyclin B1 (Ser126) shRNA knockdown (KD). Nuclei were stained blue with DAPI; Phospho-Cyclin B1 (Ser126) was stained magenta with Alexa Fluor® 647. Scale bar, 20 µm.