

[KD Validated] Anti-CDK2 Rabbit mAb

Purified Recombinant Rabbit Monoclonal Antibody

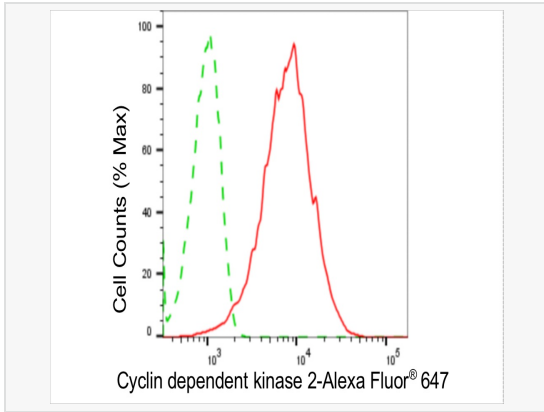
Catalog # R020867

Product Information

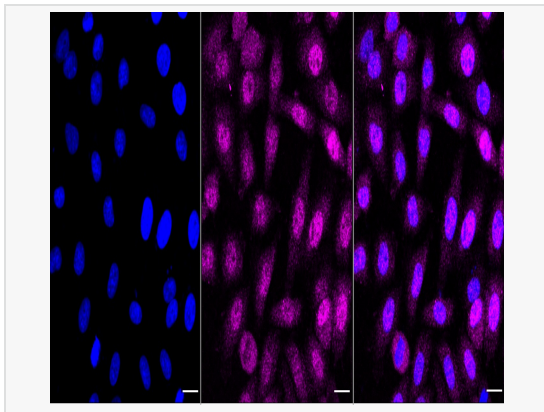
Application	WB, FC, IF (Cell)/ICC
Reactivity	Human, Mouse, Rat
Dilution	WB 1:1,000~1:5,000; FC 1:200~1:2,000; IF 1:100~1:1,000
Host	Rabbit
Clonality	Monoclonal
Clone No.	15T98S64
Isotype	IgG
Label	Unconjugated
Immunogen	A synthesized peptide derived from human Cdk2
Format	Affinity purified monoclonal antibody supplied in PBS with 0.02% sodium azide and 50% glycerol, pH 7.3.
Storage	Shipped on wet ice. Store at -20°C. Stable for 12 months from date of receipt. Aliquoting is unnecessary for -20°C storage.
Precautions	[KD Validated] Anti-CDK2 Rabbit mAb [15T98S64] is for research use only and not for use in diagnostic or therapeutic procedures.

Protein Information

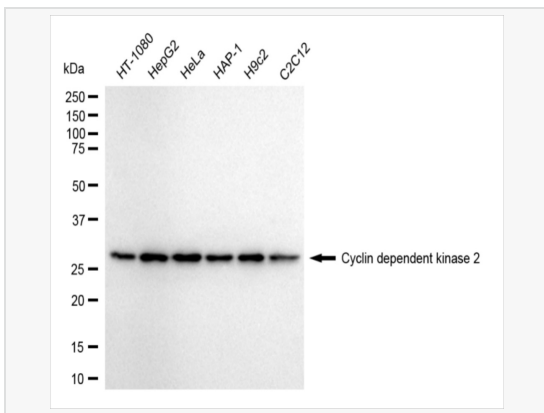
Synonyms	CDK2; Cyclin Dependent Kinase 2; Cell Division Protein Kinase 2; Cyclin-Dependent Kinase 2; P33 Protein Kinase; EC 2.7.11.22; CDKN2; Cdc2-Related Protein Kinase; P33(CDK2); EC 2.7.11.
Calculated MW	Calculated MW: 34 kDa, Observed MW: 34 kDa
Uniprot ID	P24941
Gene ID	1017
Background	The protein encoded by this gene is a member of the Ser/Thr protein kinase family. This protein is a catalytic subunit of the highly conserved protein kinase complex known as M-phase promoting factor (MPF), which is essential for G1/S and G2/M phase transitions of eukaryotic cell cycle.



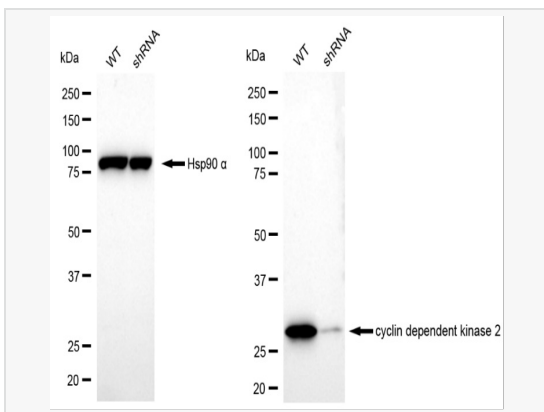
Flow cytometric analysis of cyclin dependent kinase 2 expression in HepG2 cells using cyclin dependent kinase 2 antibody (R020867, 1:2,000). Green, isotype control; red, cyclin dependent kinase 2.



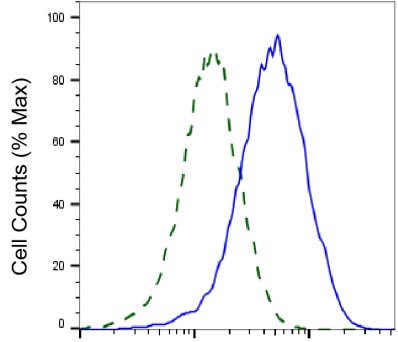
Immunocytochemical staining of HepG2 cells with Cyclin dependent kinase 2 antibody(R020867, 1:1,000) . Nuclei were stained blue with DAPI; Cyclin dependent kinase 2 was stained magenta with Alexa Fluor® 647. Images were taken using Leica stellaris 5. Protein abundance based on laser Intensity and smart gain: Medium. Scale bar, 20 μm.



Western blotting analysis using cyclin dependent kinase 2 antibody (R020867). Total cell lysates (30 μg) from various cell lines were loaded and separated by SDS-PAGE. The blot was incubated with cyclin dependent kinase 2 antibody (R020867, 1:5,000) and HRP-conjugated goat anti-rabbit secondary antibody (1:20,000) respectively. Image was developed using ECL Substrate Kit.



Western blotting analysis using cyclin dependent kinase 2 antibody (R020867). Cyclin dependent kinase 2 expression in wild type (WT) and cyclin dependent kinase 2 (CDK2) shRNA knockdown (KD) HeLa cells with 20 μg of total cell lysates. β-Tubulin serves as a loading control. The blot was incubated with cyclin dependent kinase 2 antibody (R020867, 1:5,000) and HRP-conjugated goat anti-rabbit secondary antibody (1:20,000) respectively. Image was developed using ECL Substrate Kit.



Cyclin dependent kinase 2-Alexa Fluor® 647

Validation of Cyclin dependent kinase 2 knockdown using flow cytometry. Wild-type(WT, Blue) and knockdown(KD, Green) HeLa cells were stained with Cyclin dependent kinase 2 antibody (R020867, 1:2,000) and analyzed using BD flow cytometer.