

[KD Validated] Anti-BECN1 Rabbit mAb

Purified Recombinant Rabbit Monoclonal Antibody

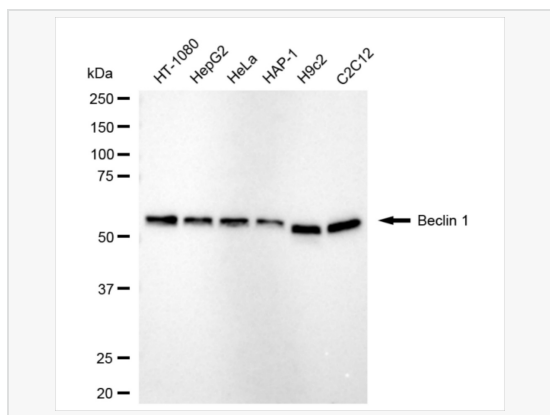
Catalog # R020845

Product Information

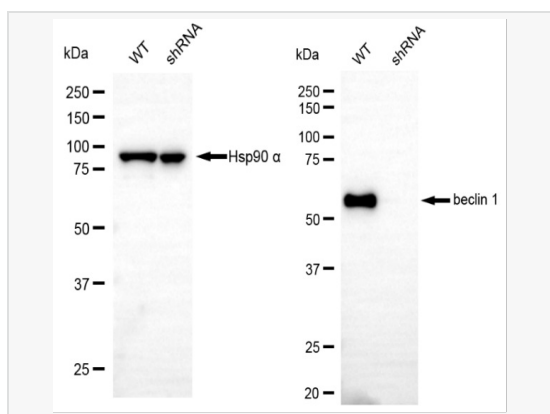
Application	WB, FC
Reactivity	Human, Mouse, Rat
Dilution	WB 1:1,000~1:5,000; FC 1:200~1:2,000
Host	Rabbit
Clonality	Monoclonal
Clone No.	48F35K04
Isotype	IgG
Label	Unconjugated
Immunogen	Recombinant protein of human Beclin 1
Format	Affinity purified monoclonal antibody supplied in PBS with 0.02% sodium azide and 50% glycerol, pH 7.3.
Storage	Shipped on wet ice. Store at -20°C. Stable for 12 months from date of receipt. Aliquoting is unnecessary for -20°C storage.
Precautions	[KD Validated] Anti-BECN1 Rabbit mAb [48F35K04] is for research use only and not for use in diagnostic or therapeutic procedures.

Protein Information

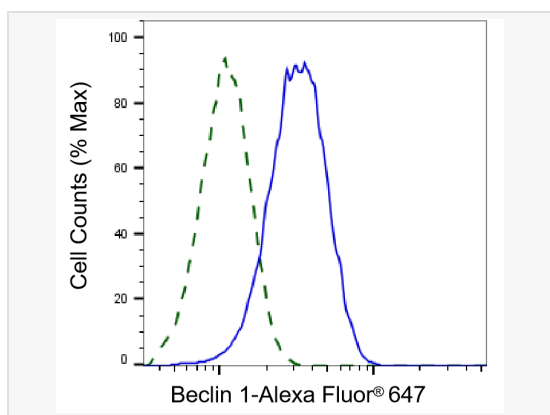
Synonyms	BECN1; Beclin 1; VPS30; ATG6; Coiled-Coil Myosin-Like BCL2-Interacting Protein; Beclin 1, Autophagy Related; Beclin-1; Beclin 1 (Coiled-Coil, Moesin-Like BCL2 Interacting Protein); Beclin 1 (Coiled-Coil, Moesin-Like BCL2-Interacting Protein); ATG6 Autophagy Related 6 Homolog (S. Cerevisiae); Testis Secretory Sperm-Binding Protein Li 215e; ATG6 Autophagy Related 6 Homolog; Beclin1-Gamma; Protein GT197; Beclin1-Beta; Beclin1; GT197.
Calculated MW	Calculated MW: 52 kDa, Observed MW: 60 kDa
Uniprot ID	Q14457
Gene ID	8678
Background	Plays a central role in autophagy. Required for the abscission step in cytokinesis. May play a role in antiviral host defense. Protects against infection by a neurovirulent strain of Sindbis virus.



Western blotting analysis using beclin 1 antibody (R020845). Total cell lysates (30 μ g) from various cell lines were loaded and separated by SDS-PAGE. The blot was incubated with beclin 1 antibody (R020845, 1:5,000) and HRP-conjugated goat anti-rabbit secondary antibody (1:20,000) respectively. Image was developed using ECL Substrate Kit.



Western blotting analysis using beclin 1 antibody (R020845). Beclin 1 expression in wild type (WT) and beclin 1 (BECN1) shRNA knockdown (KD) HeLa cells with 20 μ g of total cell lysates. Hsp90 α serves as a loading control. The blot was incubated with beclin 1 antibody (R020845, 1:5,000) and HRP-conjugated goat anti-rabbit secondary antibody (1:20,000) respectively. Image was developed using ECL Substrate Kit.



Validation of Beclin 1 knockdown using flow cytometry. Wild-type(WT, Blue) and knockdown(KD, Green) HeLa cells were stained with Beclin 1 antibody (R020845, 1:2,000) and analyzed using BD flow cytometer.