

[KD Validated] Anti-CFL1 Rabbit mAb

Purified Recombinant Rabbit Monoclonal Antibody

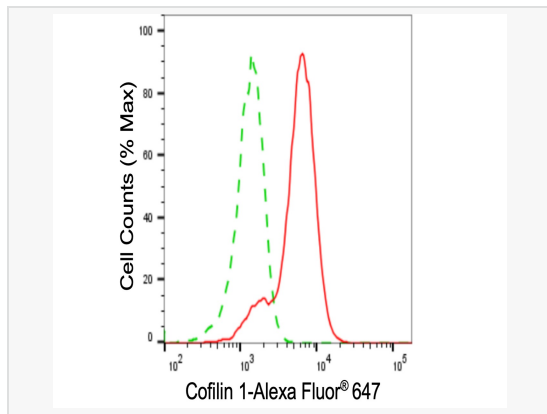
Catalog # R020817

Product Information

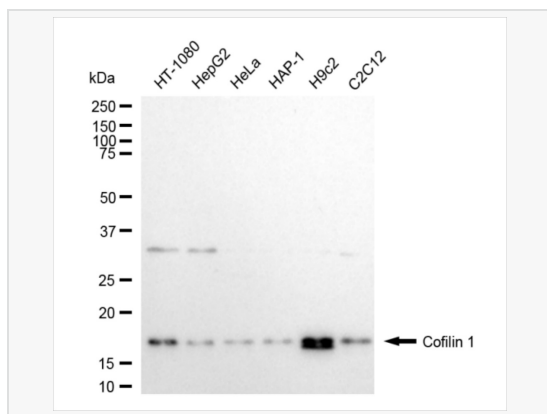
Application	WB, FC
Reactivity	Human, Mouse, Rat
Dilution	WB 1:1,000~1:5,000; FC 1:200~1:2,000
Host	Rabbit
Clonality	Monoclonal
Clone No.	21C99S85
Isotype	IgG
Label	Unconjugated
Immunogen	A synthesized peptide derived from human Cofilin
Format	Affinity purified monoclonal antibody supplied in PBS with 0.02% sodium azide and 50% glycerol, pH 7.3.
Storage	Shipped on wet ice. Store at -20°C. Stable for 12 months from date of receipt. Aliquoting is unnecessary for -20°C storage.
Precautions	[KD Validated] Anti-CFL1 Rabbit mAb [21C99S85] is for research use only and not for use in diagnostic or therapeutic procedures.

Protein Information

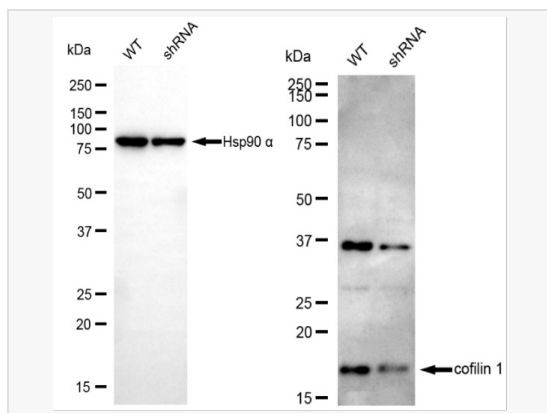
Synonyms	CFL1; Cofilin 1; CFL; Cofilin 1 (Non-Muscle); 18 kDa Phosphoprotein; Cofilin-1; P18; Epididymis Secretory Protein Li 15; Cofilin, Non-Muscle Isoform; HEL-S-15; Cofilin.
Calculated MW	Calculated MW: 19 kDa, Observed MW: 19 kDa
Uniprot ID	P23528
Gene ID	1072
Background	The protein encoded by this gene can polymerize and depolymerize F-actin and G-actin in a pH-dependent manner. Increased phosphorylation of this protein by LIM kinase aids in Rho-induced reorganization of the actin cytoskeleton. Cofilin is a widely distributed intracellular actin-modulating protein that binds and depolymerizes filamentous F-actin and inhibits the polymerization of monomeric G-actin in a pH-dependent manner. It is involved in the translocation of actin-cofilin complex from cytoplasm to nucleus.[supplied by OMIM, Apr 2004]



Flow cytometric analysis of cofilin 1 expression in H9c2 cells using cofilin 1 antibody (R020817, 1:2,000). Green, isotype control; red, cofilin 1.



Western blotting analysis using cofilin 1 antibody (R020817). Total cell lysates (30 μ g) from various cell lines were loaded and separated by SDS-PAGE. The blot was incubated with cofilin 1 antibody (R020817, 1:5,000) and HRP-conjugated goat anti-rabbit secondary antibody (1:20,000) respectively. Image was developed using ECL Substrate Kit.



Western blotting analysis using cofilin 1 antibody (R020817). Cofilin 1 expression in wild type (WT) and cofilin 1 (CFL1) shRNA knockdown (KD) HeLa cells with 20 μ g of total cell lysates. β -Tubulin serves as a loading control. The blot was incubated with cofilin 1 antibody (R020817, 1:5,000) and HRP-conjugated goat anti-rabbit secondary antibody (1:20,000) respectively. Image was developed using ECL Substrate Kit.