

[KD Validated] Anti-DFFA Rabbit mAb

Purified Recombinant Rabbit Monoclonal Antibody

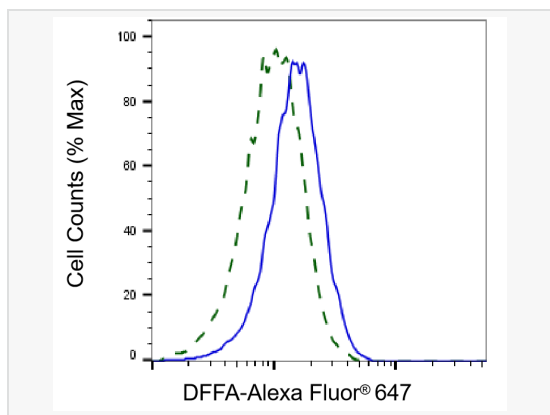
Catalog # R020813

Product Information

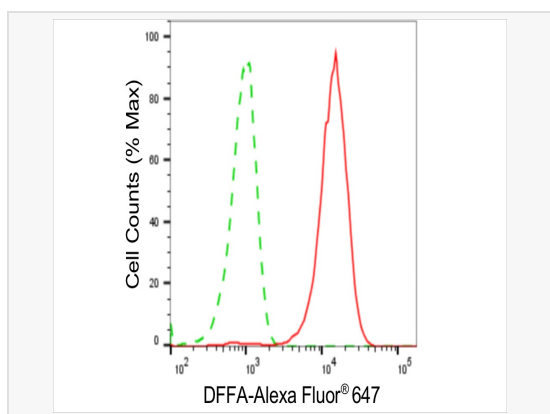
Application	WB, FC, IF (Cell)/ICC
Reactivity	Human
Dilution	WB 1:1,000~1:5,000; FC 1:200~1:2,000; IF 1:100~1:1,000
Host	Rabbit
Clonality	Monoclonal
Clone No.	93G79T78
Isotype	IgG
Label	Unconjugated
Immunogen	A synthesized peptide derived from human ICAD
Format	Affinity purified monoclonal antibody supplied in PBS with 0.02% sodium azide and 50% glycerol, pH 7.3.
Storage	Shipped on wet ice. Store at -20°C. Stable for 12 months from date of receipt. Aliquoting is unnecessary for -20°C storage.
Precautions	[KD Validated] Anti-DFFA Rabbit mAb [93G79T78] is for research use only and not for use in diagnostic or therapeutic procedures.

Protein Information

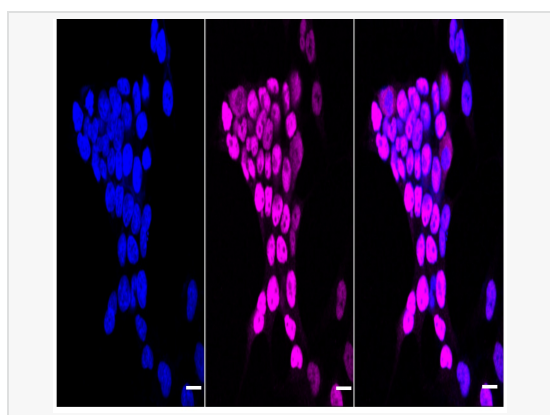
Synonyms	DFFA; DNA Fragmentation Factor Subunit Alpha; DFF-45; DFF45; ICAD; DFF1; DNA Fragmentation Factor, 45kDa, Alpha Polypeptide; DNA Fragmentation Factor 45KDa Subunit; Inhibitor Of CAD; DNA Fragmentation Factor, 45 KD, Alpha Polypeptide; DNA Fragmentation Factor, 45 KD, Alpha Subunit.
Calculated MW	Calculated MW: 37 kDa, Observed MW: 40 kDa
Uniprot ID	O00273
Gene ID	1676
Background	Inhibitor of the caspase-activated DNase (DFF40).



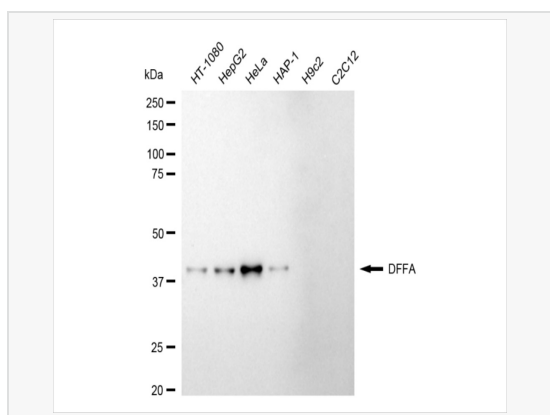
Validation of DFFA knockdown using flow cytometry. Wild-type(WT, Blue) and knockdown(KD, Green) HeLa cells were stained with DFFA antibody (R020813, 1:2,000) and analyzed using BD flow cytometer.



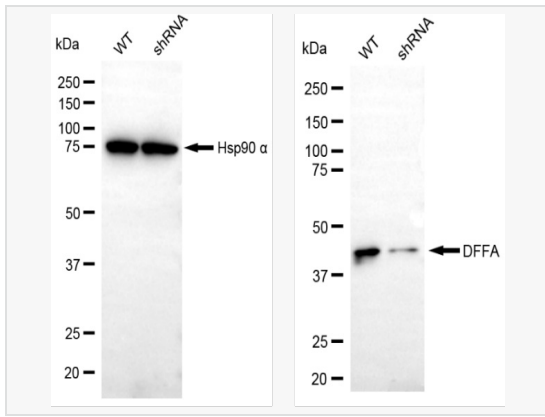
Flow cytometric analysis of DFFA expression in HeLa cells using DFFA antibody (R020813, 1:2,000). Green, isotype control; red, DFFA.



Immunocytochemical staining of HeLa cells with DFFA antibody (R020813, 1:1,000). Nuclei were stained blue with DAPI; DFFA was stained magenta with Alexa Fluor® 647. Images were taken using Leica stellaris 5. Protein abundance based on laser Intensity and smart gain: High. Scale bar: 20 μ m.



Western blotting analysis using DFFA antibody (R020813). Total cell lysates (30 μ g) from various cell lines were loaded and separated by SDS-PAGE. The blot was incubated with DFFA antibody (R020813, 1:5,000) and HRP-conjugated goat anti-rabbit secondary antibody (1:20,000) respectively. Image was developed using ECL Substrate Kit. DFFA, DNA fragmentation factor subunit alpha.



Western blotting analysis using DFFA antibody (R020813). DFFA expression in wild-type (WT) and DFFA shRNA knockdown (KD) HeLa cells with 20 μ g of total cell lysates. Hsp90 α serves as a loading control. The blot was incubated with DFFA antibody (R020813, 1:5,000) and HRP-conjugated goat anti-rabbit secondary antibody (1:20,000) respectively. Image was developed using ECL Substrate Kit.