

[KD Validated] Anti-LRP1 Rabbit mAb

Purified Recombinant Rabbit Monoclonal Antibody

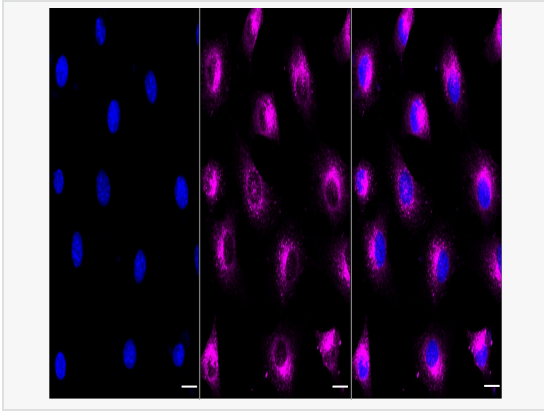
Catalog # R020806

Product Information

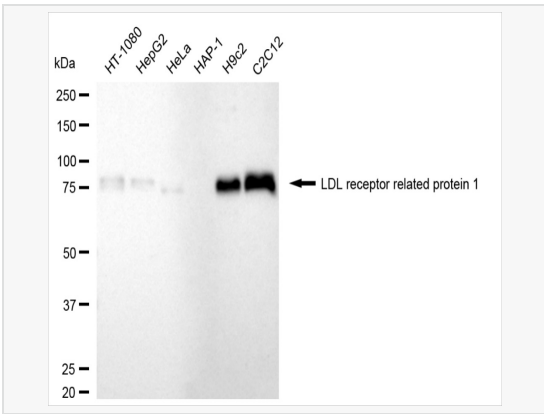
Application	WB, FC, IF (Cell)/ICC
Reactivity	Human, Mouse, Rat
Dilution	WB 1:1,000~1:5,000; FC 1:200~1:2,000; IF 1:100~1:1,000
Host	Rabbit
Clonality	Monoclonal
Clone No.	59S81S22
Isotype	IgG
Label	Unconjugated
Immunogen	A synthesized peptide derived from human LRP1
Format	Affinity purified monoclonal antibody supplied in PBS with 0.02% sodium azide and 50% glycerol, pH 7.3.
Storage	Shipped on wet ice. Store at -20°C. Stable for 12 months from date of receipt. Aliquoting is unnecessary for -20°C storage.
Precautions	[KD Validated] Anti-LRP1 Rabbit mAb [59S81S22] is for research use only and not for use in diagnostic or therapeutic procedures.

Protein Information

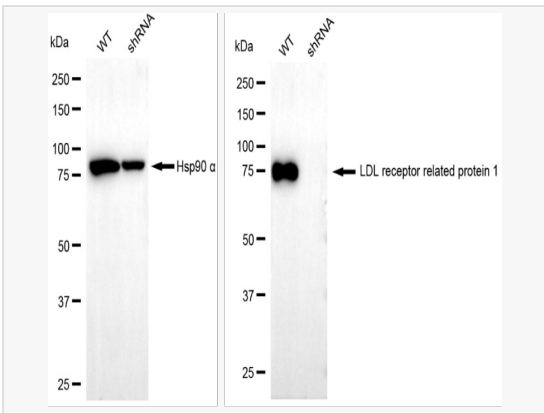
Synonyms	LRP1; LDL Receptor Related Protein 1; APOER; Alpha-2-Macroglobulin Receptor; IGFBP3R1; IGFBP-3R; LRP1A; CD91; A2MR; LRP; APR; Prolow-Density Lipoprotein Receptor-Related Protein 1; Low Density Lipoprotein Receptor-Related Protein 1; Apolipoprotein E Receptor; Transforming Growth Factor-β Receptor Type V; TbetaR-V/LRP-1/IGFBP-3 Receptor; Type V Tgf-Beta Receptor; CD91 Antigen; EC 3.4.21.9; EC 1.1.1.94; IGFBP3R; TGFBRS; LRP-1; KPA.
Calculated MW	Calculated MW: 505 kDa, Observed MW: 85 kDa
Uniprot ID	Q07954
Gene ID	4035
Background	Endocytic receptor involved in endocytosis and in phagocytosis of apoptotic cells. Required for early embryonic development. Involved in cellular lipid homeostasis. Involved in the plasma clearance of chylomicron remnants and activated LRPAP1 (alpha 2-macroglobulin), as well as the local metabolism of complexes between plasminogen activators and their endogenous inhibitors. May modulate cellular events, such as APP metabolism, kinase-dependent intracellular signaling, neuronal calcium signaling as well as neurotransmission. Functions as a receptor for Pseudomonas aeruginosa exotoxin A.



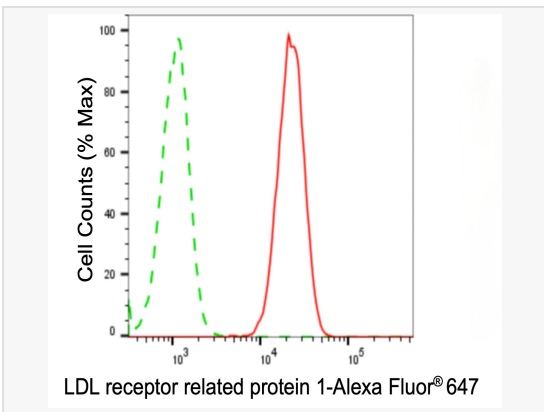
Immunocytochemical staining of C2C12 cells with LDL receptor related protein 1 antibody (R020806, 1:1,000) . Nuclei were stained blue with DAPI; LDL receptor related protein 1 was stained magenta with Alexa Fluor® 647. Images were taken using Leica stellaris 5. Protein abundance based on laser Intensity and smart gain: High. Scale bar, 20 µm.



Western blotting analysis using LDL receptor related protein 1 antibody (R020806). Total cell lysates (30 µg) from various cell lines were loaded and separated by SDS-PAGE. The blot was incubated with LDL receptor related protein 1 antibody (R020806, 1:5,000) and HRP-conjugated goat anti-rabbit secondary antibody (1:20,000) respectively. Image was developed using ECL Substrate Kit.



Western blotting analysis using LDL receptor related protein 1 antibody (R020806). LDL receptor related protein 1 expression in wild type (WT) and LDL receptor related protein 1 (LRP1) shRNA knockdown (KD) HeLa cells with 20 µg of total cell lysates. Hsp90 α serves as a loading control. The blot was incubated with LDL receptor related protein 1 antibody (R020806, 1:5,000) and HRP-conjugated goat anti-rabbit secondary antibody (1:20,000) respectively. Image was developed using ECL Substrate Kit.



Flow cytometric analysis of LDL receptor related protein 1 expression in C2C12 cells using LDL receptor related protein 1 antibody (R020806, 1:2,000). Green, isotype control; red, LDL receptor related protein 1.