

[KD Validated] Anti-PTPN11 Rabbit mAb

Purified Recombinant Rabbit Monoclonal Antibody

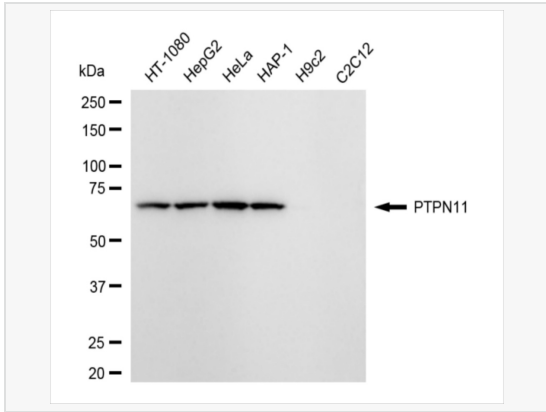
Catalog # R020798

Product Information

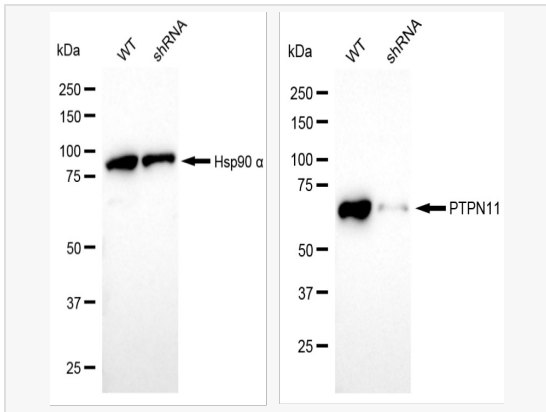
Application	WB, FC, IF (Cell)/ICC
Reactivity	Human
Dilution	WB 1:1,000~1:5,000; FC 1:200~1:2,000; IF 1:100~1:1,000
Host	Rabbit
Clonality	Monoclonal
Clone No.	83T38D99
Isotype	IgG
Label	Unconjugated
Immunogen	A synthesized peptide derived from human SHP2
Format	Affinity purified monoclonal antibody supplied in PBS with 0.02% sodium azide and 50% glycerol, pH 7.3.
Storage	Shipped on wet ice. Store at -20°C. Stable for 12 months from date of receipt. Aliquoting is unnecessary for -20°C storage.
Precautions	[KD Validated] Anti-PTPN11 Rabbit mAb [83T38D99] is for research use only and not for use in diagnostic or therapeutic procedures.

Protein Information

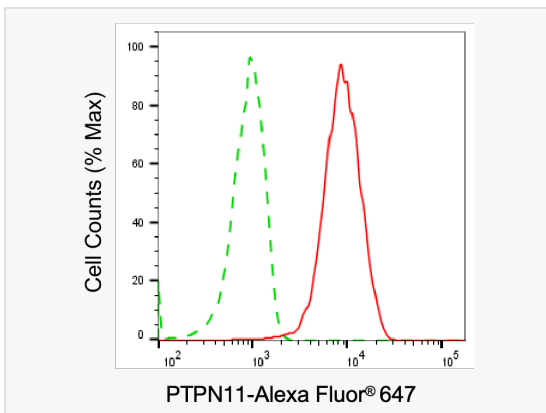
Synonyms	PTPN11; Protein Tyrosine Phosphatase Non-Receptor Type 11; SH-PTP2; PTP2C; BPTP3; SHP-2; SHP2; SH2 Domain-Containing Protein Tyrosine Phosphatase 2; Tyrosine-Protein Phosphatase Non-Receptor Type 11; Protein-Tyrosine Phosphatase 1D; Protein-Tyrosine Phosphatase 2C; EC 3.1.3.48; SH-PTP3; PTP-1D; NS1; Protein Tyrosine Phosphatase, Non-Receptor Type 11; Noonan Syndrome 1; METCDS; SHPTP2; PTP-2C; JMML; Shp2; CFC.
Calculated MW	Calculated MW: 68 kDa, Observed MW: 68 kDa
Uniprot ID	Q06124
Gene ID	5781
Background	SHP-2 a SH2-containing a ubiquitously expressed tyrosine-specific protein phosphatase. It participates in signaling events downstream of receptors for growth factors, cytokines, hormones, antigens and extracellular matrices in the control of cell growth, differentiation, migration, and death.



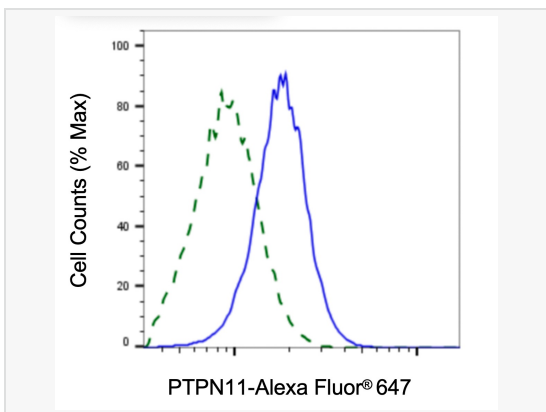
Western blotting analysis using PTPN11 antibody (R020798). Total cell lysates (30 μ g) from various cell lines were loaded and separated by SDS-PAGE. The blot was incubated with PTPN11 antibody (R020798, 1:5,000) and HRP-conjugated goat anti-rabbit secondary antibody (1:20,000) respectively. Image was developed using ECL Substrate Kit. PTPN11, protein tyrosine phosphatase non-receptor type 11.



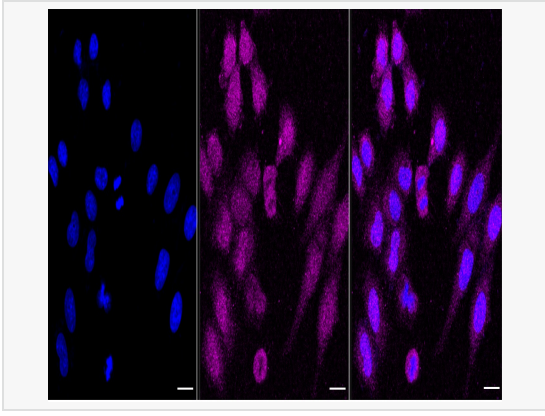
Western blotting analysis using PTPN11 antibody (R020798). PTPN11 expression in wild type (WT) and PTPN11 shRNA knockdown (KD) HeLa cells with 20 μ g of total cell lysates. Hsp90 α serves as a loading control. The blot was incubated with PTPN11 antibody (R020798, 1:5,000) and HRP-conjugated goat anti-rabbit secondary antibody (1:20,000) respectively. Image was developed using ECL Substrate Kit.



Flow cytometric analysis of PTPN11 expression in HepG2 cells using PTPN11 antibody (R020798, 1:2,000). Green, isotype control; red, PTPN11.



Validation of PTPN11 knockdown using flow cytometry. Wild-type (WT, Blue) and knockdown (KD, Green) HeLa cells were stained with PTPN11 antibody (R020798, 1:2,000) and analyzed using BD flow cytometer.



Immunocytochemical staining of HepG2 cells with PTPN11 protein antibody(R020798, 1:1,000). Nuclei were stained blue with DAPI; PTPN11 was stained magenta with Alexa Fluor® 647. Images were taken using Leica stellaris 5. Protein abundance based on laser Intensity and smart gain: Medium. Scale bar, 20 μm .