

[KD Validated] Anti-RELB Rabbit mAb

Purified Recombinant Rabbit Monoclonal Antibody

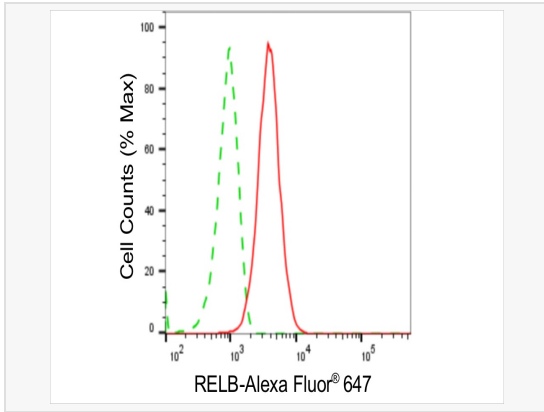
Catalog # R020797

Product Information

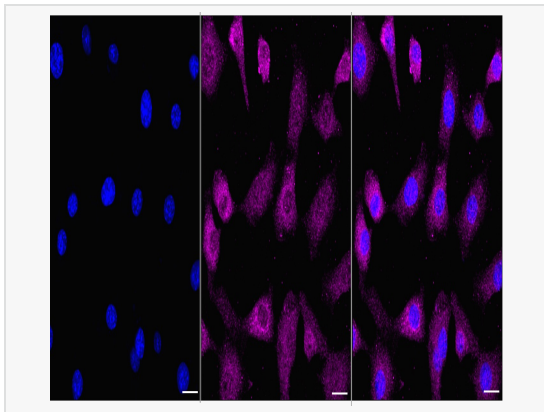
Application	WB, FC, IF (Cell)/ICC
Reactivity	Human, Mouse, Rat
Dilution	WB 1:1,000~1:5,000; FC 1:200~1:2,000; IF 1:100~1:1,000
Host	Rabbit
Clonality	Monoclonal
Clone No.	20H12C30
Isotype	IgG
Label	Unconjugated
Immunogen	A synthesized peptide derived from human Rel B
Format	Affinity purified monoclonal antibody supplied in PBS with 0.02% sodium azide and 50% glycerol, pH 7.3.
Storage	Shipped on wet ice. Store at -20°C. Stable for 12 months from date of receipt. Aliquoting is unnecessary for -20°C storage.
Precautions	[KD Validated] Anti-RELB Rabbit mAb [20H12C30] is for research use only and not for use in diagnostic or therapeutic procedures.

Protein Information

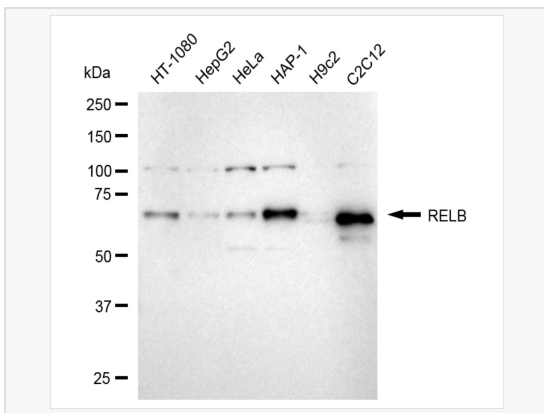
Synonyms	RELB; RELB Proto-Oncogene, NF- κ B Subunit; REL-B; V-Rel Avian Reticuloendotheliosis Viral Oncogene Homolog B (Nuclear Factor Of Kappa Light Polypeptide Gene Enhancer In B-Cells 3); Transcription Factor RelB ; V-Rel Reticuloendotheliosis Viral Oncogene Homolog B, Nuclear Factor Of Kappa Light Polypeptide Gene Enhancer In B-Cells 3; I-REL; IMD53; I-Rel; IREL.
Calculated MW	Calculated MW: 62 kDa, Observed MW: 70 kDa
Uniprot ID	Q01201
Gene ID	5971
Background	Transcription factors of the nuclear factor κ B (NF- κ B)/Rel family play a pivotal role in inflammatory and immune responses. Involved in many biological processes such as inflammation, immunity, differentiation, cell growth, tumorigenesis and apoptosis.



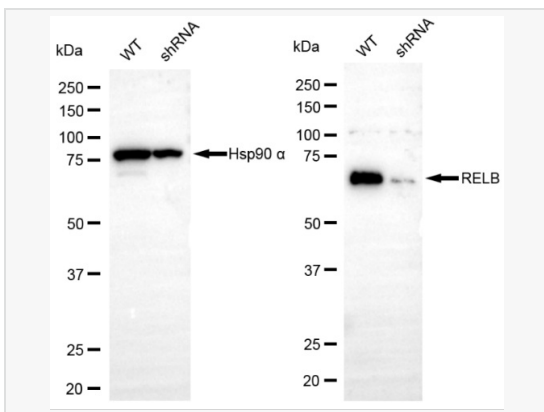
Flow cytometric analysis of RELB expression in C2C12 cells using RELB antibody (R020797, 1:2,000). Green, isotype control; red, RELB.



Immunocytochemical staining of C2C12 cells with RELB antibody (R020797, 1:1,000). Nuclei were stained blue with DAPI; RELB was stained magenta with Alexa Fluor® 647. Images were taken using Leica stellaris 5. Protein abundance based on laser Intensity and Smart Gain: Medium. Scale bar, 20 µm.



Western blotting analysis using RELB antibody (R020797). Total cell lysates (30 µg) from various cell lines were loaded and separated by SDS-PAGE. The blot was incubated with RELB antibody (R020797, 1:5,000) and HRP-conjugated goat anti-rabbit secondary antibody (1:20,000) respectively. Image was developed using ECL Substrate Kit.



Western blotting analysis using RELB antibody (R020797). RELB expression in wild-type (WT) and RELB shRNA knockdown (KD) HT-1080 cells with 20 µg of total cell lysates. Hsp90 α serves as a loading control. The blot was incubated with RELB antibody (R020797, 1:5,000) and HRP-conjugated goat anti-rabbit secondary antibody (1:20,000) respectively. Image was developed using ECL Substrate Kit.