

[KD Validated] Anti-JUN Mouse mAb

Purified Recombinant Rabbit Monoclonal Antibody

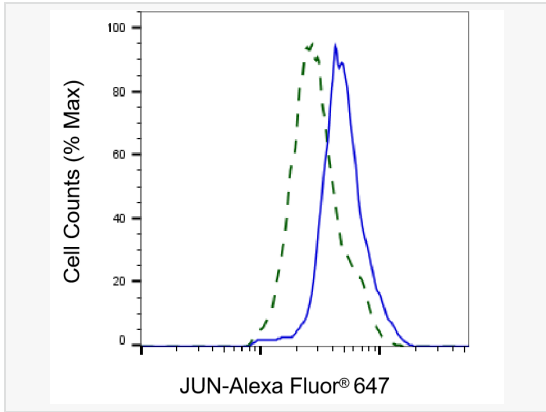
Catalog # M020756

Product Information

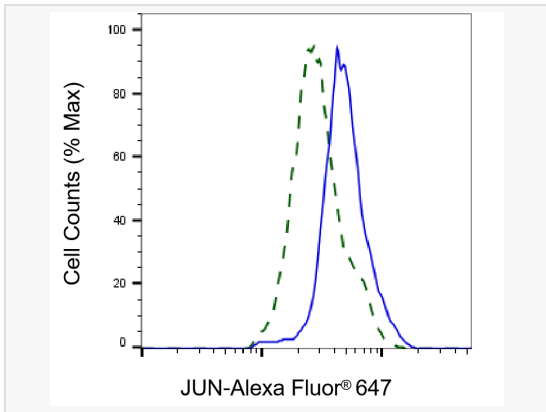
Application	WB, FC, IF (Cell)/ICC
Reactivity	Human, Mouse, Rat
Dilution	WB 1:500~1:2,500; FC 1:200~1:2,000; IF 1:100~1:1,000
Host	Mouse
Clonality	Monoclonal
Clone No.	93R33F52
Isotype	IgG
Label	Unconjugated
Immunogen	Recombinant protein of human JUN
Format	Affinity purified monoclonal antibody supplied in PBS with 0.02% sodium azide and 50% glycerol, pH 7.3.
Storage	Shipped on wet ice. Store at -20°C. Stable for 12 months from date of receipt. Aliquoting is unnecessary for -20°C storage.
Precautions	[KD Validated] Anti-JUN Mouse mAb [93R33F52] is for research use only and not for use in diagnostic or therapeutic procedures.

Protein Information

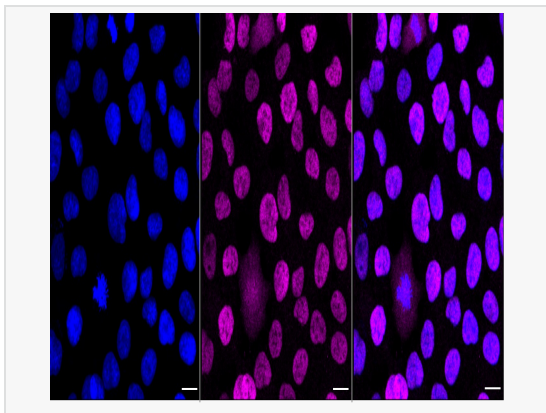
Synonyms	JUN; Jun Proto-Oncogene, AP-1 Transcription Factor Subunit; V-Jun Avian Sarcoma Virus 17 Oncogene Homolog 2; C-Jun; AP-1; Transcription Factor AP-1 Subunit Jun; Transcription Factor Jun; Proto-Oncogene C-Jun; Activator Protein 1; Jun Oncogene; AP1; P39; V-Jun Sarcoma Virus 17 Oncogene Homolog; Jun Activation Domain Binding Protein; Enhancer-Binding Protein AP1; Transcription Factor AP-1; Proto-Oncogene CJun; CJUN.
Calculated MW	Calculated MW: 36 kDa, Observed MW: 40kDa
Uniprot ID	P05412
Gene ID	3725
Background	c-jun is a transcription factor that recognizes and binds to the enhancer heptamer motif 5'-TGA[CG]TCA-3'. Promotes activity of NR5A1 when phosphorylated by HIPK3 leading to increased steroidogenic gene expression upon cAMP signaling pathway stimulation.



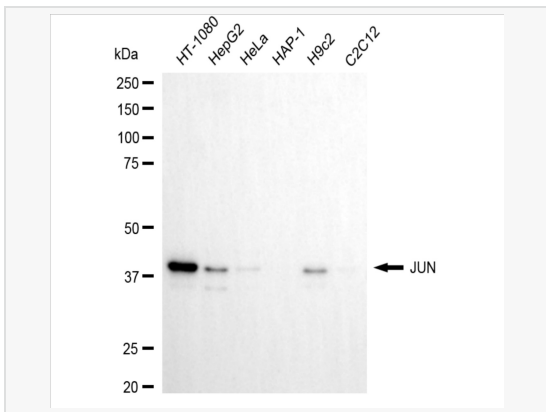
Validation of JUN knockdown using flow cytometry. Wild-type(WT, Blue) and knockdown(KD, Green) C2C12 cells were stained with JUN antibody (M020756, 1:2,000) and analyzed using BD flow cytometer.



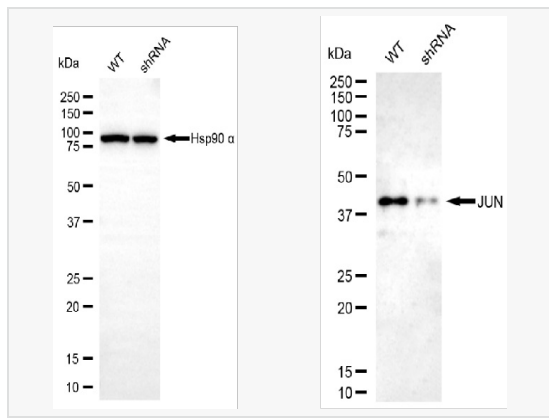
Flow cytometric analysis of JUN expression in HT-1080 cells using JUN antibody (M020756, 1:2,000). Green, isotype control; red, JUN.



Immunocytochemical staining of HT-1080 cells with JUN antibody (M020756, 1:1,000). Nuclei were stained blue with DAPI; JUN was stained magenta with Alexa Fluor® 647. Images were taken using Leica stellaris 5. Protein abundance based on laser Intensity and Smart Gain: Medium. Scale bar, 20 µm.



Western blotting analysis using JUN antibody (M020756). Total cell lysates (30 µg) from various cell lines were loaded and separated by SDS-PAGE. The blot was incubated with JUN antibody (M020756, 1:2,500) and HRP-conjugated goat anti-mouse secondary antibody (1:20,000) respectively. Image was developed using ECL Substrate Kit.



Western blotting analysis using JUN antibody (M020756). JUN expression in wild type (WT) and JUN shRNA knockdown (KD) C2C12 cells with 20 μ g of total cell lysates. Hsp90 α serves as a loading control. The blot was incubated with JUN antibody (M020756, 1:5,000) and HRP-conjugated goat anti-mouse secondary antibody (1:20,000) respectively. Image was developed using ECL Substrate Kit.