

[KD Validated] Anti-GNAQ Rabbit mAb

Purified Recombinant Rabbit Monoclonal Antibody

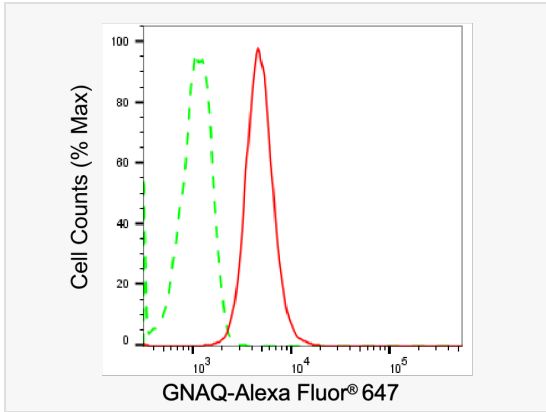
Catalog # R020712

Product Information

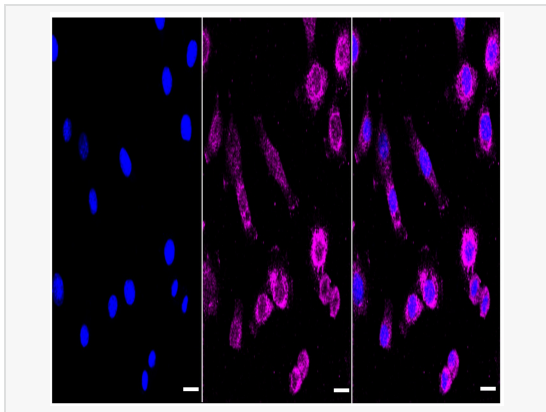
Application	WB, FC, IF (Cell)/ICC
Reactivity	Human, Mouse, Rat
Dilution	WB 1:1,000~1:5,000; FC 1:200~1:2,000; IF 1:100~1:1,000
Host	Rabbit
Clonality	Monoclonal
Clone No.	11S48E33
Isotype	IgG
Label	Unconjugated
Immunogen	A synthesized peptide derived from human GNAQ
Format	Affinity purified monoclonal antibody supplied in PBS with 0.02% sodium azide and 50% glycerol, pH 7.3.
Storage	Shipped on wet ice. Store at -20°C. Stable for 12 months from date of receipt. Aliquoting is unnecessary for -20°C storage.
Precautions	[KD Validated] Anti-GNAQ Rabbit mAb [11S48E33] is for research use only and not for use in diagnostic or therapeutic procedures.

Protein Information

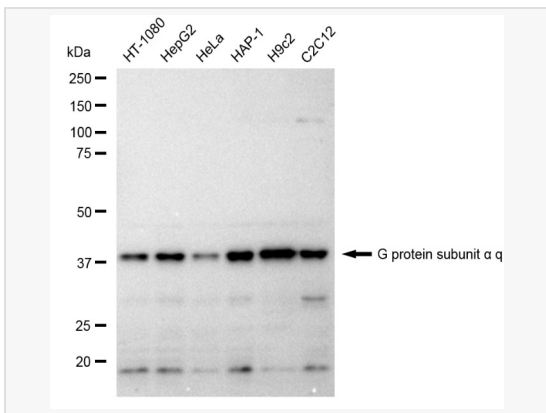
Synonyms	G Protein Subunit Alpha Q; GAQ; G-ALPHA-Q; Guanine Nucleotide Binding Protein (G Protein), Q Polypeptide; Guanine Nucleotide-Binding Protein G(Q) Subunit Alpha; Guanine Nucleotide-Binding Protein Alpha-Q; Epididymis Secretory Sperm Binding Protein; CMAL; CMCI; SWS.
Calculated MW	Calculated MW: 42 kDa, Observed MW: 42 kDa
Uniprot ID	P50148
Gene ID	2776
Background	Guanine nucleotide-binding proteins (G proteins) are involved as modulators or transducers in various transmembrane signaling systems. Regulates B-cell selection and survival and is required to prevent B-cell-dependent autoimmunity. Regulates chemotaxis of BM-derived neutrophils and dendritic cells (in vitro) .



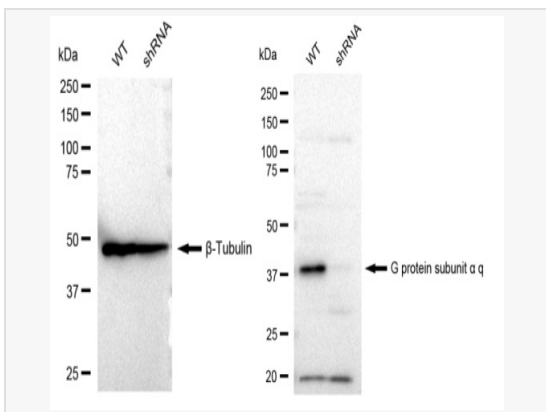
Flow cytometric analysis of GNAQ expression in C2C12 cells using GNAQ antibody (R020712, 1:2,000). Green, isotype control; red, GNAQ.



Immunocytochemical staining of C2C12 cells with G protein subunit alpha q antibody (R020712, 1:1,000). Nuclei were stained blue with DAPI; G protein subunit alpha q was stained magenta with Alexa Fluor® 647. Images were taken using Leica stellaris 5. Protein abundance based on laser Intensity and smart gain: Medium. Scale bar: 20 µm.



Western blotting analysis using G protein subunit alpha q antibody (R020712). Total cell lysates (30 µg) from various cell lines were loaded and separated by SDS-PAGE. The blot was incubated with G protein subunit alpha q antibody (R020712, 1:5,000) and HRP-conjugated goat anti-rabbit secondary antibody (1:20,000) respectively. Image was developed using ECL Substrate Kit.



Western blotting analysis using G protein subunit alpha q antibody (R020712). G protein subunit alpha q expression in wild type (WT) and G protein subunit alpha q shRNA knockdown (KD) HeLa cells with 30 µg of total cell lysates. β-Tubulin serves as a loading control. The blot was incubated with G protein subunit alpha q antibody (R020712, 1:5,000) and HRP-conjugated goat anti-rabbit secondary antibody (1:20,000) respectively. Image was developed using ECL Substrate Kit.