

[KD Validated] Anti-CLTC Rabbit mAb

Purified Recombinant Rabbit Monoclonal Antibody

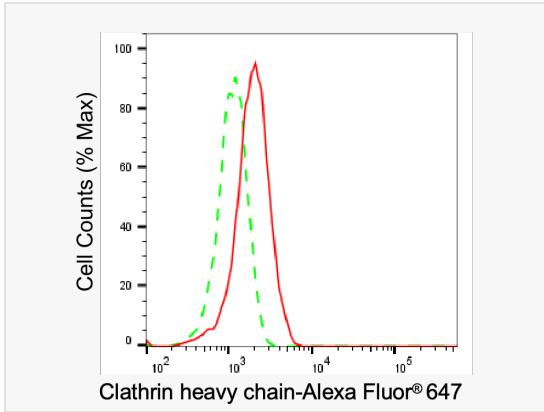
Catalog # R020688

Product Information

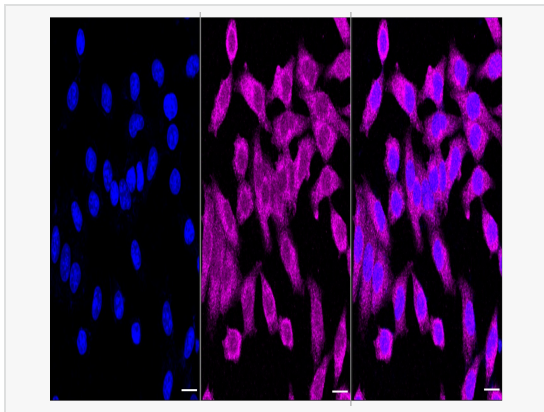
Application	WB, FC, IF (Cell)/ICC
Reactivity	Human, Mouse, Rat
Dilution	WB 1:1,000~1:5,000; FC 1:200~1:2,000; IF 1:100~1:1,000
Host	Rabbit
Clonality	Monoclonal
Clone No.	88B48T31
Isotype	IgG
Label	Unconjugated
Immunogen	A synthesized peptide derived from human Clathrin heavy chain
Format	Affinity purified monoclonal antibody supplied in PBS with 0.02% sodium azide and 50% glycerol, pH 7.3.
Storage	Shipped on wet ice. Store at -20°C. Stable for 12 months from date of receipt. Aliquoting is unnecessary for -20°C storage.
Precautions	[KD Validated] Anti-CLTC Rabbit mAb [88B48T31] is for research use only and not for use in diagnostic or therapeutic procedures.

Protein Information

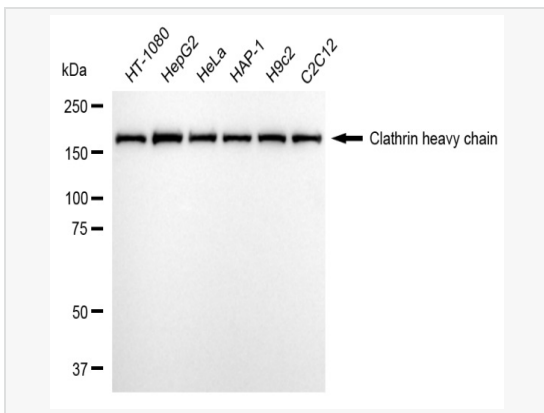
Synonyms	CLTC; Clathrin Heavy Chain; CLTCL; Hc; Clathrin Heavy Chain On Chromosome 17; Clathrin, Heavy Polypeptide-Like 2; Clathrin, Heavy Polypeptide (Hc); Clathrin Heavy Chain 1; CLH-17; Clathrin, Heavy Chain (Hc); Clathrin, Heavy Chain; KIAA0034; CHC17; MRD56; CLH17; CHC.
Calculated MW	Calculated MW: 192 kDa; Observed MW: 192 kDa
Uniprot ID	Q00610
Gene ID	1213
Background	Clathrin is the major protein of the polyhedral coat of coated pits and vesicles.



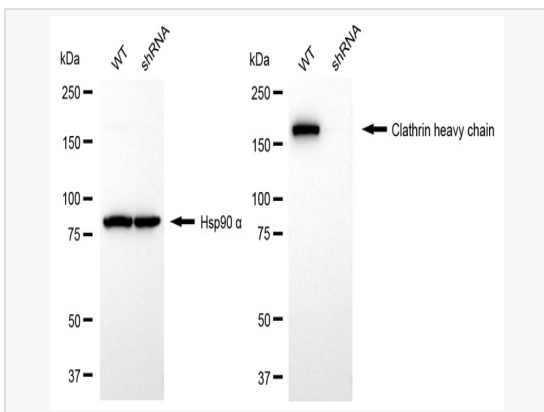
Flow cytometric analysis of Clathrin heavy chain expression in HepG2 cells using Clathrin heavy chain antibody (R020688, 1:2,000). Green, isotype control; red, Clathrin heavy chain.



Immunocytochemical staining of HepG2 cells with Clathrin heavy chain antibody (R020688, 1:1,000). Nuclei were stained blue with DAPI; Clathrin heavy chain was stained magenta with Alexa Fluor® 647. Images were taken using Leica stellaris 5. Protein abundance based on laser Intensity and smart gain: Medium. Scale bar, 20 μm.



Western blotting analysis using clathrin heavy chain antibody (R020688). Total cell lysates (30 μg) from various cell lines were loaded and separated by SDS-PAGE. The blot was incubated with clathrin heavy chain antibody (R020688, 1:5,000) and HRP-conjugated goat anti-rabbit secondary antibody (1:20,000) respectively. Image was developed using ECL Substrate Kit.



Western blotting analysis using clathrin heavy chain antibody (R020688). Clathrin heavy chain expression in wild-type (WT) and clathrin heavy chain (CLTC) shRNA knockdown (KD) HT-1080 cells with 20 μg of total cell lysates. Hsp90 α serves as a loading control. The blot was incubated with clathrin heavy chain antibody (R020688, 1:5,000) and HRP-conjugated goat anti-rabbit secondary antibody (1:20,000) respectively. Image was developed using ECL Substrate Kit.