

## [KD Validated] Anti-ATIC Mouse mAb

Purified Recombinant Rabbit Monoclonal Antibody

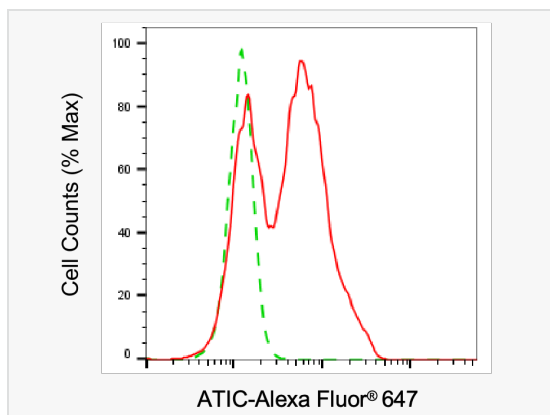
Catalog # M020687

### Product Information

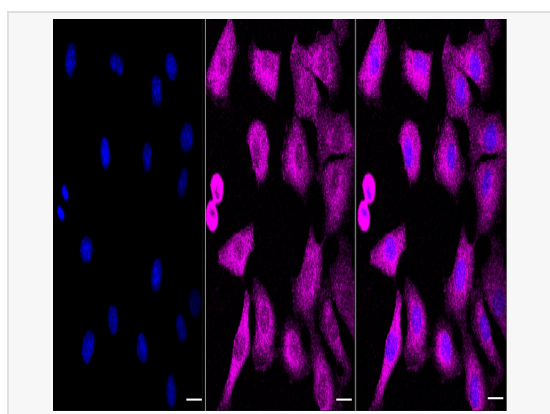
Application	WB, FC, IF (Cell)/ICC
Reactivity	Human, Mouse, Rat
Dilution	WB 1:1,000~1:5,000; FC 1:200~1:2,000; IF 1:100~1:1,000
Host	Mouse
Clonality	Monoclonal
Clone No.	76C67S93
Isotype	IgG
Label	Unconjugated
Immunogen	Recombinant protein of human ATIC
Format	Affinity purified monoclonal antibody supplied in PBS with 0.02% sodium azide and 50% glycerol, pH 7.3.
Storage	Shipped on wet ice. Store at -20°C. Stable for 12 months from date of receipt. Aliquoting is unnecessary for -20°C storage.
Precautions	[KD Validated] Anti-ATIC Mouse mAb [76C67S93] is for research use only and not for use in diagnostic or therapeutic procedures.

### Protein Information

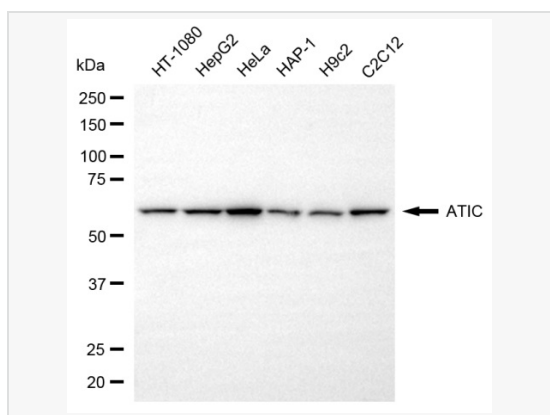
Synonyms	ATIC; 5-Aminoimidazole-4-Carboxamide Ribonucleotide Formyltransferase/IMP Cyclohydrolase; PURH; IMPCHASE; AICARFT; Phosphoribosylaminoimidazolecarboxamide Formyltransferase/IMP Cyclohydrolase; AICAR Transformylase/Inosine Monophosphate Cyclohydrolase; Bifunctional Purine Biosynthesis Protein ATIC; 5-Aminoimidazole-4-Carboxamide-1-Beta-D-Ribonucleotide Transformylase/Inosinicase; AICAR Formyltransferase/IMP Cyclohydrolase Bifunctional Enzyme; Epididymis Secretory Sperm Binding Protein Li 70p; Bifunctional Purine Biosynthesis Protein PURH; AICARFT/IMPCHASE; HEL-S-70p; AICAR.
Calculated MW	Calculated MW: 65 kDa; Observed MW: 65 kDa
Uniprot ID	P31939
Gene ID	471
Background	Bifunctional enzyme that catalyzes 2 steps in purine biosynthesis.



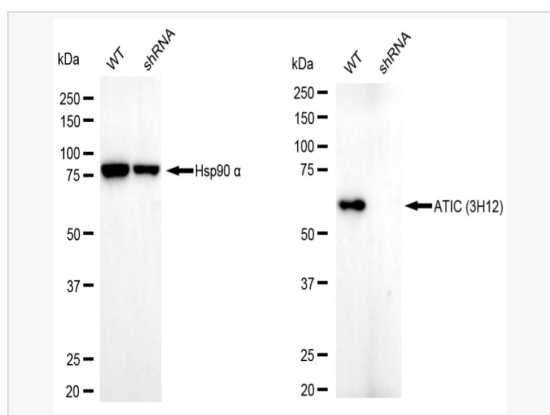
Flow cytometric analysis of ATIC expression in C2C12 cells using ATIC antibody (M020687, 1:2,000). Green, isotype control; red, ATIC.



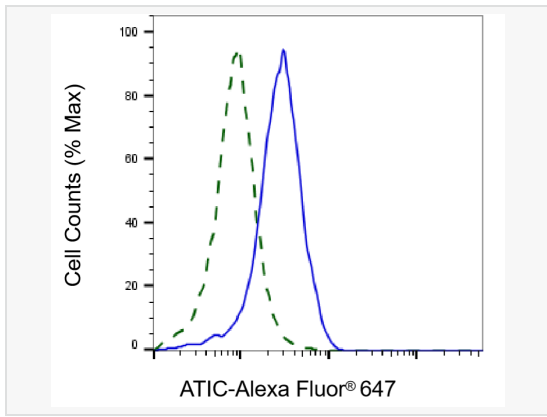
Immunocytochemical staining of C2C12 cells with ATIC associated protein antibody (M020687, 1:1,000). Nuclei were stained blue with DAPI; ATIC associated protein was stained magenta with Alexa Fluor® 647. Images were taken using Leica stellaris 5. Protein abundance based on laser Intensity and smart gain: Medium. Scale bar, 20 µm.



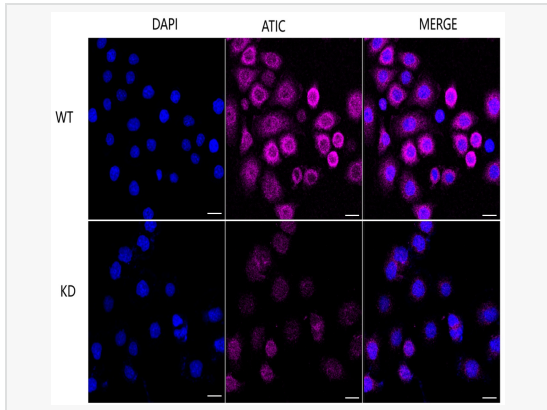
Western blotting analysis using ATIC antibody (M020687). Total cell lysates (30 µg) from various cell lines were loaded and separated by SDS-PAGE. The blot was incubated with ATIC antibody (M020687, 1:5,000) and HRP-conjugated goat anti-mouse secondary antibody (1:20,000) respectively. Image was developed using ECL Substrate Kit.



Western blotting analysis using ATIC antibody (M020687). ATIC expression in wild-type (WT) and ATIC shRNA knockdown (KD) HeLa cells with 20 µg of total cell lysates. Hsp90 α serves as a loading control. The blot was incubated with ATIC antibody (M020687, 1:5,000) and HRP-conjugated goat anti-mouse secondary antibody (1:20,000) respectively. Image was developed using ECL Substrate Kit.



Validation of ATIC knockdown using flow cytometry. Wild-type(WT, Blue) and knockdown(KD, Green) HeLa cells were stained with ATIC antibody (M020687, 1:2,000) and analyzed using BD flow cytometer.



Immunocytochemical staining of HeLa cells using ATIC antibody (M020687, 1:1,000). Top panel: wild-type (WT); Bottom panel: ATIC shRNA knockdown (KD). Nuclei were stained blue with DAPI; ATIC was stained magenta with Alexa Fluor® 647. Scale bar, 20  $\mu$ m. Permeabilization: Triton.