

[KD Validated] Anti-KAT2B Rabbit mAb

Purified Recombinant Rabbit Monoclonal Antibody

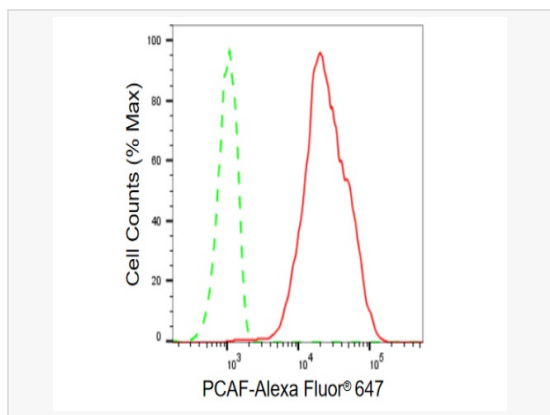
Catalog # R020622

Product Information

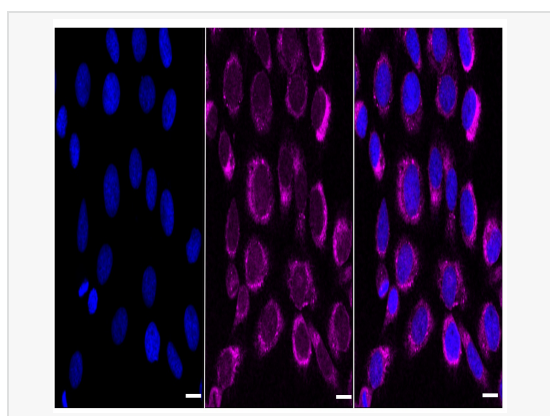
Application	WB, FC, IF (Cell)/ICC
Reactivity	Human
Dilution	WB 1:1,000~1:5,000; FC 1:200~1:2,000; IF 1:100~1:1,000
Host	Rabbit
Clonality	Monoclonal
Clone No.	72A07M30
Isotype	IgG
Label	Unconjugated
Immunogen	A synthesized peptide derived from human PCAF
Format	Affinity purified monoclonal antibody supplied in PBS with 0.02% sodium azide and 50% glycerol, pH 7.3.
Storage	Shipped on wet ice. Store at -20°C. Stable for 12 months from date of receipt. Aliquoting is unnecessary for -20°C storage.
Precautions	[KD Validated] Anti-KAT2B Rabbit mAb [72A07M30] is for research use only and not for use in diagnostic or therapeutic procedures.

Protein Information

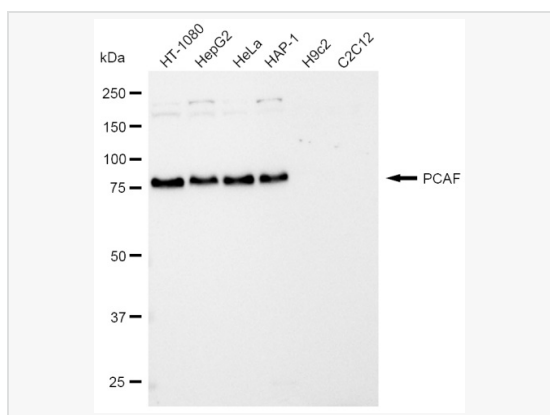
Synonyms	Lysine Acetyltransferase 2B; P/CAF; P300/CBP-Associated Factor; PCAF; Spermidine Acetyltransferase KAT2B; Histone Acetyltransferase KAT2B; K(Lysine) Acetyltransferase 2B; Histone Acetyltransferase PCAF; Histone Acetylase PCAF; EC 2.3.1.48; GCN5L; GCN5; CREBBP-Associated Factor; EC 2.3.1.57; CAF.
Calculated MW	Calculated MW: 93 kDa, Observed MW: 93 kDa
Uniprot ID	Q92831
Gene ID	8850
Background	CBP and p300 are large nuclear proteins that bind to many sequence-specific factors involved in cell growth and/or differentiation, including c-jun and the adenoviral oncoprotein E1A. The protein encoded by this gene associates with p300/CBP. It has in vitro and in vivo binding activity with CBP and p300, and competes with E1A for binding sites in p300/CBP. It has histone acetyl transferase activity with core histones and nucleosome core particles, indicating that this protein plays a direct role in transcriptional regulation.



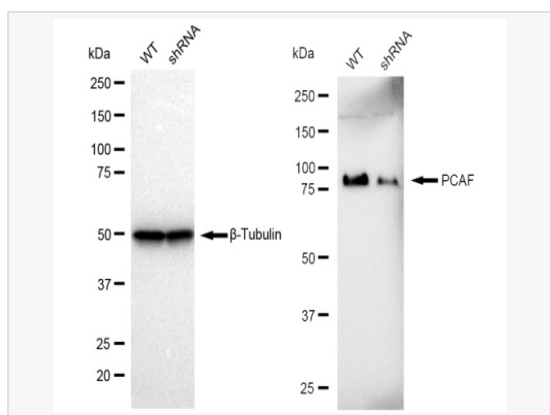
Flow cytometric analysis of PCAF expression in HT-1080 cells using PCAF antibody (R020622, 1:2,000). Green, isotype control; red, PCAF.



Immunocytochemical staining of HT-1080 cells with PCAF antibody (R020622, 1:1,000). Nuclei were stained blue with DAPI; PCAF was stained magenta with Alexa Fluor® 647. Images were taken using Leica stellaris 5. Protein abundance based on laser Intensity and smart gain: Medium. Scale bar: 20 µm.



Western blotting analysis using PCAF antibody (R020622). Total cell lysates (30 µg) from various cell lines were loaded and separated by SDS-PAGE. The blot was incubated with PCAF antibody (R020622, 1:5,000) and HRP-conjugated goat anti-rabbit secondary antibody (1:50,000) respectively. Image was developed using ECL Substrate Kit.



Western blotting analysis using PCAF antibody (R020622). PCAF expression in wild type (WT) and PCAF shRNA knockdown (KD) HT-1080 cells with 30 µg of total cell lysates. β-Tubulin serves as a loading control. The blot was incubated with PCAF antibody (R020622, 1:5,000) and HRP-conjugated goat anti-rabbit secondary antibody (1:20,000) respectively. Image was developed using ECL Substrate Kit.