

[KD Validated] Anti-ITGB1 Rabbit mAb

Purified Recombinant Rabbit Monoclonal Antibody

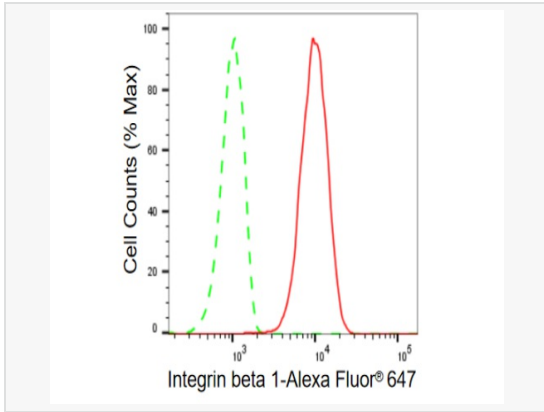
Catalog # R020617

Product Information

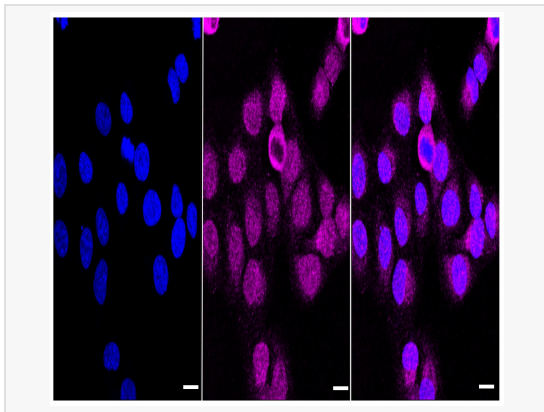
| | |
|-------------|---|
| Application | WB, FC, IF (Cell)/ICC |
| Reactivity | Human, Mouse, Rat |
| Dilution | WB 1:1,000~1:5,000; FC 1:200~1:2,000; IF 1:100~1:1,000 |
| Host | Rabbit |
| Clonality | Monoclonal |
| Clone No. | 72A37B80 |
| Isotype | IgG |
| Label | Unconjugated |
| Immunogen | A synthesized peptide derived from human Integrin beta 1 |
| Format | Affinity purified monoclonal antibody supplied in PBS with 0.02% sodium azide and 50% glycerol, pH 7.3. |
| Storage | Shipped on wet ice. Store at -20°C. Stable for 12 months from date of receipt. Aliquoting is unnecessary for -20°C storage. |
| Precautions | [KD Validated] Anti-ITGB1 Rabbit mAb [72A37B80] is for research use only and not for use in diagnostic or therapeutic procedures. |

Protein Information

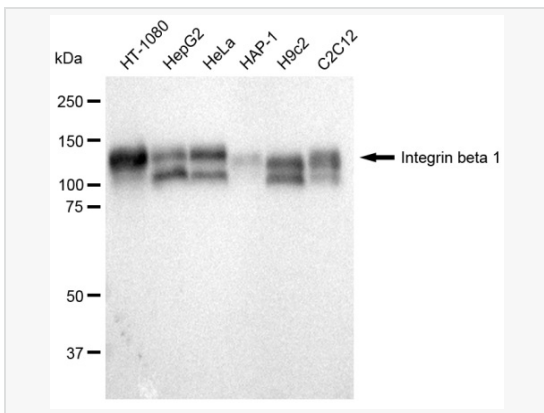
| | |
|---------------|--|
| Synonyms | Integrin Subunit Beta 1; GPIIA; MSK12; CD29; FNRR; MDF2; Integrin, Beta 1 (Fibronectin Receptor, Beta Polypeptide, Antigen CD29 Includes MDF2, MSK12); Glycoprotein IIa; Integrin Beta-1; Very Late Activation Protein, Beta Polypeptide; Fibronectin Receptor Subunit Beta; Integrin VLA-4 Beta Subunit; VLA-4 Subunit Beta; Integrin Beta 1; CD29 Antigen; VLA-BETA; VLAB. |
| Calculated MW | Calculated MW: 88 kDa, Observed MW: 130-150 kDa |
| Uniprot ID | P05556 |
| Gene ID | 3688 |
| Background | Integrins are α/β heterodimeric cell surface receptors that play a pivotal role in cell adhesion and migration, as well as in growth and survival. The integrin family contains at least 18 α and 8 β subunits that form 24 known integrins with distinct tissue distribution and overlapping ligand specificities. |



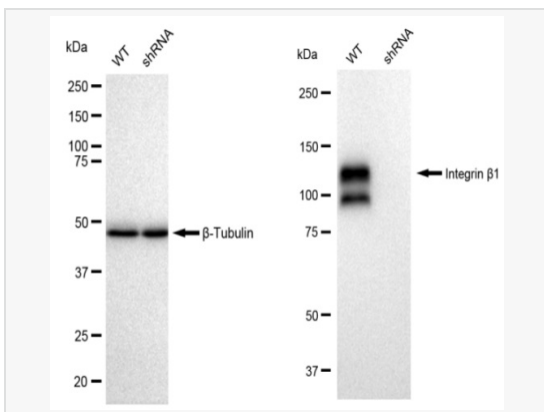
Flow cytometric analysis of Integrin beta 1 expression in HT-1080 cells using Integrin beta 1 antibody (R020617, 1:2,000). Green, isotype control; red, Integrin beta 1.



Immunocytochemical staining of HT-1080 cells with Integrin beta 1 antibody (R020617, 1:1,000). Nuclei were stained blue with DAPI; Integrin beta 1 was stained magenta with Alexa Fluor® 647. Images were taken using Leica stellaris 5. Protein abundance based on laser Intensity and smart gain: Low. Scale bar: 20 μ m.



Western blotting analysis using Integrin β 1 antibody (R020617). Total cell lysates (30 μ g) from various cell lines were loaded and separated by SDS-PAGE. The blot was incubated with Integrin β 1 antibody (R020617, 1:5,000) and HRP-conjugated goat anti rabbit secondary antibody (1:20,000) respectively. Image was developed using ECL Substrate Kit.



Western blotting analysis using Integrin beta 1 antibody (R020617). Integrin beta 1 expression in wild type (WT) and Integrin beta 1 shRNA knockdown (KD) HeLa cells with 30 μ g of total cell lysates. β -Tubulin serves as a loading control. The blot was incubated with Integrin beta 1 antibody (R020617, 1:5,000) and HRP-conjugated goat anti rabbit secondary antibody (1:50,000) respectively. Image was developed using ECL Substrate Kit.