

[KD Validated] Anti-NEDD4 Rabbit mAb

Purified Recombinant Rabbit Monoclonal Antibody

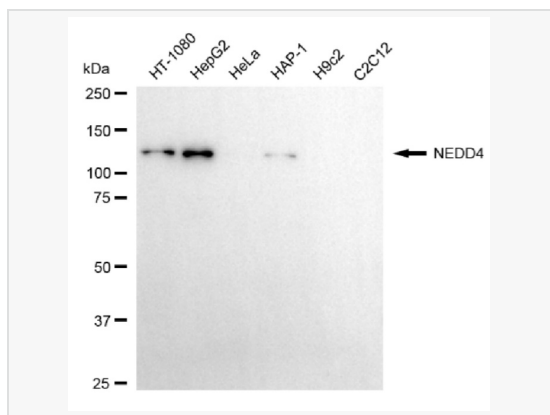
Catalog # R020573

Product Information

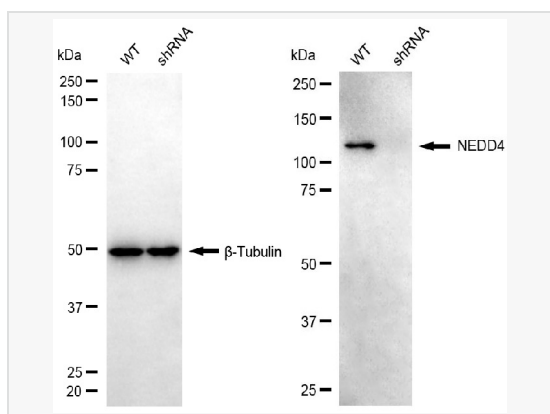
Application	WB
Reactivity	Human
Dilution	WB 1:500~1:2,500
Host	Rabbit
Clonality	Monoclonal
Clone No.	66F85A89
Isotype	IgG
Label	Unconjugated
Immunogen	Recombinant protein of human NEDD4
Format	Affinity purified monoclonal antibody supplied in PBS with 0.02% sodium azide and 50% glycerol, pH 7.3.
Storage	Shipped on wet ice. Store at -20°C. Stable for 12 months from date of receipt. Aliquoting is unnecessary for -20°C storage.
Precautions	[KD Validated] Anti-NEDD4 Rabbit mAb [66F85A89] is for research use only and not for use in diagnostic or therapeutic procedures.

Protein Information

Synonyms	NEDD4; NEDD4 E3 Ubiquitin Protein Ligase; NEDD4-1; RPF1; KIAA0093; Neural Precursor Cell Expressed, Developmentally Down-Regulated 4, E3 Ubiquitin Protein Ligase; Cell Proliferation-Inducing Gene 53 Protein; HECT-Type E3 Ubiquitin Transferase NEDD4; E3 Ubiquitin-Protein Ligase NEDD4; Receptor-Potentiating Factor 1; MGC176705; Neural Precursor Cell Expressed Developmentally Down-Regulated Protein 4; Neural Precursor Cell Expressed, Developmentally Down-Regulated 4; EC 2.3.2.26; EC 6.3.2; NEDD-4.
Calculated MW	Calculated MW: 149 kDa; Observed MW: 130 kDa
Uniprot ID	P46934
Gene ID	4734
Background	E3 ubiquitin-protein ligase which accepts ubiquitin from an E2 ubiquitin-conjugating enzyme in the form of a thioester and then directly transfers the ubiquitin to targeted substrates. Involved in the pathway leading to the degradation of VEGFR-2/KDFR, independently of its ubiquitin-ligase activity.
Cellular Location	Cytoplasm. Cell membrane. Recruited to the plasma membrane by GRB10. Once complexed with GRB10 and IGF1R, follows IGF1R internalization, remaining associated with early endosomes. Uncouples from IGF1R-containing endosomes before the sorting of the receptor to the lysosomal compartment (By similarity). May be recruited to exosomes by NDFIP1.



Western blotting analysis using NEDD4 antibody (R020573). Total cell lysates (30 μ g) from various cell lines were loaded and separated by SDS-PAGE. The blot was incubated with NEDD4 antibody (R020573, 1:2,500) and HRP-conjugated goat mouse secondary antibody (1:20,000) respectively. Image was developed using ECL Substrate Kit.



Western blotting analysis using NEDD4 antibody (R020573). NEDD4 expression in wild-type (WT) and NEDD4 shRNA knockdown (KD) HeLa cells with 20 μ g of total cell lysates. β -Tubulin serves as a loading control. The blot was incubated with NEDD4 antibody (R020573, 1:2,500) and HRP-conjugated goat anti-mouse secondary antibody (1:20,000) respectively. Image was developed using ECL Substrate Kit.