

[KD Validated] Anti-GRK2 Rabbit pAb

Purified Rabbit Polyclonal Antibody

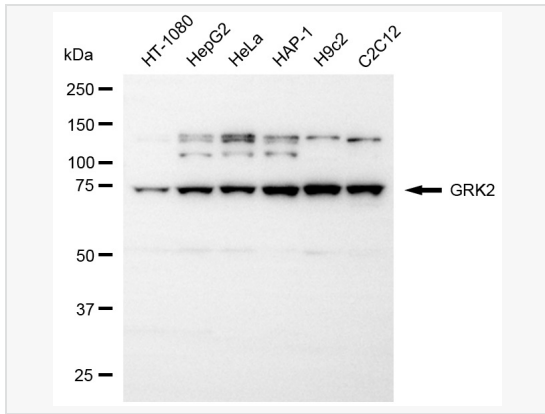
Catalog # P020556

Product Information

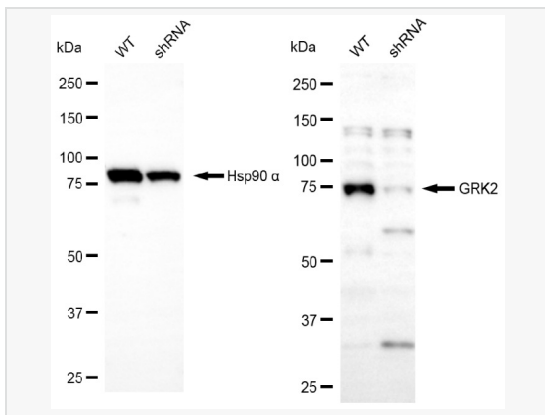
| | |
|-------------|---|
| Application | WB |
| Reactivity | Human, Mouse, Rat |
| Dilution | WB 1:1,000~1:5,000 |
| Host | Rabbit |
| Clonality | Polyclonal |
| Isotype | IgG |
| Label | Unconjugated |
| Immunogen | A synthesized peptide derived from human GRK2 |
| Format | Affinity purified polyclonal antibody supplied in PBS with 0.02% sodium azide and 50% glycerol, pH 7.3. |
| Storage | Shipped on wet ice. Store at -20°C. Stable for 12 months from date of receipt. Aliquoting is unnecessary for -20°C storage. |
| Precautions | [KD Validated] Anti-GRK2 Rabbit pAb is for research use only and not for use in diagnostic or therapeutic procedures. |

Protein Information

| | |
|-----------------|---|
| Synonyms | GRK2; G Protein-Coupled Receptor Kinase 2; BARK1; ADRBK1; Beta-Adrenergic Receptor Kinase 1; EC 2.7.11.15; Beta-ARK-1; Adrenergic, Beta, Receptor Kinase 1; G-Protein Coupled Receptor Kinase 2; Adrenergic Beta Receptor Kinase 1; BETA-ARK1; EC 2.7.11.47; BARK. |
| Calculated MW | Calculated MW: 80 kDa; Observed MW: 75 kDa |
| Uniprot ID | P25098 |
| Gene ID | 156 |
| Background | This gene encodes a member of the G protein-coupled receptor kinase family of proteins. The encoded protein phosphorylates the beta-adrenergic receptor as well as a wide range of other substrates including non-GPCR cell surface receptors, and cytoskeletal, mitochondrial, and transcription factor proteins. Data from rodent models supports a role for this gene in embryonic development, heart function and metabolism. Elevated expression of this gene has been observed in human patients with heart failure and Alzheimer's disease. [provided by RefSeq, Sep 2017] |
| Tissue Location | Expressed in peripheral blood leukocytes. |



Western blotting analysis using GRK2 antibody (P020556). Total cell lysates (30 μ g) from various cell lines were loaded and separated by SDS-PAGE. The blot was incubated with GRK2 antibody (P020556, 1:5,000) and HRP-conjugated goat anti-rabbit secondary antibody (1:20,000) respectively. Image was developed using ECL Substrate Kit.



Western blotting analysis using GRK2 antibody (P020556). GRK2 expression in wild-type (WT) and GRK2 shRNA knockdown (KD) HeLa cells with 20 μ g of total cell lysates. Hsp90 α serves as a loading control. The blot was incubated with GRK2 antibody (P020556, 1:5,000) and HRP-conjugated goat anti-rabbit secondary antibody (1:20,000) respectively. Image was developed using ECL Substrate Kit.