

[KD Validated] Anti-CCNB1 Rabbit pAb

Purified Rabbit Polyclonal Antibody

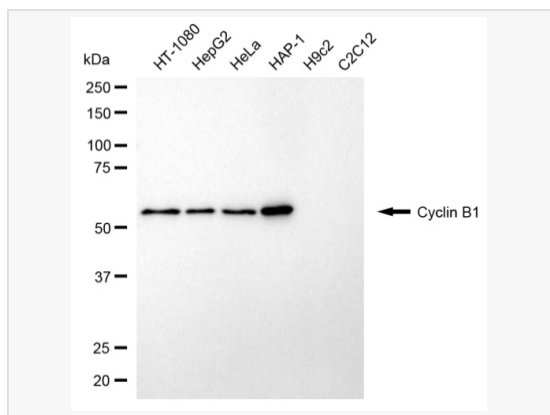
Catalog # P020552

Product Information

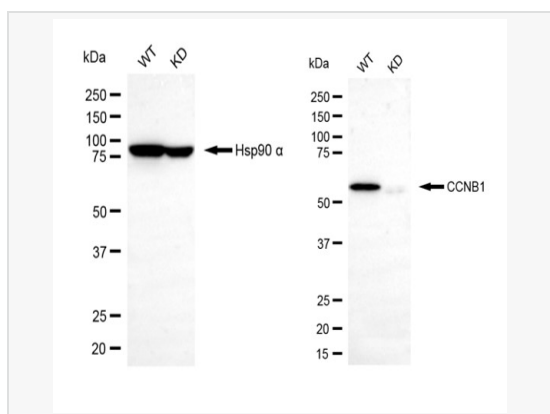
Application	WB
Reactivity	Human
Dilution	WB 1:500~1:2,500
Host	Rabbit
Clonality	Polyclonal
Isotype	IgG
Label	Unconjugated
Immunogen	A synthesized peptide derived from human Cyclin B1
Format	Affinity purified polyclonal antibody supplied in PBS with 0.02% sodium azide and 50% glycerol, pH 7.3.
Storage	Shipped on wet ice. Store at -20°C. Stable for 12 months from date of receipt. Aliquoting is unnecessary for -20°C storage.
Precautions	[KD Validated] Anti-CCNB1 Rabbit pAb is for research use only and not for use in diagnostic or therapeutic procedures.

Protein Information

Synonyms	CCNB1; Cyclin B1; CCNB; G2/Mitotic-Specific Cyclin-B1; G2/Mitotic-Specific Cyclin B1.
Calculated MW	Calculated MW: 48 kDa; Observed MW: 58 kDa
Uniprot ID	P14635
Gene ID	891
Background	Essential for the control of the cell cycle at the G2/M (mitosis) transition. a member of the highly conserved cyclin family, whose members are characterized by a dramatic periodicity in protein abundance through the cell cycle. Cyclins function as regulators of CDK kinases.



Western blotting analysis using cyclin B1 antibody (P020552). Total cell lysates (30 μ g) from various cell lines were loaded and separated by SDS-PAGE. The blot was incubated with cyclin B1 antibody (P020552, 1:2,500) and HRP-conjugated goat anti-rabbit secondary antibody (1:20,000) respectively. Image was developed using ECL Substrate Kit.



Western blotting analysis using cyclin B1 antibody (P020552). Cyclin B1 expression in wild-type (WT) and cyclin B1 (CCNB1) knockdown (KD) HeLa cells with 20 μ g of total cell lysates. Hsp90 α serves as a loading control. The blot was incubated with cyclin B1 antibody (P020552, 1:2,500) and HRP-conjugated goat anti-rabbit secondary antibody (1:20,000) respectively. Image was developed using ECL Substrate Kit.