

[KD Validated] Anti-PXN Rabbit pAb

Purified Rabbit Polyclonal Antibody

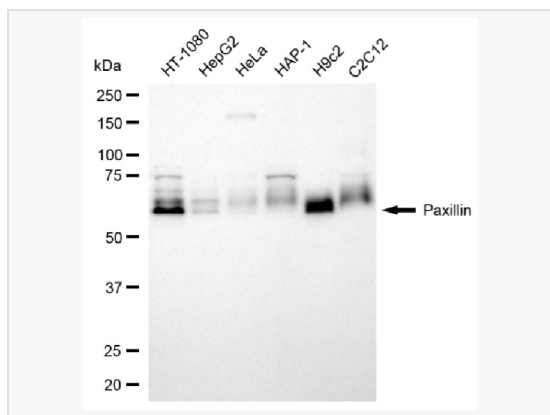
Catalog # P020540

Product Information

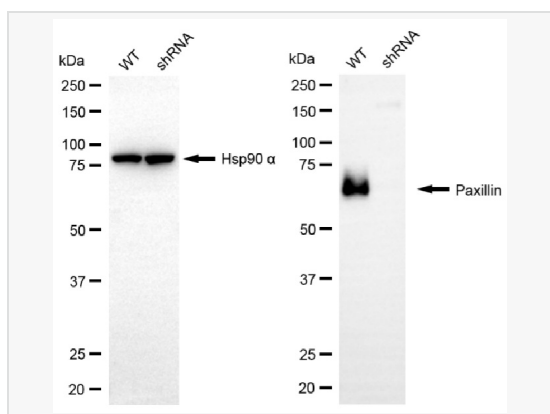
Application	WB
Reactivity	Human, Mouse, Rat
Dilution	WB 1:500~1:2,500
Host	Rabbit
Clonality	Polyclonal
Isotype	IgG
Label	Unconjugated
Immunogen	A synthesized peptide derived from human Paxillin
Format	Affinity purified polyclonal antibody supplied in PBS with 0.02% sodium azide and 50% glycerol, pH 7.3.
Storage	Shipped on wet ice. Store at -20°C. Stable for 12 months from date of receipt. Aliquoting is unnecessary for -20°C storage.
Precautions	[KD Validated] Anti-PXN Rabbit pAb is for research use only and not for use in diagnostic or therapeutic procedures.

Protein Information

Synonyms	PXN; Paxillin; Testicular Tissue Protein Li 134.
Calculated MW	Calculated MW: 65 kDa; Observed MW: 68 kDa
Uniprot ID	P49023
Gene ID	5829
Background	Cytoskeletal protein involved in actin-membrane attachment at sites of cell adhesion to the extracellular matrix (focal adhesion). PXN is a multi-domain cytoskeletal protein that localizes primarily to focal adhesion sites to the extracellular matrix. Phosphorylated by focal adhesion kinase (FAK) and is a component of integrin signaling. Its phosphorylation provides docking sites for recruitment of signaling molecules to focal adhesions.



Western blotting analysis using paxillin antibody (P020540). Total cell lysates (30 μ g) from various cell lines were loaded and separated by SDS-PAGE. The blot was incubated with paxillin antibody (P020540, 1:2,500) and HRP-conjugated goat anti-rabbit secondary antibody (1:20,000) respectively. Image was developed using ECL Substrate Kit.



Western blotting analysis using paxillin antibody (P020540). Paxillin expression in wild-type (WT) and paxillin (PXN) shRNA knockdown (KD) HeLa cells with 20 μ g of total cell lysates. Hsp90 α serves as a loading control. The blot was incubated with paxillin antibody (P020540, 1:2,500) and HRP-conjugated goat anti-rabbit secondary antibody (1:20,000) respectively. Image was developed using ECL Substrate Kit.