

[KD Validated] Anti-CTBP2 Rabbit pAb

Purified Rabbit Polyclonal Antibody

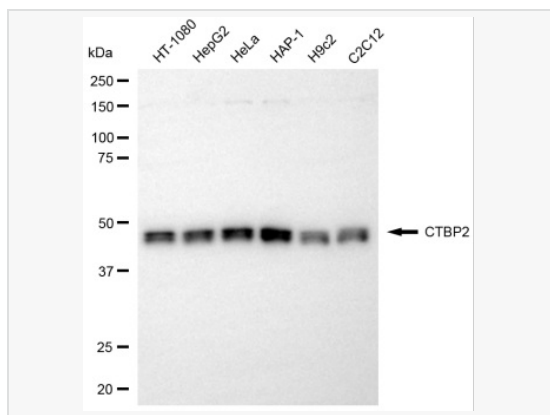
Catalog # P020526

Product Information

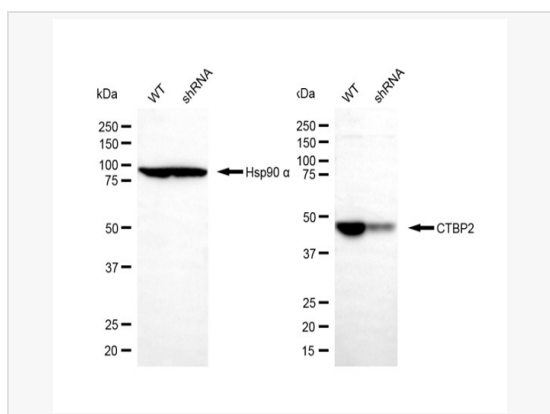
Application	WB
Reactivity	Human, Mouse, Rat
Dilution	WB 1:500~1:2,500
Host	Rabbit
Clonality	Polyclonal
Isotype	IgG
Label	Unconjugated
Immunogen	A synthesized peptide derived from human CTBP2
Format	Affinity purified polyclonal antibody supplied in PBS with 0.02% sodium azide and 50% glycerol, pH 7.3.
Storage	Shipped on wet ice. Store at -20°C. Stable for 12 months from date of receipt. Aliquoting is unnecessary for -20°C storage.
Precautions	[KD Validated] Anti-CTBP2 Rabbit pAb is for research use only and not for use in diagnostic or therapeutic procedures.

Protein Information

Synonyms	CTBP2; C-Terminal Binding Protein 2; Ribeye; C-Terminal-Binding Protein 2; CtBP2.
Calculated MW	Calculated MW: 49 kDa; Observed MW: 48 kDa
Uniprot ID	P56545
Gene ID	1488
Background	This gene produces alternative transcripts encoding two distinct proteins. One protein is a transcriptional repressor, while the other isoform is a major component of specialized synapses known as synaptic ribbons. Both proteins contain a NAD ⁺ binding domain similar to NAD ⁺ -dependent 2-hydroxyacid dehydrogenases. A portion of the 3' untranslated region was used to map this gene to chromosome 21q21.3; however, it was noted that similar loci elsewhere in the genome are likely. Blast analysis shows that this gene is present on chromosome 10. Several transcript variants encoding two different isoforms have been found for this gene. [provided by RefSeq, Feb 2014]
Cellular Location	Nucleus. Cell junction > synapse.
Tissue Location	Ubiquitous. Highest levels in heart, skeletal muscle, and pancreas.



Western blotting analysis using CTBP2 antibody (P020526). Total cell lysates (10 μ g) from various cell lines were loaded and separated by SDS-PAGE. The blot was incubated with CTBP2 antibody (P020526, 1:2,500) and HRP-conjugated goat anti-rabbit secondary antibody (1:20,000) respectively. Image was developed using ECL Substrate Kit.



Western blotting analysis using CTBP2 antibody (P020526). CTBP2 expression in wild-type (WT) and CTBP2 shRNA knockdown (KD) HT-1080 cells with 20 μ g of total cell lysates. Hsp90 α serves as a loading control. The blot was incubated with CTBP2 antibody (P020526, 1:2,500) and HRP-conjugated goat anti-rabbit secondary antibody (1:20,000) respectively. Image was developed using ECL Substrate Kit.